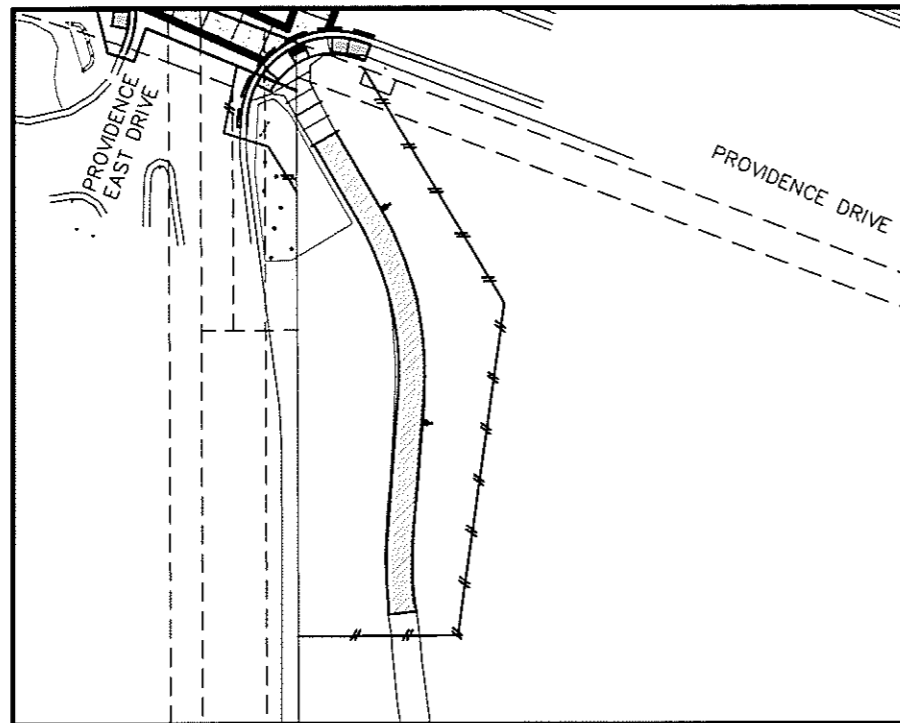




**MUNICIPALITY OF ANCHORAGE  
PROJECT MANAGEMENT &  
ENGINEERING DEPARTMENT**

**UMED TRANSIT AND  
PEDESTRIAN IMPROVEMENTS  
PROJECT NUMBER 04-42  
SCHEDULE I**

**JUN 2007  
95% DESIGN**

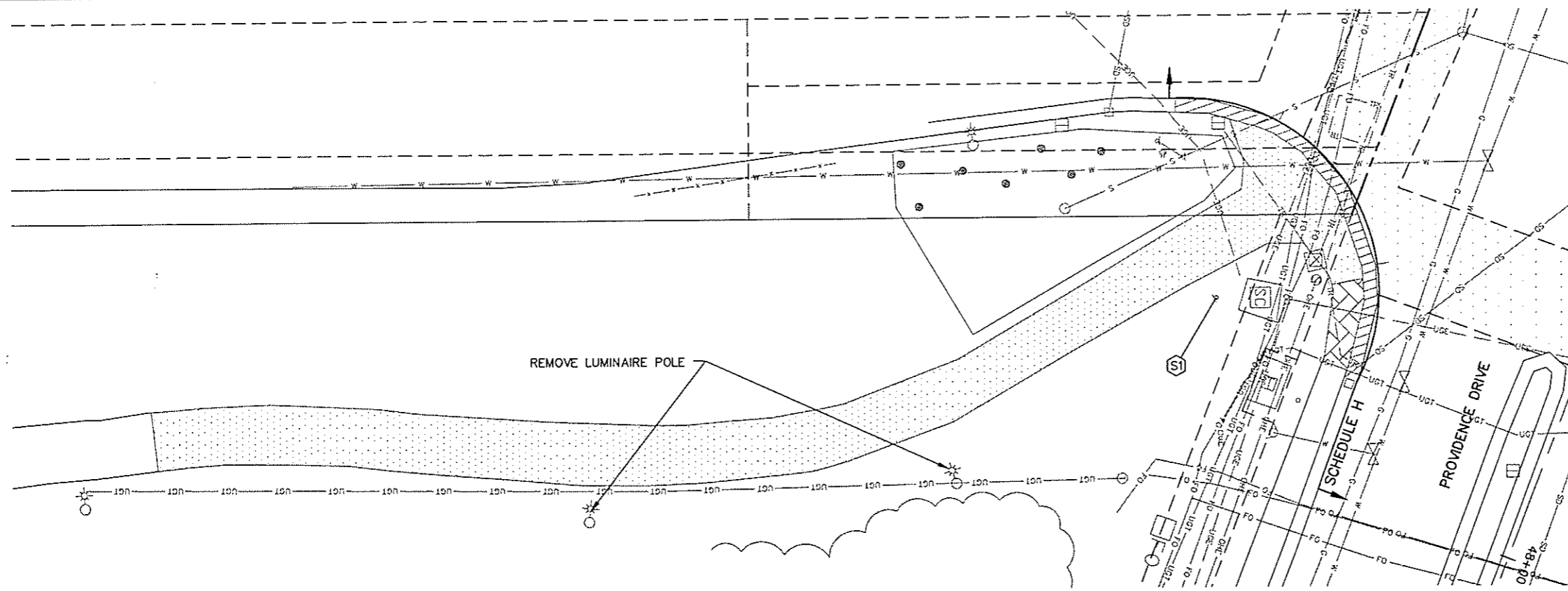
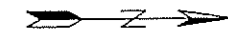


**PROJECT AREA  
THIS SCHEDULE**



GRAPHIC SCALE

**VERIFY SCALES**  
BAR IS ONE-HALF INCH  
ON ORIGINAL DRAWING  
0 1/2"  
IF NOT ONE HALF INCH  
ON THIS SHEET, ADJUST  
SCALES ACCORDINGLY.



**DEMOLITION NOTES:**

1. SEE CIVIL SHEETS FOR SIGN SUMMARY.
2. SEE CIVIL SHEETS FOR SAWCUT LIMITS.
3. DELIVER ALL EXISTING TRANSIT EQUIPMENT REMOVED TO 3650 D E. TUDOR ROAD. CONTACT ALTON STAFF (343-8230) OR RANDY BERGT (343-8285) 48 HOURS BEFORE DELIVERY.

**LEGEND**

- REMOVE EXISTING PAVEMENT
- REMOVE EXISTING CURB & GUTTER
- REMOVE EXISTING SIDEWALK OR CONCRETE APRON
- SAWCUT LINE

File: I:\07 UMED\00 CAD\Drawings\10107 0510 Sheet.dwg

GRAPHIC SCALE 1" = 10'

FIELD BOOKS	TBM NO.	LOCATION	ELEV.	DATA	DRAWN BY	CHECKED BY	DATA	DRAWN BY	CHECKED BY	REV	DATE	DESCRIPTION	BY	REV	DATE	DESCRIPTION	BY	
DESIGN				BASE			TELEPHONE											
STAKING				TOPOGRAPHY			ELECTRIC											
ASBUILT				PROFILE			DESIGN											
CONTRACTOR				SANITARY SEWER			QUANTITIES											
INSPECTOR				STORM SEWER			PRELIMINARY											
				WATER			FINAL											
				GAS			MUNICIPAL/STATE											

**CRW ENGINEERING GROUP LLC**  
 3640 ARCTIC BLVD. SUITE 300  
 ANCHORAGE, ALASKA 99503  
 PHONE: (907) 565-3353  
 FAX: (907) 561-2273

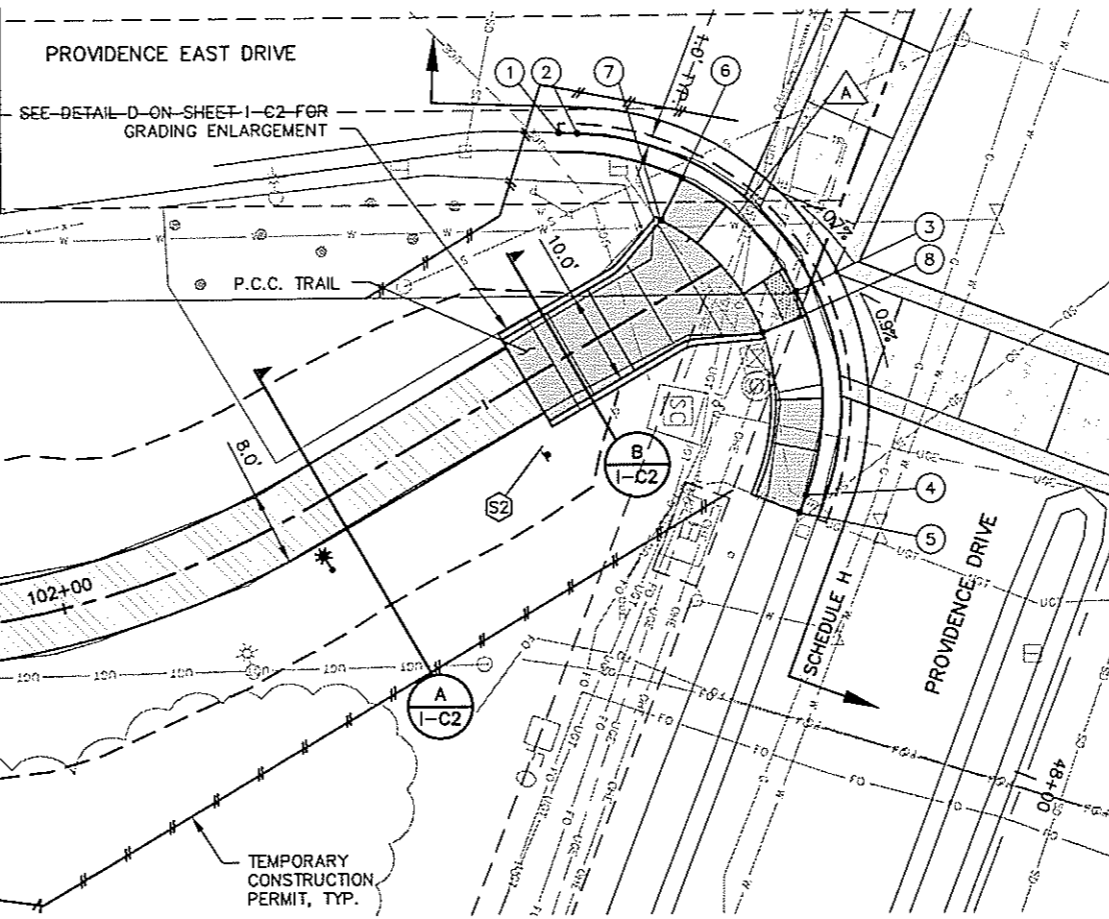
STATE OF ALASKA  
 4924  
 William J. Johnson  
 CE 9698  
 REGISTERED PROFESSIONAL ENGINEER



PROJECT MANAGEMENT AND ENGINEERING DEPARTMENT  
 OFFICE OF THE MUNICIPAL ENGINEER  
 PM&E Project No. 04-42 DEMOLITION SCHED 1  
**UMED TRANSIT AND PEDESTRIAN IMPROVEMENTS**  
 PROVIDENCE DRIVE & ALUMNI DRIVE - TRAIL  
 HOR. 1"=10' DATE JUN 2007 GRID: 1633,1634,1635  
 VER. N/A STATUS 95% DESIGN SHEET I-D1 of XX

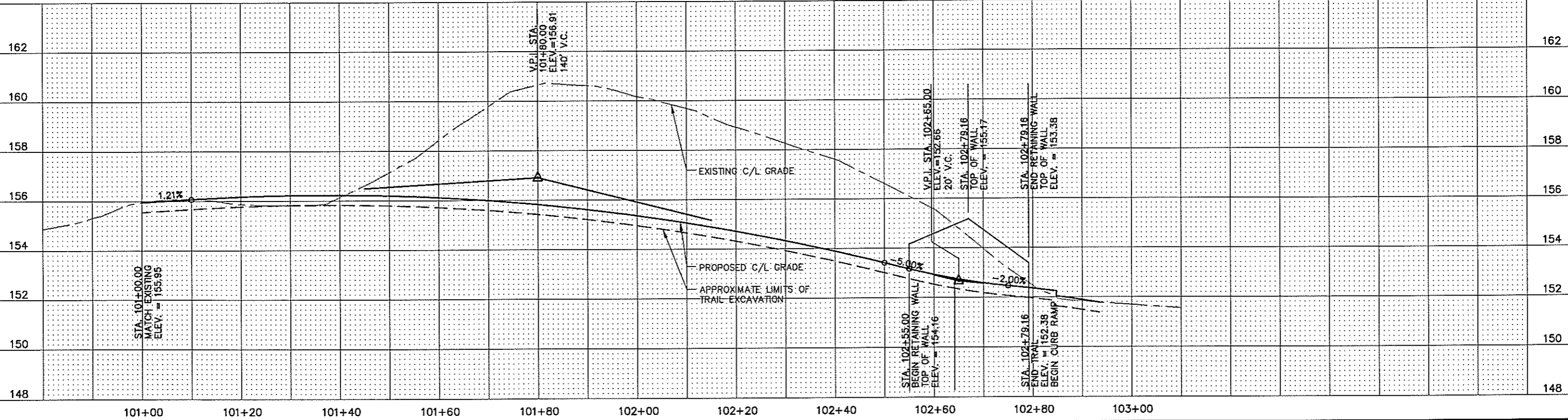
# SIGN SUMMARY											
SHEET	SIGN NO.	STATION	OFFSET (FT)	TYPE	LEGEND	SIZE INCHES			SIGN FACES	POST TYPE	REMARKS
						W	H	SF			
I-D1	S1	47+79.04	54.63 R	D11-1	BIKE ROUTE	-	-	-	SE	-	SALVAGE, SEE NOTE 3
					END	-	-	-			
I-C1	S2	47+85.94	59.82 R	D11-1	BIKE ROUTE	24	18	3.00	SE	TELSPAR	
					END	24	6	1.00			
					SIGN AREA			4.00			

- NOTES:
- SIGN STATIONS AND OFFSETS ARE APPROXIMATE.
  - CONTRACTOR SHALL VERIFY SIGN LOCATIONS WITH THE ENGINEER PRIOR TO INSTALLATION.
  - SALVAGE AND DELIVER ALL MUNICIPAL SIGNS TO THE MUNICIPAL TRAFFIC SIGN SHOP, 2839 MOUNTAIN VIEW DRIVE, 343-4384.



△ CURVE DATA			
CURVE	RADIUS (FT)	LENGTH (FT)	DESCRIPTION
A			TO BE COMPLETED FOR FINAL DESIGN
B			
C			

# DESIGN DATA				
POINT	STATION	OFFSET (FEET)	ELEVATION (FEET)	REMARK
1				
2				
3				
4				
5				
6				
7				
8				
9				
10				
11				
12				



File: 10107 UMED.00 CAD\Drawings\10107 c Sheets.dwg

FIELD BOOKS	ITEM NO.	LOCATION	ELEV.	DATA	DATE	DESCRIPTION	BY	REV	DATE	DESCRIPTION	BY
DESIGN				BASE		TELEPHONE					
STAGING				TOPOGRAPHY		ELECTRIC					
ASBUILT				PROFILE		DESIGN					
CONTRACTOR				SANITARY SEWER		QUANTITIES					
INSPECTOR				STORM SEWER		PRELIMINARY					
				WATER		FINAL					
				GAS		MUNICIPAL/STATE					

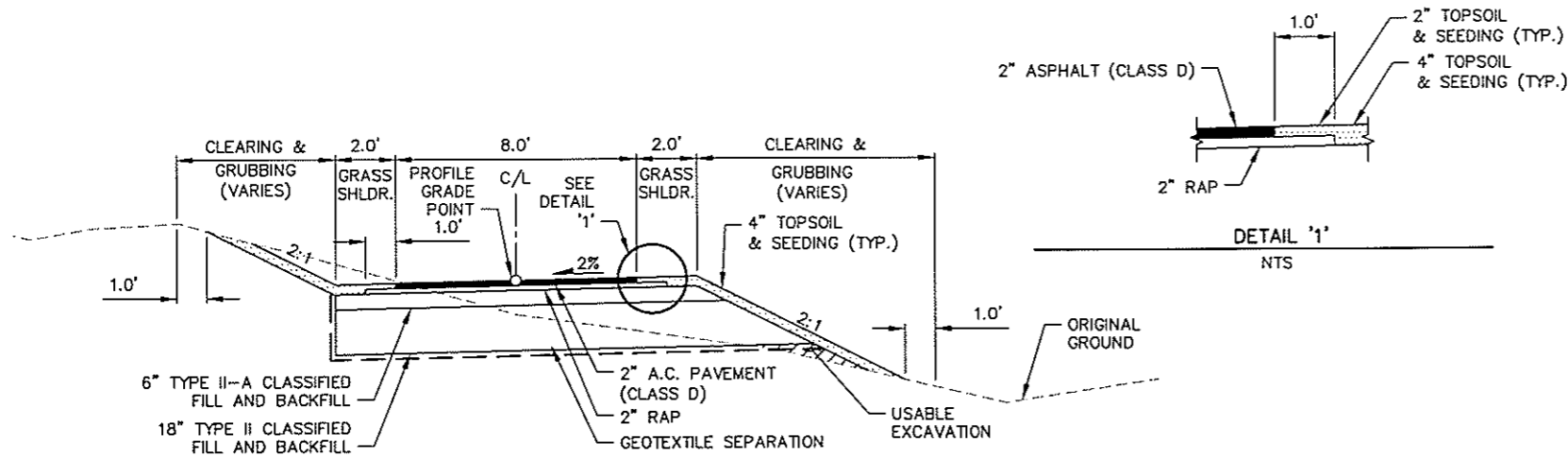
**CRW ENGINEERING GROUP, LLC**  
 3840 ARCTIC BLVD, SUITE 300  
 ANCHORAGE, ALASKA 99503  
 PHONE: (907) 542-3353  
 FAX: (907) 541-2273



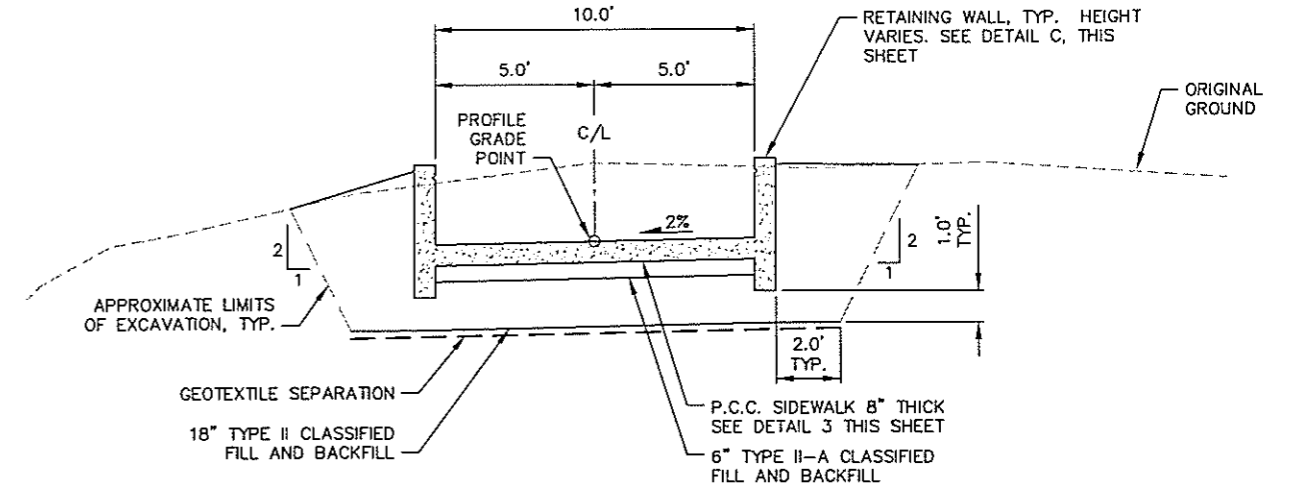
PROJECT MANAGEMENT AND ENGINEERING DEPARTMENT  
 OFFICE OF THE MUNICIPAL ENGINEER  
 PM&E Project No. 04-42 CIVIL SCHED 1

**UMED TRANSIT AND PEDESTRIAN IMPROVEMENTS**  
 PROVIDENCE DRIVE & ALUMNI DRIVE TRAIL  
 PLAN & PROFILE

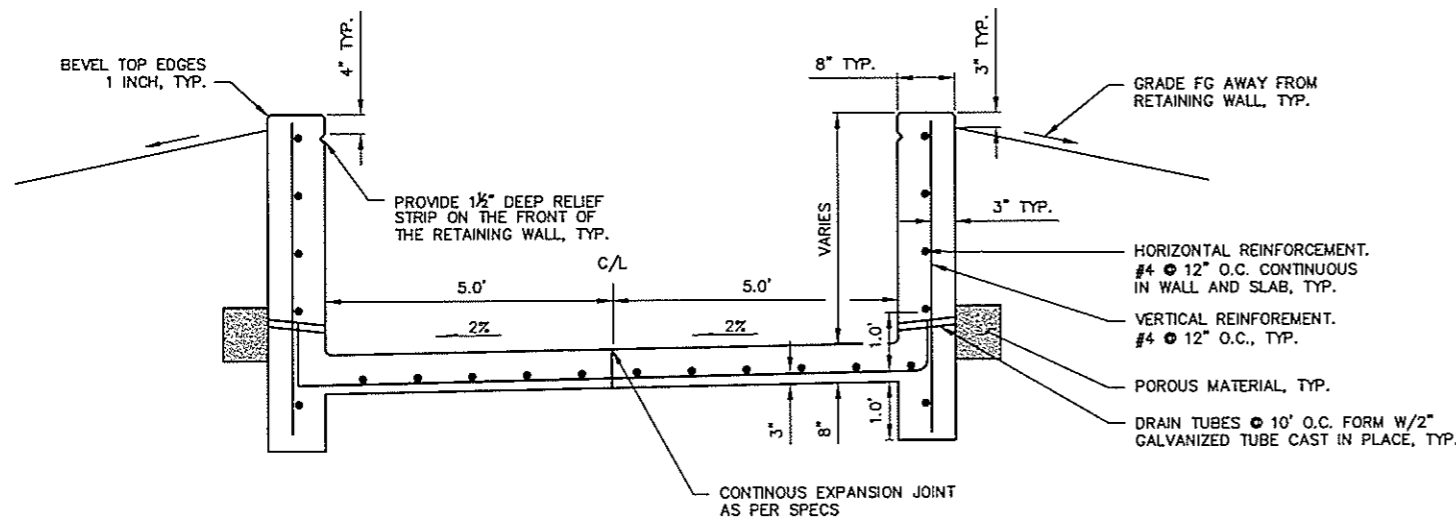
SCALE: HOR. 1"=10' DATE JUN 2007 SHEET I-C1 of XX  
 VER. 1"=2' STATUS 95% DESIGN



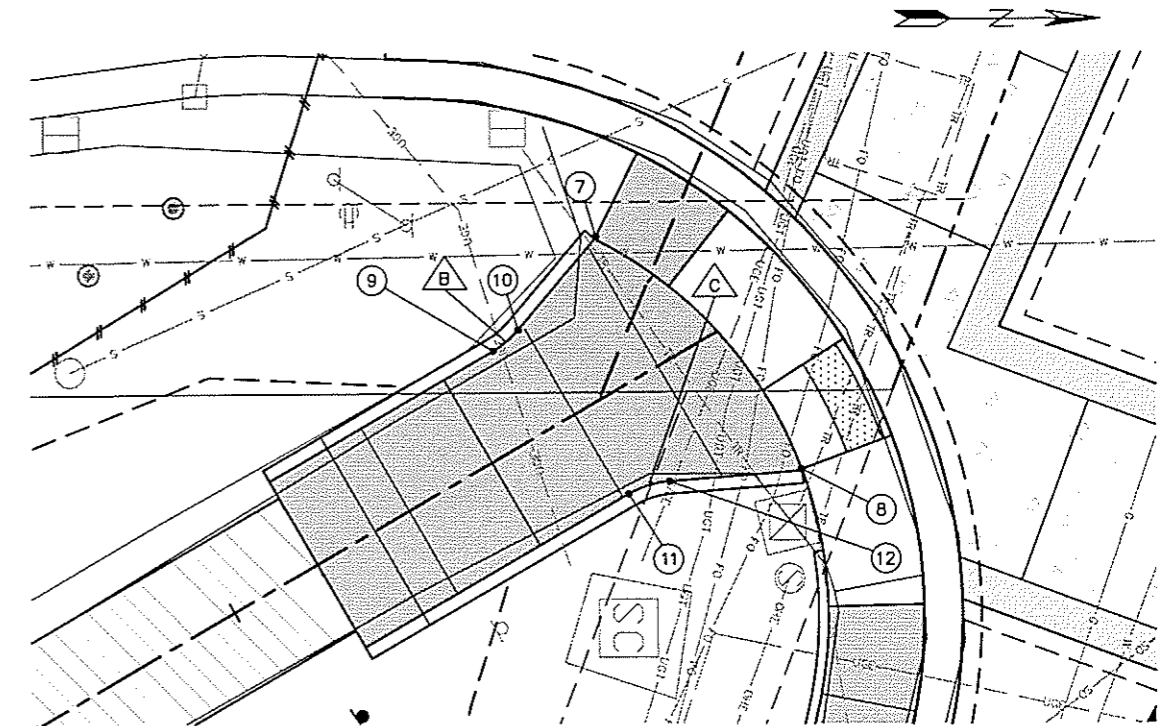
**A** TYPICAL TRAIL SECTION - A.C. PAVEMENT  
I-C2 STA. 101+00.00 TO STA. 102+55.00



**B** TYPICAL TRAIL SECTION - CONCRETE  
I-C2 STA. 102+55.00 TO STA. 102+79.16



**C** P.C.C. RETAINING WALL  
I-C2



NOTES:

- SEE SHEET I-C1 FOR CURVE DATA AND DESIGN DATA.

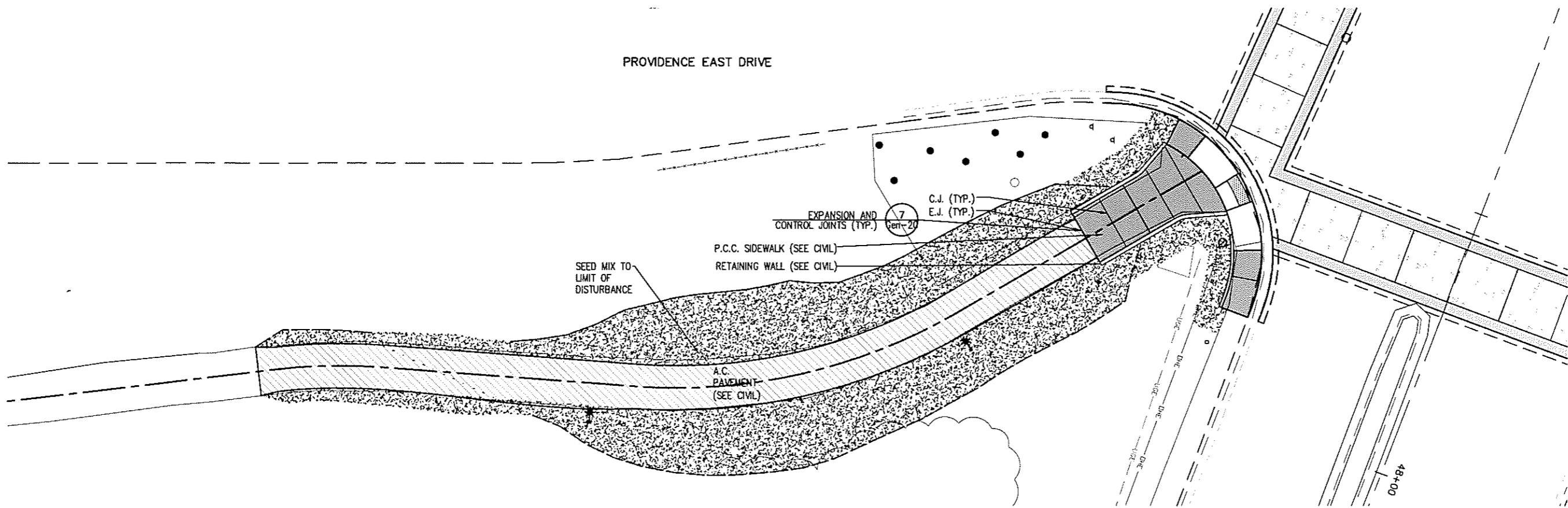
**D** RETAINING WALL - DETAIL  
I-C2 NTS

File: 10107 UMED\00 CAD\Drawings\10107 C Sheets.dwg

FIELD BOOKS	TEAM NO.	LOCATION	ELEV.	DATA	DRAWN BY	CHECKED BY	DATA	DRAWN BY	CHECKED BY	REV	DATE	DESCRIPTION	BY	REV	DATE	DESCRIPTION	BY	
DESIGN				BASE			TELEPHONE											
STAGING				TOPOGRAPHY			ELECTRIC											
ASBUILT				PROFILE			DESIGN											
CONTRACTOR				SANITARY SENSOR			QUANTITIES											
INSPECTOR				STORM SENSOR			PRELIMINARY											
				WATER			FINAL											
				GAS			MUNICIPAL/STATE											

<p>3040 ARCTIC BLVD. SUITE 300 ANCHORAGE, ALASKA 99503 PHONE: (907) 562-3323 FAX: (907) 561-2273</p>			PROJECT MANAGEMENT AND ENGINEERING DEPARTMENT OFFICE OF THE MUNICIPAL ENGINEER
			PM&E Project No. 04-42 CIVIL SCHED 1
<b>UMED TRANSIT AND PEDESTRIAN IMPROVEMENTS</b> PROVIDENCE DRIVE & ALUMNI DRIVE TYPICAL CROSS SECTIONS AND DETAILS			SCALE: HOR. NTS VER. N/A DATE: JUN 2007 STATUS: 95% DESIGN
CONSULTANT SEAL			SHEET I-C2 of XX

PROVIDENCE EAST DRIVE



File: I:\0107 UMED\00 CAD\Drawings\10107 C Sheets.dwg

GRAPHIC SCALE

FIELD BOOKS	TBM NO.	LOCATION	ELEV.	DATA	DATE	BY	DATA	DATE	BY	REV	DATE	DESCRIPTION	BY	REV	DATE	DESCRIPTION	BY	
				BASE			TELEPHONE											
				TOPOGRAPHY			ELECTRIC											
				PROFILE			DESIGN											
				SANITARY SEWER			QUANTITIES											
				STORM SEWER			PRELIMINARY											
				WATER			FINAL											
				GAS			MUNICIPAL/STATE											
CONSTRUCTION RECORD		VERTICAL DATUM		PLAN CHECK														

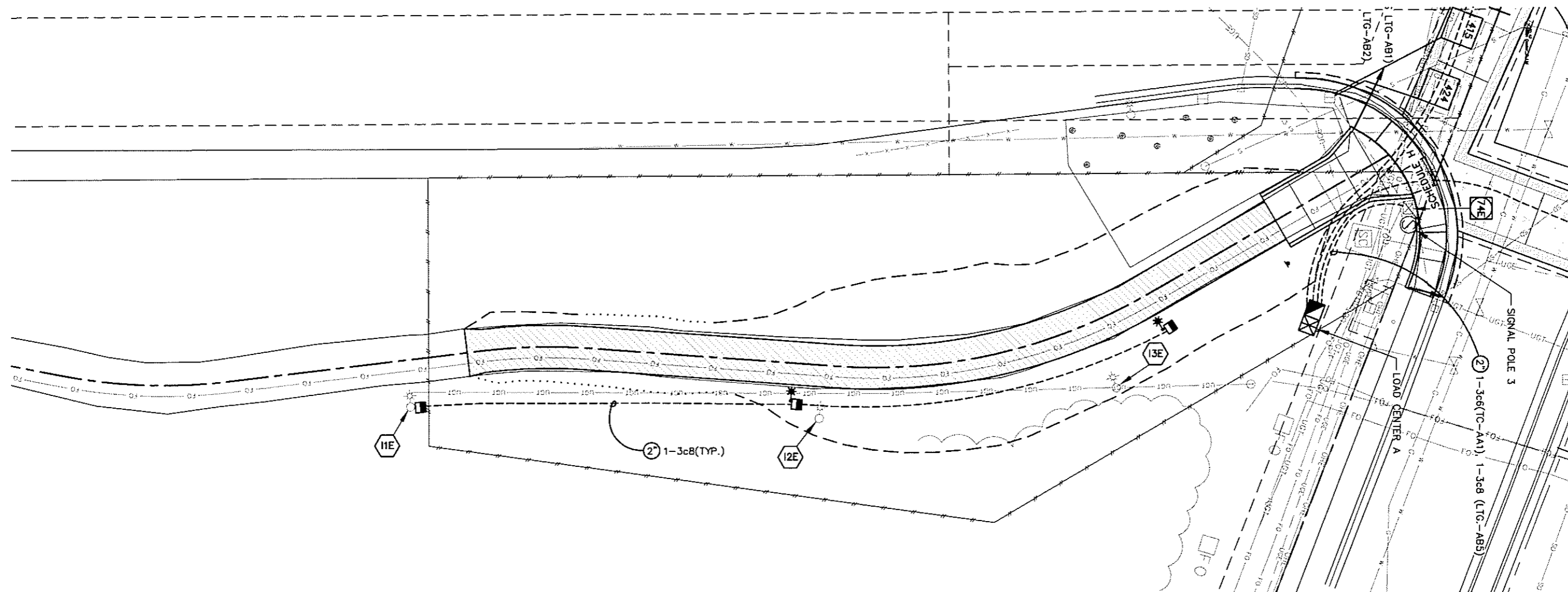


PROJECT MANAGEMENT AND ENGINEERING DEPARTMENT  
OFFICE OF THE MUNICIPAL ENGINEER

PM&E Project No. 04-42 LANDSCAPE SCHED 1

**UMED TRANSIT AND PEDESTRIAN IMPROVEMENTS**  
PROPOSED SIDEWALK & ALUMNI DRIVE

SCALE HOR. 1"=10' DATE JUNE 2007 STATUS 95% DESIGN SHEET 1-L1 of XX



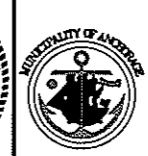
**SCHEDULE I NOTES:**

1. SEE SHEET GEN-17 FOR THE LIGHTING NOTES THAT APPLY TO ALL WORK.
2. DISCONNECT AND THEN REMOVE TRAIL LIGHT POLES 12E AND 13E. SAVE THE POLES, LUMINAIRES, AND ALL ABOVE GROUND PARTS, EXCEPT FOR THE FUSED DISCONNECT KITS.
3. REINSTALL POLES 12E AND 13E ON NEW FOUNDATIONS AT THE LOCATIONS INDICATED, INSTALLING NEWS FUSED DISCONNECT KITS AND 10 AMPERE FUSES.
4. LOCATE THE SPOT WHERE THE CONDUCTORS ENTER THE FOUNDATION OF POLE 11E. INSTALL JBOX 11E AT THIS LOCATION.
5. INSTALL 2" RIGID STEEL CONDUIT AND ILLUMINATION CABLE BETWEEN JBOXES 11E AND 13E, ROUTING THE CONDUIT AND CABLE THROUGH JBOX 12E.
6. SPLICE THE REMAINDER OF THE ILLUMINATION CONDUCTORS IN JBOX 11E.

File: I0107 UMED\00 CAD\Drawings\I0107 E Sheets.dwg  
 UMED\00 CAD\Drawings\I0107 E Sheets.dwg

GRAPHIC SCALE 1" = 10'

DESIGN	FIELD BOOKS	TBM NO.	LOCATION	ELEV.	DATA	DRAWN BY	CHECKED BY	DATA	DRAWN BY	CHECKED BY	REV	DATE	DESCRIPTION	BY	REV	DATE	DESCRIPTION	BY	
DESIGN					BASE			TELEPHONE											
STAGING					TOPOGRAPHY			ELECTRIC											
ASBUILT					PROFILE			DESIGN											
CONTRACTOR					SANITARY SEWER			QUANTITIES											
INSPECTOR					STORM SEWER			PRELIMINARY											
					WATER			FINAL											
					GAS			MANICIPAL/STATE											



PROJECT MANAGEMENT AND ENGINEERING DEPARTMENT  
OFFICE OF THE MUNICIPAL ENGINEER

PM&E Project No. 04-42 ELECTRICAL SCHED I

**UMED TRANSIT AND PEDESTRIAN IMPROVEMENTS**  
PROVIDENCE DRIVE & ALUMNI DRIVE  
TRAIL PLAN & PROFILE

SCALE HOR. 1"=10' DATE JUN 2007 GRID 1733,1734,1735  
VER. 1" = 2' STATUS 95% DESIGN SHEET I-E1 of XX