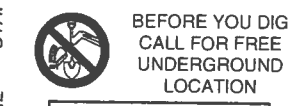
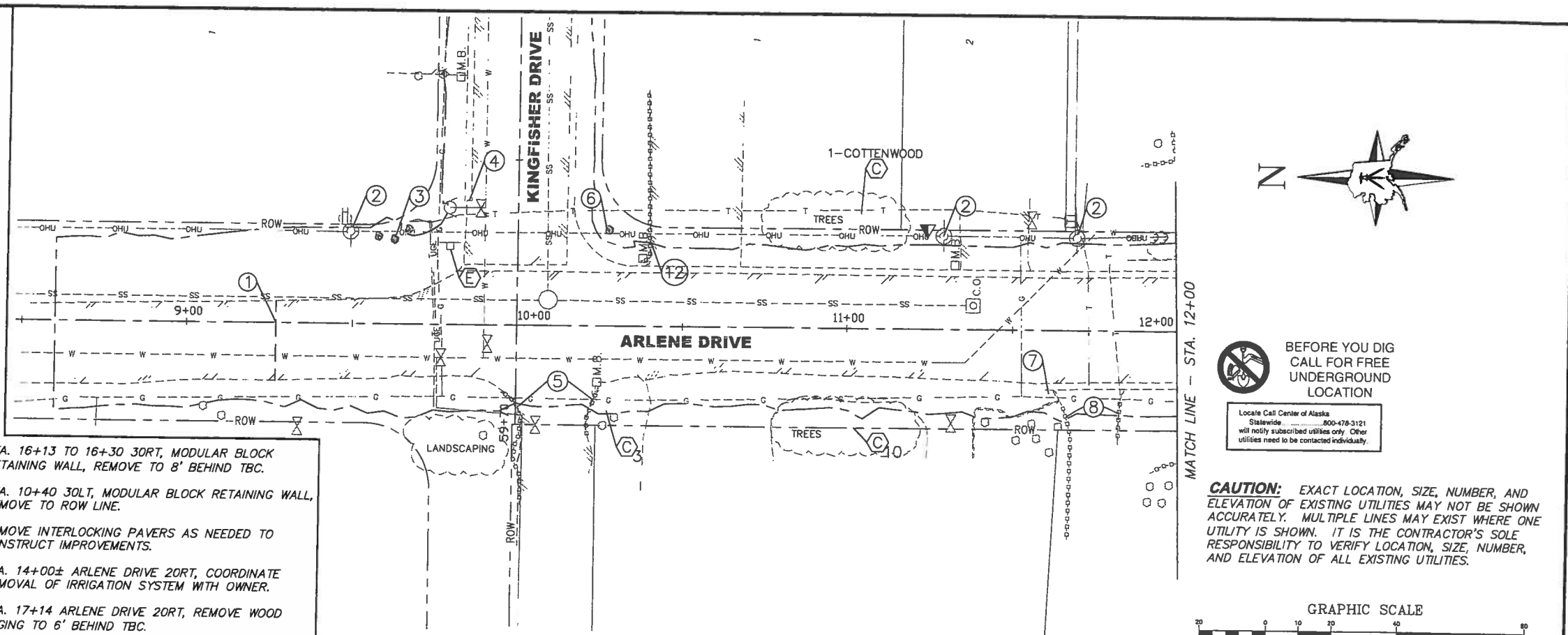


LEGEND

- (A) DO NOT DISTURB VEGETATION AND/OR IMPROVEMENTS.
- (B) NOT USED
- (C) TREE REMOVAL
- 3 NUMBER TREES
- COORDINATE CLEARING WITH ENGINEER. ENGINEER SHALL FLAG INDIVIDUAL TREES WITH 4" CALIPER OR LARGER FOR REMOVAL. DO NOT REMOVE ANY SUCH TREES UNLESS FLAGGED BY THE ENGINEER.
- (D) LUMINAIRE REMOVAL. COORDINATE WITH ELECTRICAL SHEETS.
- (E) SIGN AND POST REMOVAL
- (F) RELOCATE MAILBOX STAND. 113 EACH NOT SHOWN FOR CLARITY.

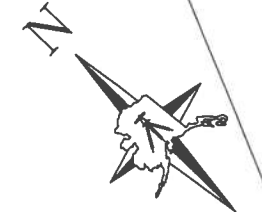
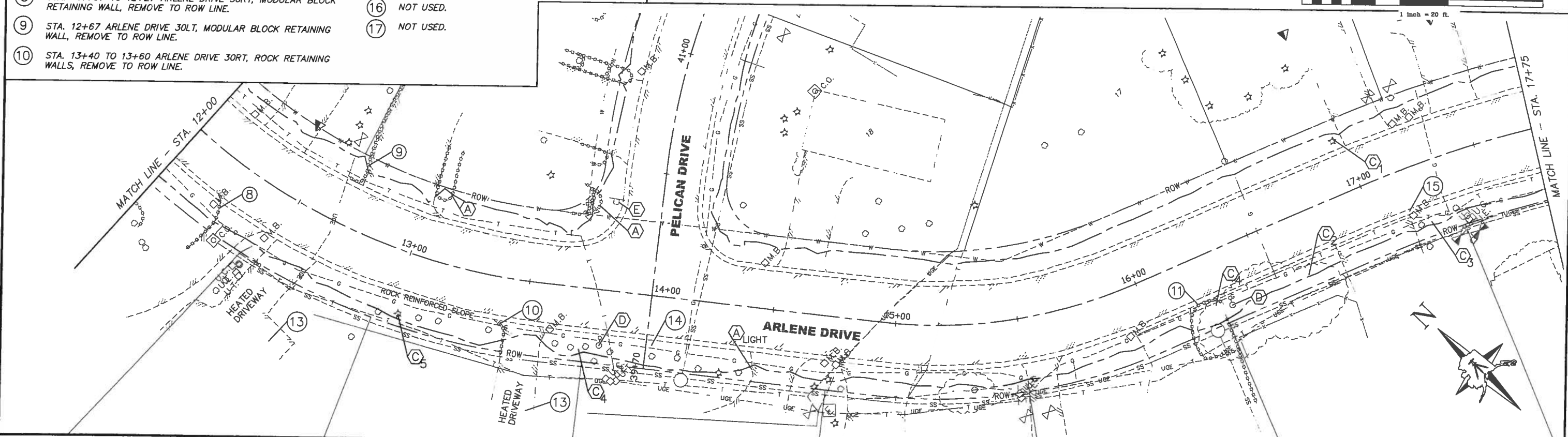
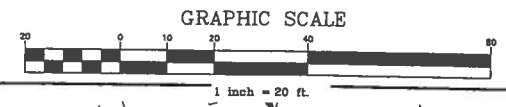
- ROW LINE
- SAWCUT LINE
- CUT/FILL LIMITS
- [Hatched Box] EXISTING PAVEMENT TO BE REMOVED
- [Dashed Line] EXISTING CURB AND GUTTER TO BE REMOVED

- ① STA. 9+27 ARLENE DRIVE 17LT TO 6R; SAWCUT LINE.
- ② STA. 9+50 TO 12+00 ARLENE DRIVE LT; SHORE UTILITY POLES.
- ③ STA. 9+60 ARLENE DRIVE 25LT; RELOCATE 3 ROCKS FROM ROW.
- ④ STA 9+84 ARLENE DRIVE 37LT; BEGIN CURB REMOVAL.
- ⑤ STA. 10+00 TO 10+22 ARLENE DRIVE 30RT, MODULAR BLOCK RETAINING WALL, REMOVE TO ROW LINE.
- ⑥ STA. 10+28 ARLENE DRIVE 29LT; REMOVE ROCK FROM ROW.
- ⑦ STA. 11+60 ARLENE DRIVE 18RT; BEGIN CURB REMOVAL.
- ⑧ STA. 11+67 TO 12+27 ARLENE DRIVE 30RT, MODULAR BLOCK RETAINING WALL, REMOVE TO ROW LINE.
- ⑨ STA. 12+67 ARLENE DRIVE 30LT, MODULAR BLOCK RETAINING WALL, REMOVE TO ROW LINE.
- ⑩ STA. 13+40 TO 13+60 ARLENE DRIVE 30RT, ROCK RETAINING WALLS, REMOVE TO ROW LINE.
- ⑪ STA. 16+13 TO 16+30 30RT, MODULAR BLOCK RETAINING WALL, REMOVE TO 8' BEHIND TBC.
- ⑫ STA. 10+40 30LT, MODULAR BLOCK RETAINING WALL, REMOVE TO ROW LINE.
- ⑬ REMOVE INTERLOCKING PAVERS AS NEEDED TO CONSTRUCT IMPROVEMENTS.
- ⑭ STA. 14+00± ARLENE DRIVE 20RT, COORDINATE REMOVAL OF IRRIGATION SYSTEM WITH OWNER.
- ⑮ STA. 17+14 ARLENE DRIVE 20RT, REMOVE WOOD EDGING TO 6' BEHIND TBC.
- ⑯ NOT USED.
- ⑰ NOT USED.



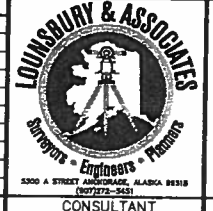
Locate Call Center of Alaska
Statewide 800-478-3121
will notify subscribed utilities only. Other
utilities need to be contacted individually.

CAUTION: EXACT LOCATION, SIZE, NUMBER, AND ELEVATION OF EXISTING UTILITIES MAY NOT BE SHOWN ACCURATELY. MULTIPLE LINES MAY EXIST WHERE ONE UTILITY IS SHOWN. IT IS THE CONTRACTOR'S SOLE RESPONSIBILITY TO VERIFY LOCATION, SIZE, NUMBER, AND ELEVATION OF ALL EXISTING UTILITIES.



PRE-PSE JULY 2010

FIELD BOOKS	BM NO.	LOCATION	ELEV.	DATA	DRAWN BY	CHECKED BY	DATE	DESCRIPTION	BY	REV	DATE	DESCRIPTION	BY
DESIGN: 3483, 3484 (LOUNSBURY)				BASE				TELEPHONE					
STAKING:				TOPOGRAPHY				ELECTRIC					
ASBULT:				PROFILE				CABLE TV					
				SANITARY SEWER				DESIGN					
				STORM SEWER				QUANTITIES					
				WATER				MUN. FINAL CHECK					
				GAS									



**PRE-PS&E
REVIEW
COPY**



PROJECT MANAGEMENT AND ENGINEERING DEPARTMENT
 PM&E PROJECT NO. 06-019
 ARLENE DRIVE/PELICAN DRIVE/PELICAN COURT/KINGFISHER DRIVE ROAD RECONSTRUCTION RID
DEMOLITION PLAN
 DM1 & DM2
 SCALE: H: 1"=20' DATE: JULY 2010 GRIDS: 2427 SHEET DM1 of 54
 ACCT. NO. 08-026

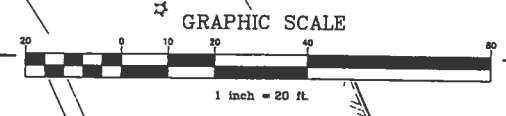
- 18 STA. 17+97 TO 18+43 ARLENE DRIVE, 30RT, WOOD RETAINING WALL, REMOVE TO ROW LINE.
- 19 STA. 18+18 TO 18+37 ARLENE DRIVE 30LT, MODULAR BLOCK RETAINING WALL, REMOVE TO ROW LINE.
- 20 STA. 18+67 TO 18+85 ARLENE DRIVE 30RT, MODULAR BLOCK RETAINING WALL, REMOVE TO 8' BEHIND TBC.
- 21 STA. 18+91 TO 19+15 ARLENE DRIVE 30LT, MODULAR BLOCK RETAINING WALL, REMOVE TO ROW LINE.
- 22 STA. 19+20 ARLENE DRIVE 30RT, MODULAR BLOCK RETAINING WALL, REMOVE TO 8' BEHIND TBC.
- 23 STA. 19+69 TO 20+07 ARLENE DRIVE 30LT, MODULAR BLOCK RETAINING WALL, REMOVE TO ROW LINE.
- 24 STA. 20+05 TO 20+25 ARLENE DRIVE 30RT, MODULAR BLOCK/WOOD RETAINING WALL, REMOVE TO ROW LINE.
- 25 STA. 20+48 ARLENE DRIVE 22LT, REMOVE ROCK FROM ROW.
- 26 STA. 20+50 TO 21+34 ARLENE DRIVE 30LT, WOOD/ROCK RETAINING WALL, REMOVE TO ROW LINE.
- 27 STA. 21+58 ARLENE DRIVE 30LT, MODULAR BLOCK RETAINING WALL, REMOVE TO ROW LINE.
- 28 STA. 22+31 ARLENE DRIVE 30LT, WOOD RETAINING WALL AND 3 ROCKS, REMOVE TO ROW LINE.
- 29 STA. 22+60 TO 23+00 ARLENE DRIVE 30LT, REMOVE WOOD RETAINING WALL AND DECK TO ROW LINE.
- 30 STA. 20+00 ARLENE DRIVE, REMOVE EXISTING STORM DRAIN MANHOLES AND PIPES.
- 31 STA. 25+96 ARLENE DRIVE 45RT TO STA. 26+22 ARLENE DRIVE 38 RT; SAWCUT LINE.
- 32 STA 26+38 ARLENE DRIVE 43RT; REMOVE 3 ROCKS FROM ROW.
- 33 STA. 27+20 ARLENE DRIVE 30L, MODULAR BLOCK RETAINING WALL, REMOVE TO ROW LINE.
- 34 NOT USED.
- 35 NOT USED.

- LEGEND**
- (A) DO NOT DISTURB VEGETATION AND/OR IMPROVEMENTS.
 - (B) NOT USED
 - (C) TREE REMOVAL
NUMBER TREES
COORDINATE CLEARING WITH ENGINEER. ENGINEER SHALL FLAG INDIVIDUAL TREES WITH 4" CALIPER OR LARGER FOR REMOVAL. DO NOT REMOVE ANY SUCH TREES UNLESS FLAGGED BY THE ENGINEER.
 - (D) LUMINAIRE REMOVAL. COORDINATE WITH ELECTRICAL SHEETS.
 - (E) SIGN AND POST REMOVAL
 - (F) RELOCATE MAILBOX STAND. 113 EACH NOT SHOWN FOR CLARITY.
 - ROW LINE
 - SAWCUT LINE
 - CUT/FILL LIMITS
 - EXISTING PAVEMENT TO BE REMOVED
 - EXISTING CURB AND GUTTER TO BE REMOVED

**BEFORE YOU DIG
CALL FOR FREE
UNDERGROUND
LOCATION**

Locate Call Center of Alaska
Statewide 1-800-478-3121
will notify subscribed utilities only. Other
utilities need to be contacted individually.

CAUTION: EXACT LOCATION, SIZE, NUMBER, AND ELEVATION OF EXISTING UTILITIES MAY NOT BE SHOWN ACCURATELY. MULTIPLE LINES MAY EXIST WHERE ONE UTILITY IS SHOWN. IT IS THE CONTRACTOR'S SOLE RESPONSIBILITY TO VERIFY LOCATION, SIZE, NUMBER, AND ELEVATION OF ALL EXISTING UTILITIES.



PRE-PSE JULY 2010

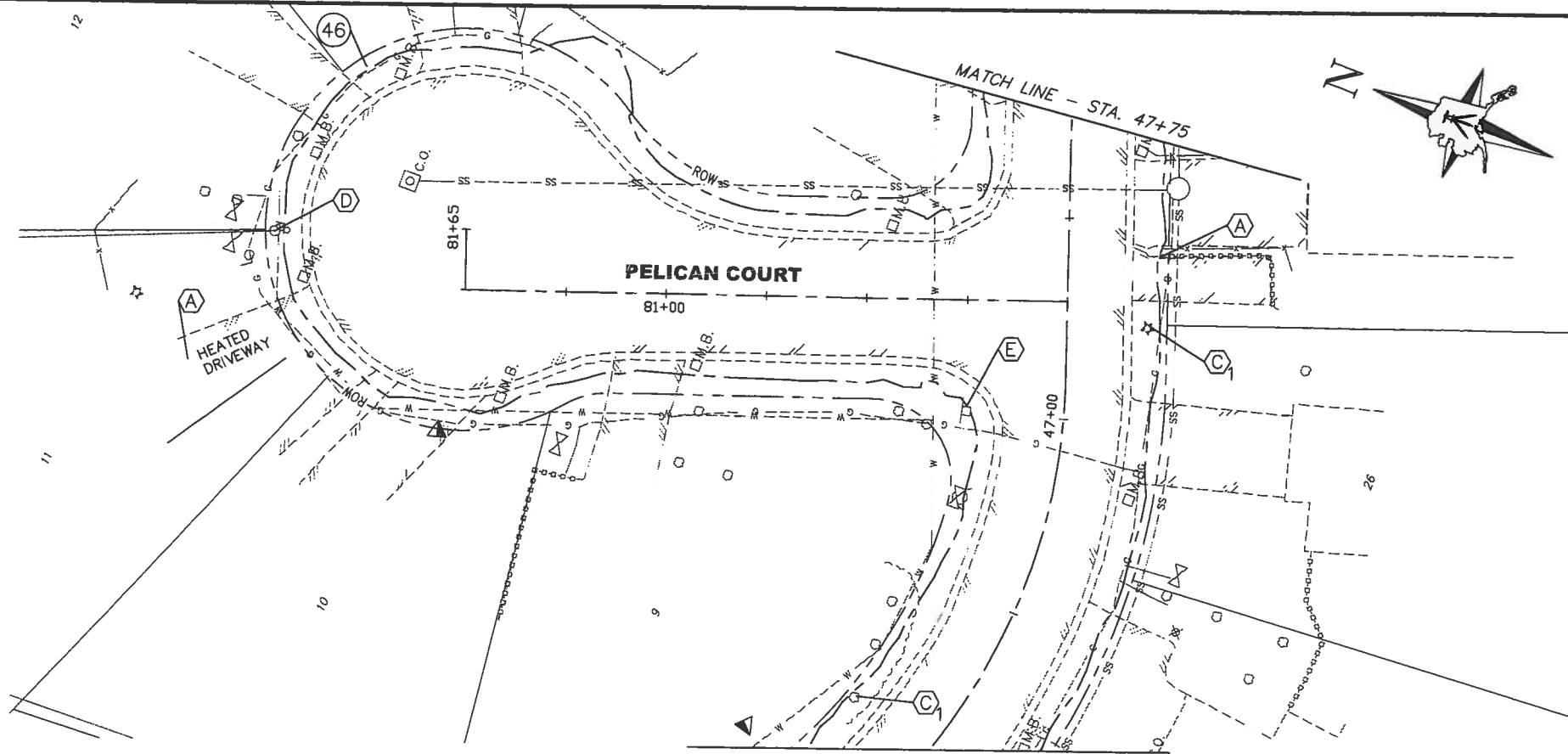
FIELD BOOKS	BM NO.	LOCATION	ELEV.	DATA	DRAWN BY	CHECKED BY	DATA	DRAWN BY	CHECKED BY	REV	DATE	DESCRIPTION	BY	REV	DATE	DESCRIPTION	BY	
DESIGN: 3483, 3484 (LOUNSBURY)				BASE			TELEPHONE											
STAKING:				TOPOGRAPHY			ELECTRIC											
ASBUILT:				PROFILE			CABLE TV											
CONTRACTOR:				SANITARY SEWER			DESIGN											
INSPECTOR:				STORM SEWER			QUANTITIES											
				WATER			MUN. FINAL CHECK											
				GAS														



**PRE-PS&E
REVIEW
COPY**



PROJECT MANAGEMENT AND ENGINEERING DEPARTMENT	
PM&E PROJECT NO. 06-019	
ARLENE DRIVE/PELICAN DRIVE/PELICAN COURT/KINGFISHER DRIVE ROAD RECONSTRUCTION RID	
DEMOLITION PLAN	
DM3 & DM4	
SCALE: 1"=20'	DATE: JULY 2010
ACCT. NO. 06-026	GRIDS: 2427
	SHEET DM2 of 54



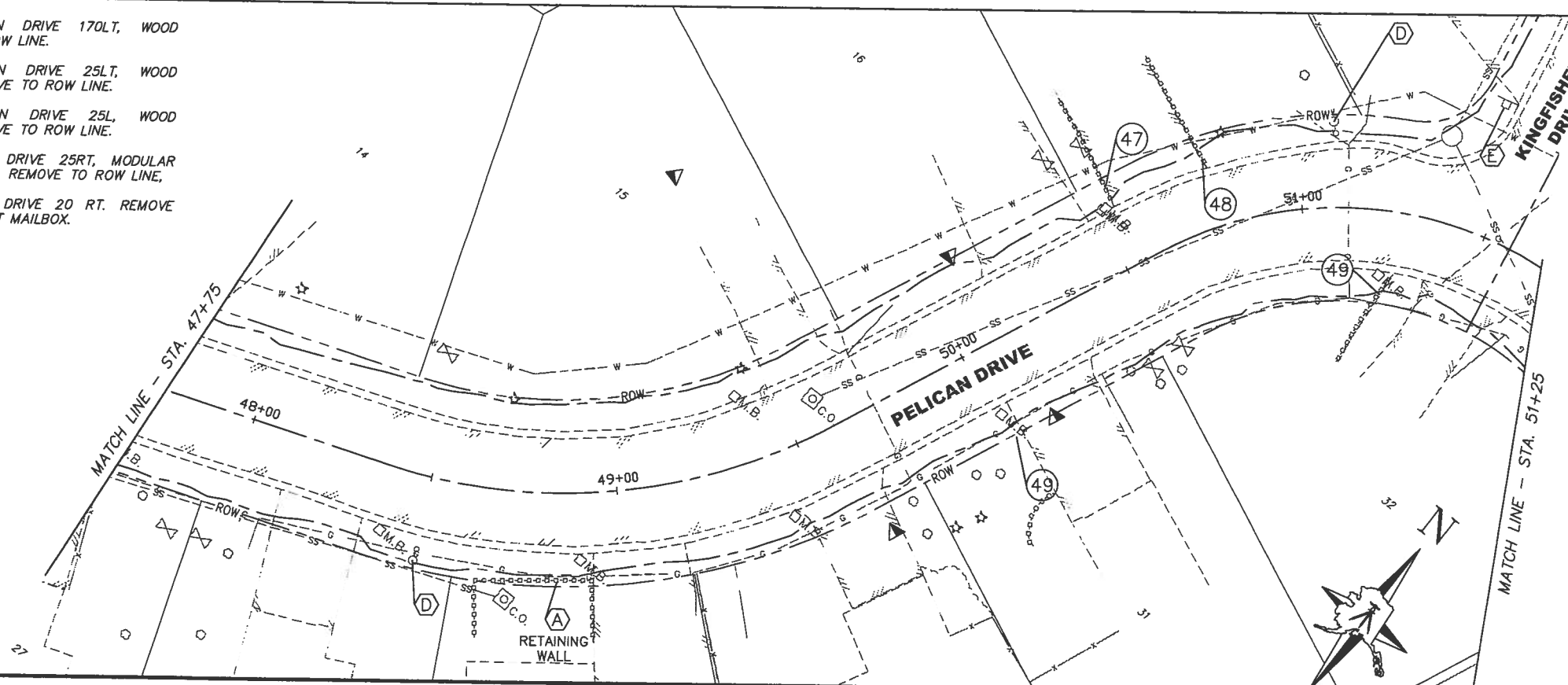
Locate Call Center of Alaska
Statewide: 800-478-3121
will notify subscribed utilities only. Other
utilities need to be contacted individually.

CAUTION: EXACT LOCATION, SIZE, NUMBER, AND ELEVATION OF EXISTING UTILITIES MAY NOT BE SHOWN ACCURATELY. MULTIPLE LINES MAY EXIST WHERE ONE UTILITY IS SHOWN. IT IS THE CONTRACTOR'S SOLE RESPONSIBILITY TO VERIFY LOCATION, SIZE, NUMBER, AND ELEVATION OF ALL EXISTING UTILITIES.

GRAPHIC SCALE



- 46 STA. 47+80 PELICAN DRIVE 170LT, WOOD STAIRS, REMOVE TO ROW LINE.
- 47 STA. 50+55 PELICAN DRIVE 25LT, WOOD RETAINING WALL, REMOVE TO ROW LINE.
- 48 STA. 50+77 PELICAN DRIVE 25L, WOOD RETAINING WALL, REMOVE TO ROW LINE.
- 49 STA. 51+22 PELICAN DRIVE 25RT, MODULAR BLOCK RETAINING WALL, REMOVE TO ROW LINE.
- 50 STA. 50+02 PELICAN DRIVE 20 RT. REMOVE BLOCK LANDSCAPING AT MAILBOX.
- 51 NOT USED.
- 52 NOT USED.

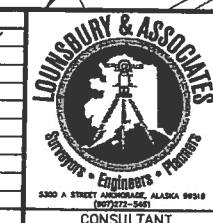


LEGEND

- A DO NOT DISTURB VEGETATION AND/OR IMPROVEMENTS.
- B NOT USED
- C TREE REMOVAL
3 NUMBER TREES
COORDINATE CLEARING WITH ENGINEER. ENGINEER SHALL FLAG INDIVIDUAL TREES WITH 4" CALIPER OR LARGER FOR REMOVAL. DO NOT REMOVE ANY SUCH TREES UNLESS FLAGGED BY THE ENGINEER.
- D LUMINAIRE REMOVAL. COORDINATE WITH ELECTRICAL SHEETS.
- E SIGN AND POST REMOVAL
- F RELOCATE MAILBOX STAND. 113 EACH NOT SHOWN FOR CLARITY.
- ROW LINE
- SAWCUT LINE
- CUT/FILL LIMITS
- EXISTING PAVEMENT TO BE REMOVED
- EXISTING CURB AND GUTTER TO BE REMOVED

PRE-PSE JULY 2010

FIELD BOOKS	BM NO.	LOCATION	ELEV.	DATA	DRAWN BY	CHECKED BY	DATA	SWORN BY	CHECKED BY	REV	DATE	DESCRIPTION	BY	REV	DATE	DESCRIPTION	BY
DESIGN: 3483, 3484 (LOUNSBURY)				BASE TOPOGRAPHY			TELEPHONE										
STAKING:				PROFILE			ELECTRIC										
ASBUILT:				SANITARY SEWER			CABLE TV										
CONTRACTOR:				STORM SEWER			DESIGN										
INSPECTOR:				WATER			QUANTITIES										
				GAS			MUN. FINAL CHECK										
CONSTRUCTION RECORD																	

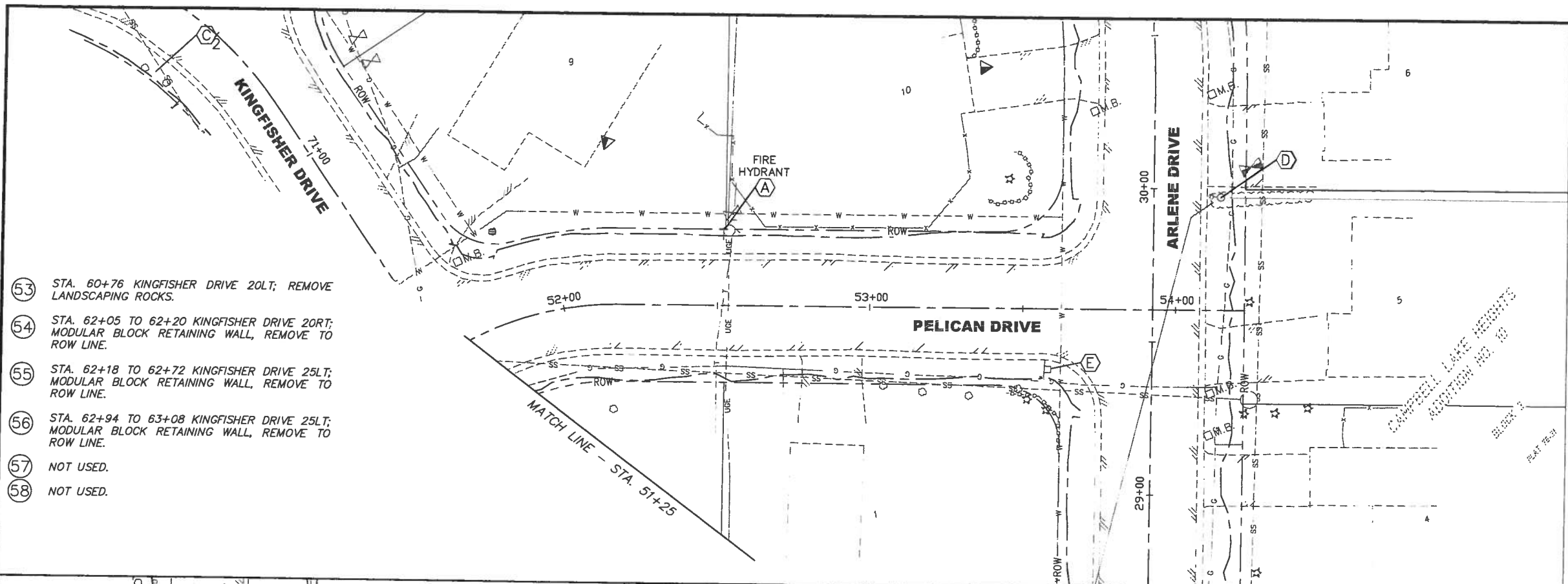


PRE-PS&E REVIEW COPY

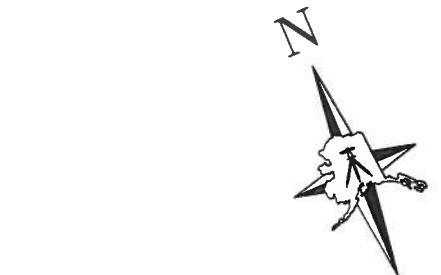


PROJECT MANAGEMENT AND ENGINEERING DEPARTMENT
 PM&E PROJECT NO. 06-019
 ARLENE DRIVE/PELICAN DRIVE/PELICAN COURT/KINGFISHER DRIVE ROAD RECONSTRUCTION RID
DEMOLITION PLAN
 DM7 & DMB
 SCALE: H: 1"=20' DATE: JULY 2010 GRIDS: 2427 SHEET DM4 of 54
 ACCT. NO. 08-026

PRE-PSE JULY 2010



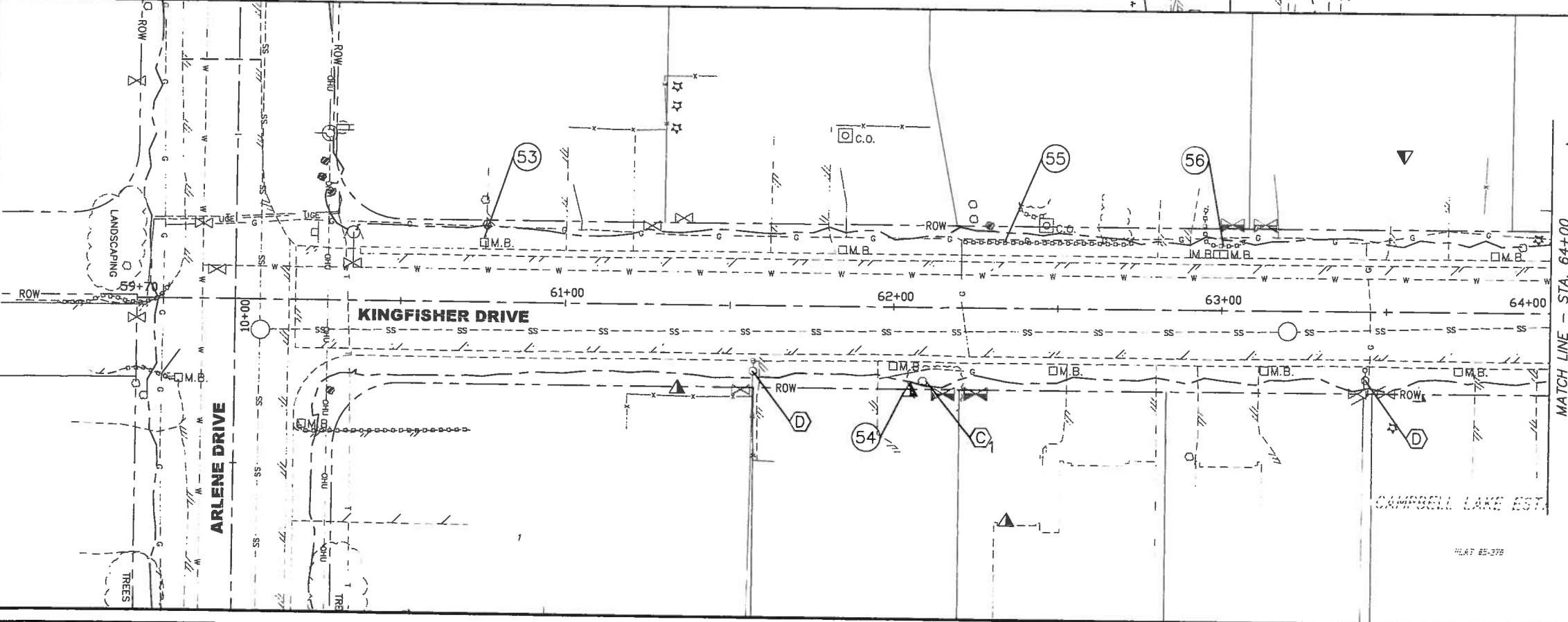
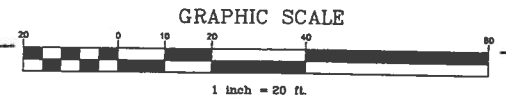
- 53 STA. 60+76 KINGFISHER DRIVE 20LT; REMOVE LANDSCAPING ROCKS.
- 54 STA. 62+05 TO 62+20 KINGFISHER DRIVE 20RT; MODULAR BLOCK RETAINING WALL, REMOVE TO ROW LINE.
- 55 STA. 62+18 TO 62+72 KINGFISHER DRIVE 25LT; MODULAR BLOCK RETAINING WALL, REMOVE TO ROW LINE.
- 56 STA. 62+94 TO 63+08 KINGFISHER DRIVE 25LT; MODULAR BLOCK RETAINING WALL, REMOVE TO ROW LINE.
- 57 NOT USED.
- 58 NOT USED.



BEFORE YOU DIG CALL FOR FREE UNDERGROUND LOCATION

Locate Call Center of Alaska
Statewide 800-478-2121
will notify subscribed utilities only. Other utilities need to be contacted individually.

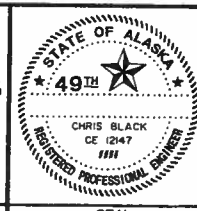
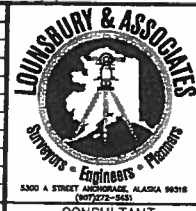
CAUTION: EXACT LOCATION, SIZE, NUMBER, AND ELEVATION OF EXISTING UTILITIES MAY NOT BE SHOWN ACCURATELY. MULTIPLE LINES MAY EXIST WHERE ONE UTILITY IS SHOWN. IT IS THE CONTRACTOR'S SOLE RESPONSIBILITY TO VERIFY LOCATION, SIZE, NUMBER, AND ELEVATION OF ALL EXISTING UTILITIES.



LEGEND

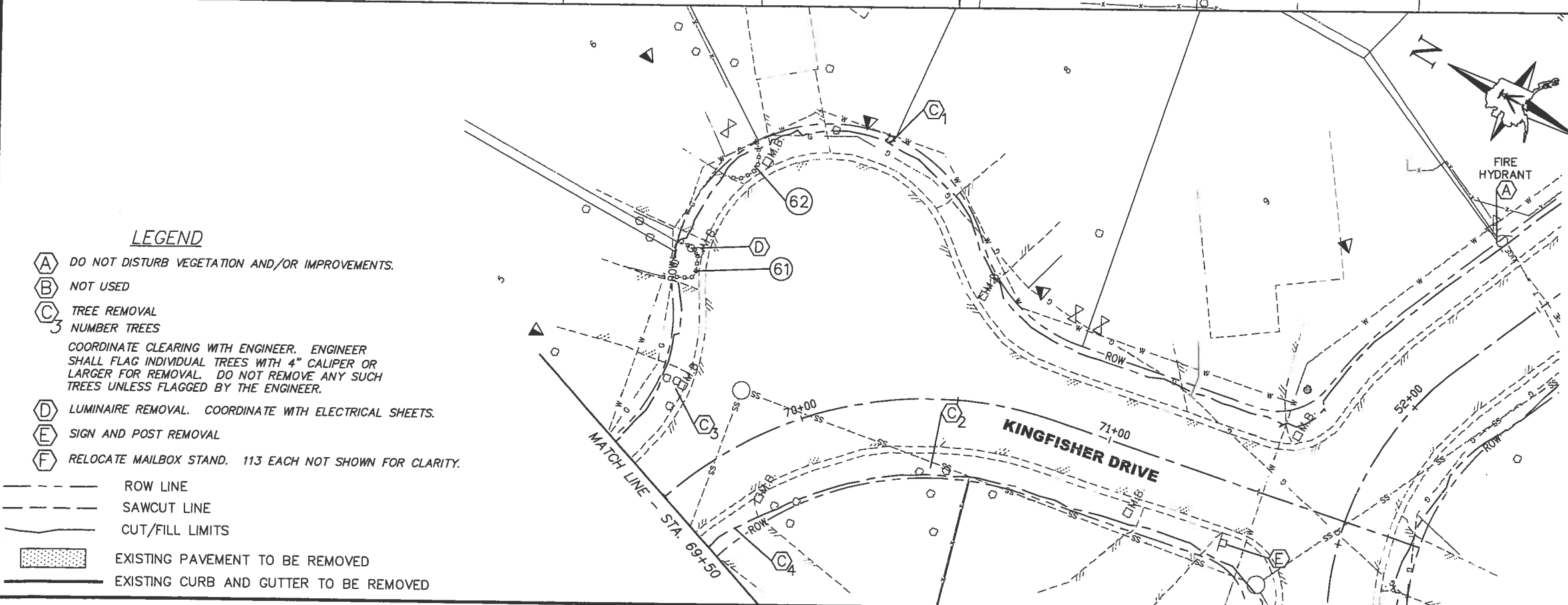
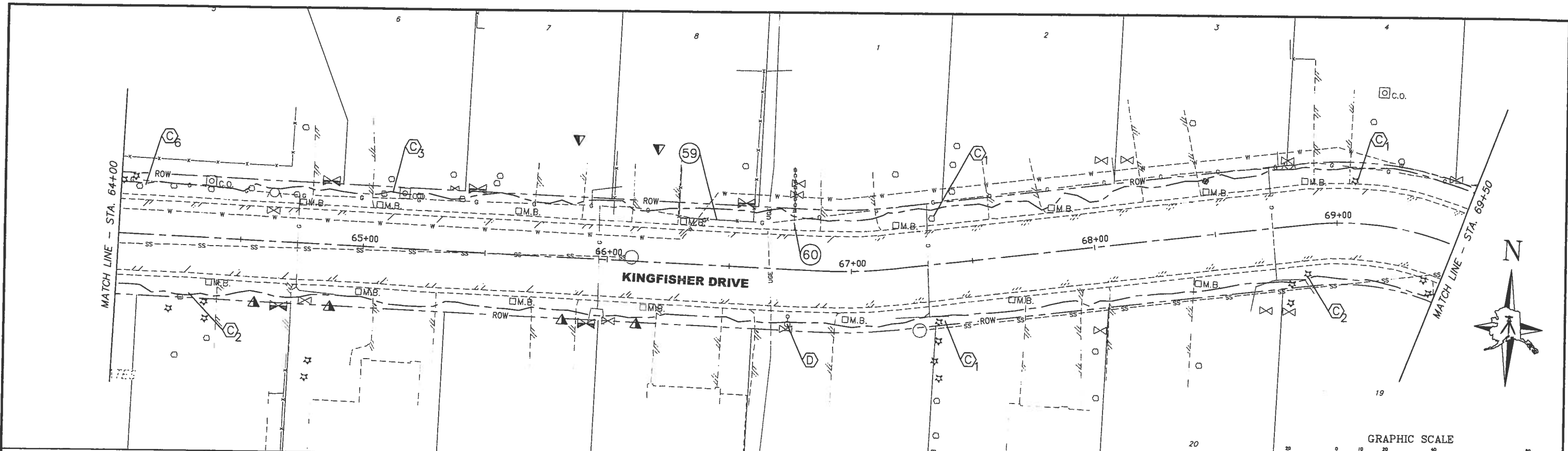
- (A) DO NOT DISTURB VEGETATION AND/OR IMPROVEMENTS.
- (B) NOT USED
- (C) TREE REMOVAL
- 3 NUMBER TREES
- COORDINATE CLEARING WITH ENGINEER. ENGINEER SHALL FLAG INDIVIDUAL TREES WITH 4" CALIPER OR LARGER FOR REMOVAL. DO NOT REMOVE ANY SUCH TREES UNLESS FLAGGED BY THE ENGINEER.
- (D) LUMINAIRE REMOVAL. COORDINATE WITH ELECTRICAL SHEETS.
- (E) SIGN AND POST REMOVAL
- (F) RELOCATE MAILBOX STAND. 113 EACH NOT SHOWN FOR CLARITY.
- ROW LINE
- - - SAWCUT LINE
- CUT/FILL LIMITS
- [Hatched Box] EXISTING PAVEMENT TO BE REMOVED
- [Dashed Box] EXISTING CURB AND GUTTER TO BE REMOVED

FIELD BOOKS	BM NO.	LOCATION	ELEV.	DATA	DESIGNED BY	DATA	DESIGNED BY	REV	DATE	DESCRIPTION	BY	REV	DATE	DESCRIPTION	BY
DESIGN: 3483, 3484 (LOUNSBURY)				BASE		TELEPHONE									
STAKING:				TOPOGRAPHY		ELECTRIC									
ASBUILT:				PROFILE		CABLE TV									
				SANITARY SEWER		DESIGN									
				STORM SEWER		QUANTITIES									
				WATER		MUN. FINAL CHECK									
				GAS											
CONTRACTOR:	BASIS OF DATUM: 1972 N.G.S. DATUM														
INSPECTOR:	MONUMENT NAME: GAAB39														
	ELEVATION: 62.20														
CONSTRUCTION RECORD	VERTICAL DATUM			PLAN CHECK				REVISIONS							



PROJECT MANAGEMENT AND ENGINEERING DEPARTMENT
 PM&E PROJECT NO. 06-019
 ARLENE DRIVE/PELICAN DRIVE/PELICAN COURT/KINGFISHER DRIVE ROAD RECONSTRUCTION RID
DEMOLITION PLAN
 DM9 & DM10
 SCALE: H: 1"=20' DATE: JULY 2010 GRIDS: 2427 SHEET DM5 of 54
 V: 1"=X' ACCT. NO. 08-026

PRE-PSE JULY 2010



LEGEND

- (A) DO NOT DISTURB VEGETATION AND/OR IMPROVEMENTS.
- (B) NOT USED
- (C) TREE REMOVAL
3 NUMBER TREES
COORDINATE CLEARING WITH ENGINEER. ENGINEER SHALL FLAG INDIVIDUAL TREES WITH 4" CALIPER OR LARGER FOR REMOVAL. DO NOT REMOVE ANY SUCH TREES UNLESS FLAGGED BY THE ENGINEER.
- (D) LUMINAIRE REMOVAL. COORDINATE WITH ELECTRICAL SHEETS.
- (E) SIGN AND POST REMOVAL
- (F) RELOCATE MAILBOX STAND. 113 EACH NOT SHOWN FOR CLARITY.
- ROW LINE
- SAWCUT LINE
- CUT/FILL LIMITS
- EXISTING PAVEMENT TO BE REMOVED
- EXISTING CURB AND GUTTER TO BE REMOVED

**BEFORE YOU DIG
CALL FOR FREE
UNDERGROUND
LOCATION**

Locate Call Center of Alaska
Statewide: 1-800-478-3121
will notify subscribed utilities only. Other
utilities need to be contacted individually.

CAUTION: EXACT LOCATION, SIZE, NUMBER, AND ELEVATION OF EXISTING UTILITIES MAY NOT BE SHOWN ACCURATELY. MULTIPLE LINES MAY EXIST WHERE ONE UTILITY IS SHOWN. IT IS THE CONTRACTOR'S SOLE RESPONSIBILITY TO VERIFY LOCATION, SIZE, NUMBER, AND ELEVATION OF ALL EXISTING UTILITIES.

- (59) STA. 66+28 TO 66+60 KINGFISHER DRIVE 25LT; RESET WOOD FENCE AT ROW LINE.
- (60) STA. 66+75 KINGFISHER DRIVE 22LT; WOOD RETAINING WALL, REMOVE TO ROW LINE.
- (61) STA. 69+83 TO 69+81 KINGFISHER DRIVE 62LT, MODULAR BLOCK RETAINING WALL, REMOVE TO ROW LINE.
- (62) STA. 69+99 TO 70+08 PELICAN DRIVE 84LT, MODULAR BLOCK RETAINING WALL, REMOVE TO ROW LINE.
- (63) NOT USED.
- (64) NOT USED.

FIELD BOOKS	BM NO.	LOCATION	ELEV.	DATA	DRAWN BY	CHECKED BY	DATA	DRAWN BY	CHECKED BY	REV	DATE	DESCRIPTION	BY	REV	DATE	DESCRIPTION	BY
DESIGN: 3483, 3484 (LOUNSBURY)				BASE			TELEPHONE										
STAKING:				TOPOGRAPHY			ELECTRIC										
ASBUILT:				PROFILE			CABLE TV										
CONTRACTOR:				SANITARY SEWER			DESIGN										
INSPECTOR:				STORM SEWER			QUANTITIES										
				WATER			MUN. FINAL CHECK										
				GAS													

LOUNSBURY & ASSOCIATES
Surveyors - Engineers - Planners
5300 A STREET, ANCHORAGE, ALASKA 99518
(907) 273-2425

STATE OF ALASKA
49th
CHRIS BLACK
CE 1247
1111
REGISTERED PROFESSIONAL ENGINEER

UNIVERSITY OF ANCHORAGE

PROJECT MANAGEMENT AND ENGINEERING DEPARTMENT
PM&E PROJECT NO. 06-019
ARLENE DRIVE/PELICAN DRIVE/PELICAN COURT/KINGFISHER DRIVE ROAD RECONSTRUCTION RID
DEMOLITION PLAN
DM11 & DM12
SCALE: H: 1"=20'
V: 1"=4'
DATE: JULY 2010
ACCT. NO. 08-028
GRIDS: 2427
SHEET DM6 of 54