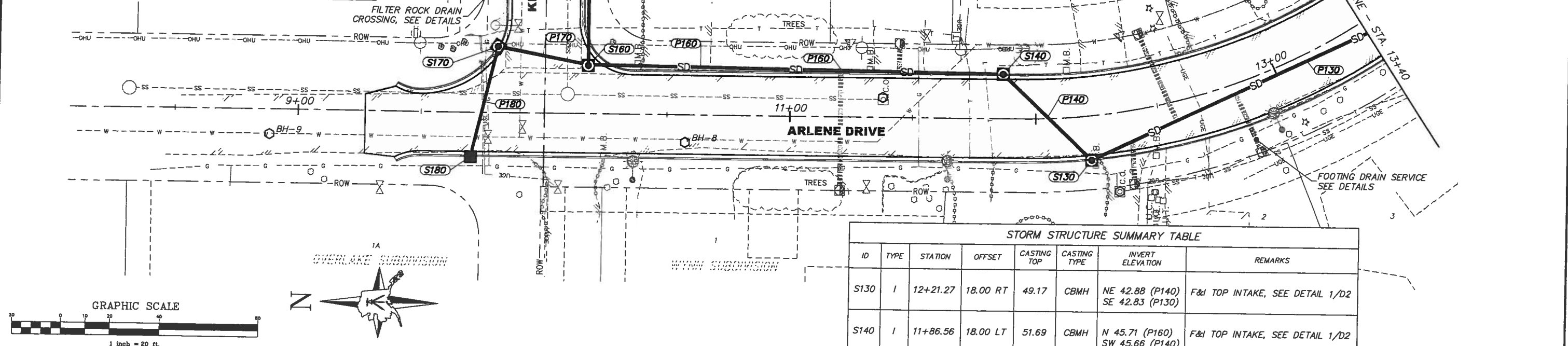
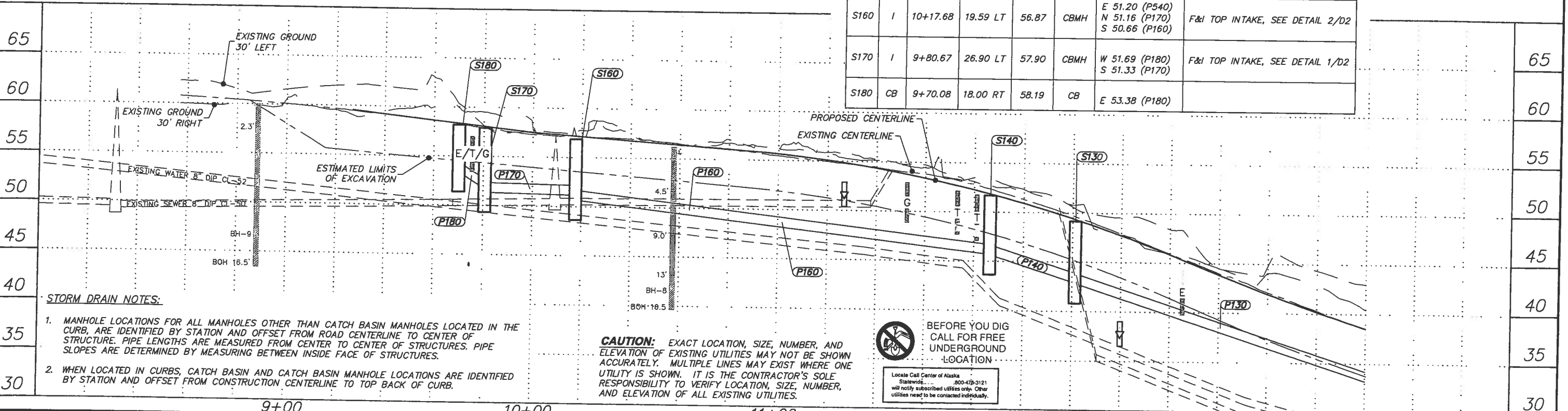


PIPE ID	LENGTH	SIZE	FROM	TO	% SLOPE	MATERIAL	REMARKS
P130	193.05	12	S130	S100	8.00%	CPEP TYPE S, SUBDRAIN	
P140	50.28	12	S140	S130	6.00%	CPEP TYPE S, SUBDRAIN	
P160	168.88	12	S160	S140	3.00%	CPEP TYPE S, SUBDRAIN	
P170	37.69	12	S170	S160	0.50%	CPEP TYPE S, SUBDRAIN	
P180	46.13	12	S180	S170	4.00%	CPEP TYPE S, SUBDRAIN	



ID	TYPE	STATION	OFFSET	CASTING TOP	CASTING TYPE	INVERT ELEVATION	REMARKS
S130	I	12+21.27	18.00 RT	49.17	CBMH	NE 42.88 (P140) SE 42.83 (P130)	F&I TOP INTAKE, SEE DETAIL 1/D2
S140	I	11+86.56	18.00 LT	51.69	CBMH	N 45.71 (P160) SW 45.66 (P140)	F&I TOP INTAKE, SEE DETAIL 1/D2
S160	I	10+17.68	19.59 LT	56.87	CBMH	E 51.20 (P540) N 51.16 (P170) S 50.66 (P160)	F&I TOP INTAKE, SEE DETAIL 2/D2
S170	I	9+80.67	26.90 LT	57.90	CBMH	W 51.69 (P180) S 51.33 (P170)	F&I TOP INTAKE, SEE DETAIL 1/D2
S180	CB	9+70.08	18.00 RT	58.19	CB	E 53.38 (P180)	



STORM DRAIN NOTES:

1. MANHOLE LOCATIONS FOR ALL MANHOLES OTHER THAN CATCH BASIN MANHOLES LOCATED IN THE CURB, ARE IDENTIFIED BY STATION AND OFFSET FROM ROAD CENTERLINE TO CENTER OF STRUCTURE. PIPE LENGTHS ARE MEASURED FROM CENTER TO CENTER OF STRUCTURES. PIPE SLOPES ARE DETERMINED BY MEASURING BETWEEN INSIDE FACE OF STRUCTURES.
2. WHEN LOCATED IN CURBS, CATCH BASIN AND CATCH BASIN MANHOLE LOCATIONS ARE IDENTIFIED BY STATION AND OFFSET FROM CONSTRUCTION CENTERLINE TO TOP BACK OF CURB.

CAUTION: EXACT LOCATION, SIZE, NUMBER, AND ELEVATION OF EXISTING UTILITIES MAY NOT BE SHOWN ACCURATELY. MULTIPLE LINES MAY EXIST WHERE ONE UTILITY IS SHOWN. IT IS THE CONTRACTOR'S SOLE RESPONSIBILITY TO VERIFY LOCATION, SIZE, NUMBER, AND ELEVATION OF ALL EXISTING UTILITIES.

BEFORE YOU DIG CALL FOR FREE UNDERGROUND LOCATION

Locate Call Center of Alaska
Statewide... 800-478-3121
will notify subscribed utilities only. Other utilities need to be contacted individually.

PRE-PSE JULY 2010

FIELD BOOKS	BM NO.	LOCATION	ELEV.	DATA	DRAWN BY	CHECKED BY	DATA	DRAWN BY	CHECKED BY	REV	DATE	DESCRIPTION	BY	REV	DATE	DESCRIPTION	BY
DESIGN: 3483, 3484 (LOUNSBURY)				BASE			TELEPHONE										
STAKING:				TOPOGRAPHY			ELECTRIC										
ASBUILT:				PROFILE			CABLE TV										
CONTRACTOR:				SANITARY SEWER			DESIGN										
INSPECTOR:				STORM SEWER			QUANTITIES										
				WATER			MUN. FINAL CHECK										
				GAS													



**PRE-PS&E
REVIEW
COPY**



PROJECT MANAGEMENT AND ENGINEERING DEPARTMENT

PM&E PROJECT NO. 06-019

ARLENE DRIVE/PELICAN DRIVE/PELICAN COURT/KINGFISHER DRIVE ROAD RECONSTRUCTION RID

STORM DRAIN - ARLENE DRIVE

STA 9+27 TO 13+40

SCALE: H: 1"=20'
V: 1"=5'

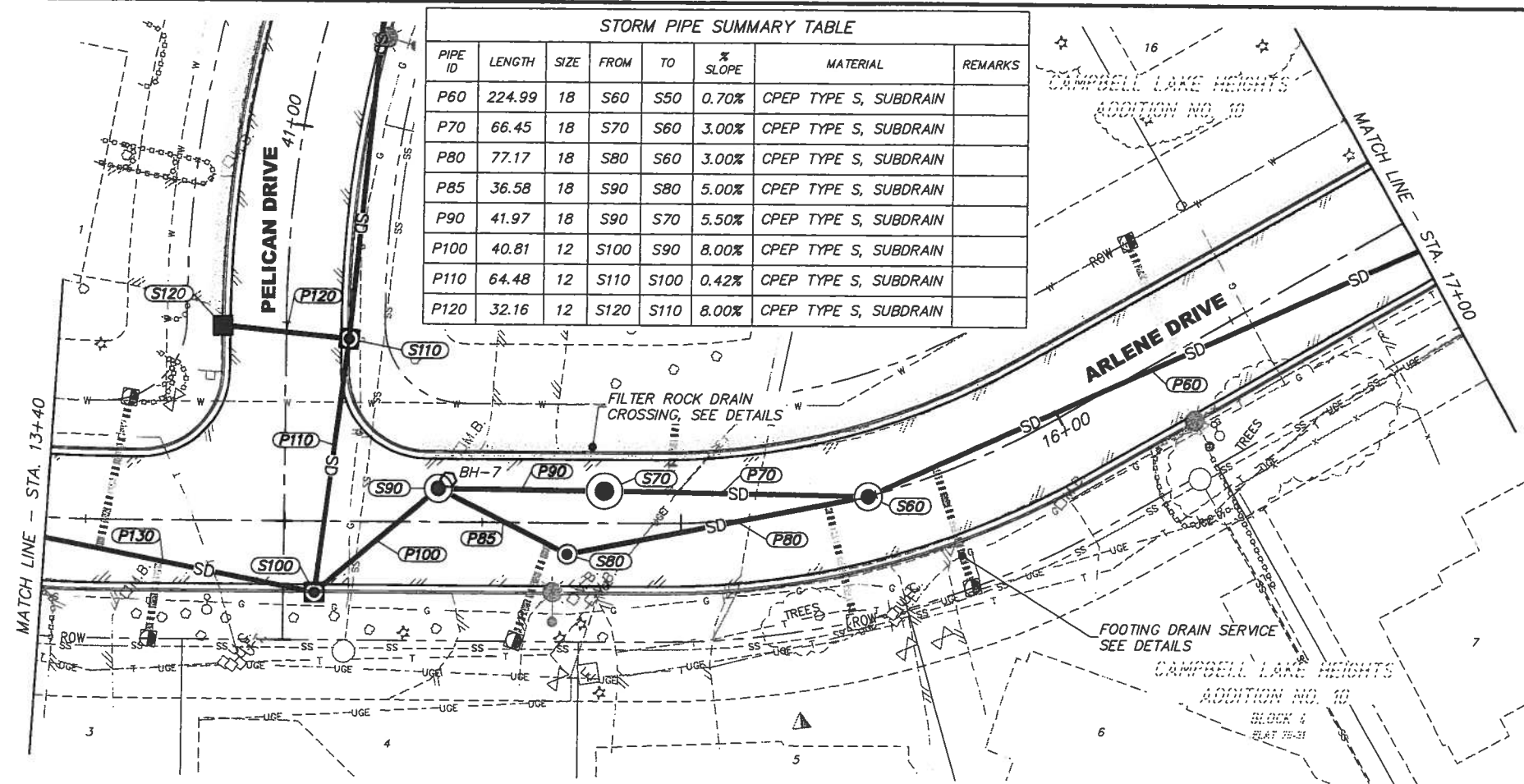
DATE: JULY 2010
ACCT. NO. 08-026

GRIDS: 2427

SHEET SD1 of 54

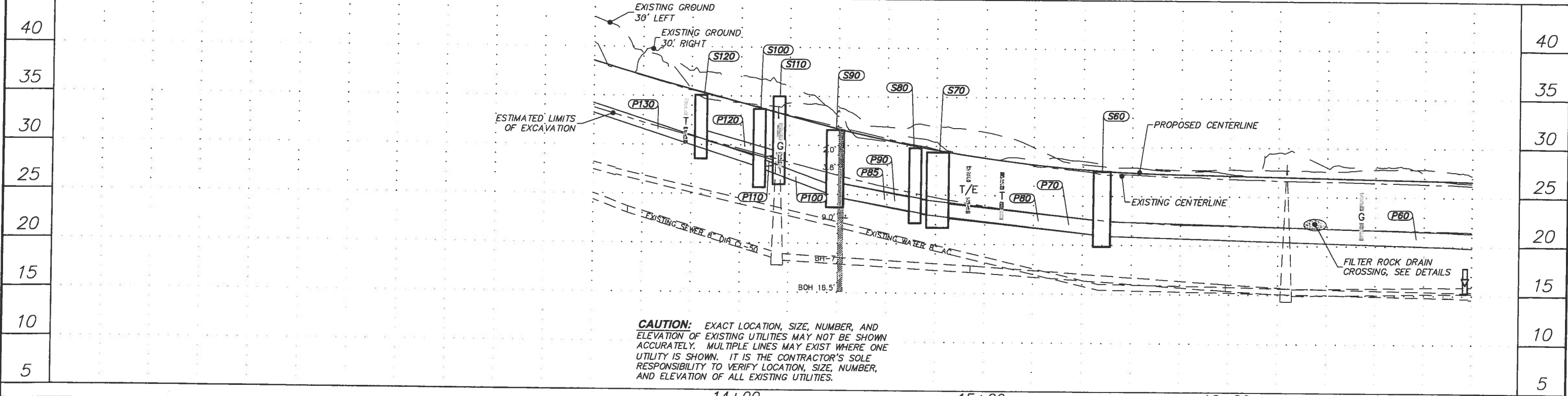
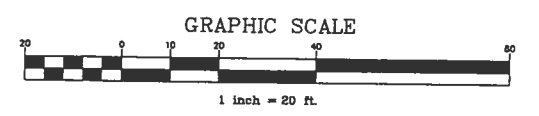
STORM STRUCTURE SUMMARY TABLE							
ID	TYPE	STATION	OFFSET	CASTING TOP	CASTING TYPE	INVERT ELEVATION	REMARKS
S60	II	15+47.90	0.00	27.50	MH	SE 20.90 (P60) NW 20.95 (P80) NW 20.95 (P70)	
S70		14+80.82	8.09 LT	29.35	MH	NW 22.82 (P90) SE 22.73 (P70)	F&I OG SEPARATOR SEE DETAIL 3/D1
S80	I	14+71.56	7.89 RT	29.78	MH	SE 23.12 (P80) N 23.17 (P85)	
S90	II	14+38.85	8.48 LT	31.55	MH	W 24.80 (P100) S 24.74 (P85) SE 24.74 (P90)	F&I WEIR STRUCTURE, SEE DETAIL 4/D1
S100	I	14+07.79	18.00 RT	33.65	CBMH	NW 27.71 (P130) E 27.66 (P100) NE 27.71 (P110)	F&I TOP INTAKE, SEE DETAIL 1/D2
S110	I	14+15.85	45.98 LT	34.95	CBMH	E 28.380 (P380) NW 28.31 (P120) SW 27.97 (P110)	F&I TOP INTAKE, SEE DETAIL 1/D2
S120	CB	13+83.85	49.14 LT	35.06	CB	SE 30.56 (P120)	

STORM PIPE SUMMARY TABLE							
PIPE ID	LENGTH	SIZE	FROM	TO	% SLOPE	MATERIAL	REMARKS
P60	224.99	18	S60	S50	0.70%	CPEP TYPE S, SUBDRAIN	
P70	66.45	18	S70	S60	3.00%	CPEP TYPE S, SUBDRAIN	
P80	77.17	18	S80	S60	3.00%	CPEP TYPE S, SUBDRAIN	
P85	36.58	18	S90	S80	5.00%	CPEP TYPE S, SUBDRAIN	
P90	41.97	18	S90	S70	5.50%	CPEP TYPE S, SUBDRAIN	
P100	40.81	12	S100	S90	8.00%	CPEP TYPE S, SUBDRAIN	
P110	64.48	12	S110	S100	0.42%	CPEP TYPE S, SUBDRAIN	
P120	32.16	12	S120	S110	8.00%	CPEP TYPE S, SUBDRAIN	



BEFORE YOU DIG CALL FOR FREE UNDERGROUND LOCATION

Locate Call Center of Alaska
Statewide: 800-478-3121
will notify subscribed utilities only. Other utilities need to be contacted individually.



CAUTION: EXACT LOCATION, SIZE, NUMBER, AND ELEVATION OF EXISTING UTILITIES MAY NOT BE SHOWN ACCURATELY. MULTIPLE LINES MAY EXIST WHERE ONE UTILITY IS SHOWN. IT IS THE CONTRACTOR'S SOLE RESPONSIBILITY TO VERIFY LOCATION, SIZE, NUMBER, AND ELEVATION OF ALL EXISTING UTILITIES.

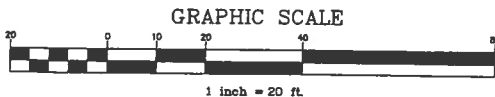
PRE-PSE JULY 2010

FIELD BOOKS	BM NO.	LOCATION	ELEV.	DATA	DRAWN BY	CHECKED BY	DATA	DRAWN BY	CHECKED BY	REV	DATE	DESCRIPTION	BY	REV	DATE	DESCRIPTION	BY
DESIGN: 3483, 3484 (LOUNSBURY)				BASE			TELEPHONE										
STAKING:				TOPOGRAPHY			ELECTRIC										
ASBUILT:				PROFILE			CABLE TV										
				SANITARY SEWER			DESIGN										
				STORM SEWER			QUANTITIES										
				WATER			MUN. FINAL CHECK										
				GAS													
CONTRACTOR:	BASIS OF DATUM: 1972 N.G.S. DATUM																
INSPECTOR:	MONUMENT NAME: GAAB39																
	ELEVATION: 62.20																
CONSTRUCTION RECORD	VERTICAL DATUM			PLAN CHECK				REVISIONS				CONSULTANT		SEAL			

LOUNSBURY & ASSOCIATES
Surveyors • Engineers • Planners
3300 A STREET NORTHDALE, ALABAMA 39118
(907) 772-5431

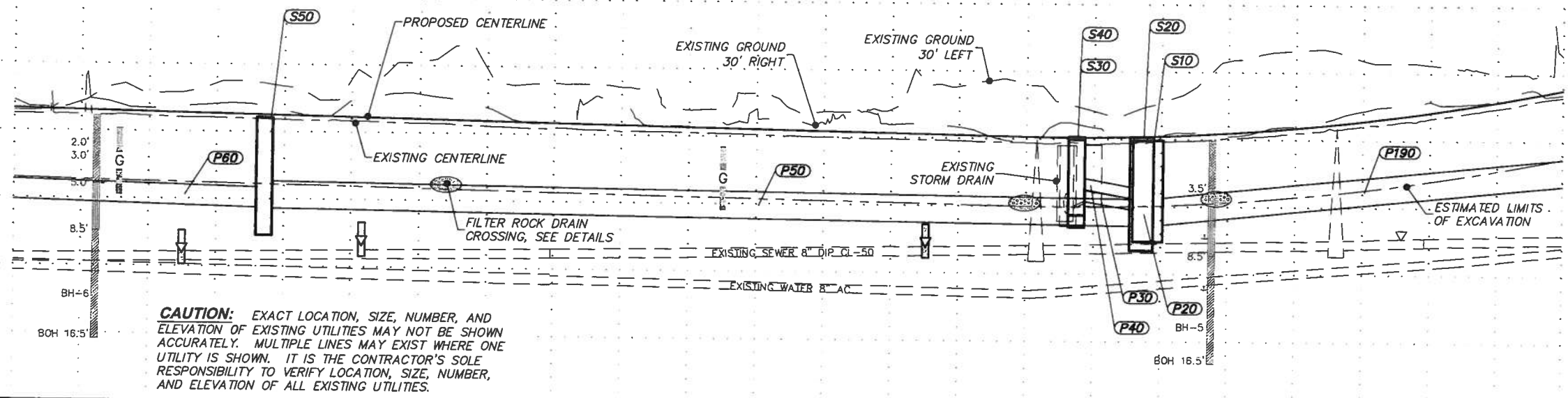
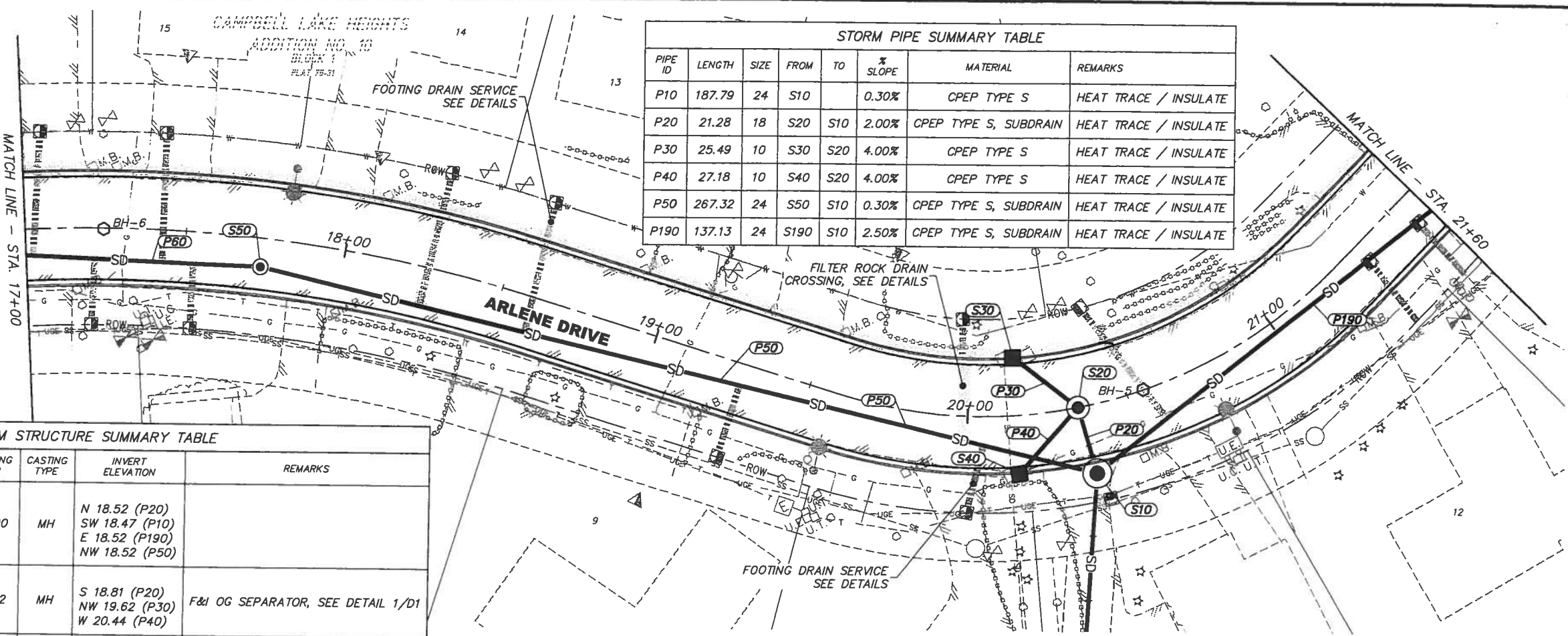
PRE-PS&E REVIEW COPY

PROJECT MANAGEMENT AND ENGINEERING DEPARTMENT			
PM&E PROJECT NO. 06-019			
ARLENE DRIVE/PELICAN DRIVE/PELICAN COURT/KINGFISHER DRIVE ROAD RECONSTRUCTION RID			
STORM DRAIN - ARLENE DRIVE			
STA 13+40 TO 17+00			
SCALE: H: 1"=20'	DATE: JULY 2010	GRIDS: 2427	SHEET SD2 of 54
V: 1"=5'	ACCT. NO. 08-028		



PIPE ID	LENGTH	SIZE	FROM	TO	% SLOPE	MATERIAL	REMARKS
P10	187.79	24	S10		0.30%	CPEP TYPE S	HEAT TRACE / INSULATE
P20	21.28	18	S20	S10	2.00%	CPEP TYPE S, SUBDRAIN	HEAT TRACE / INSULATE
P30	25.49	10	S30	S20	4.00%	CPEP TYPE S	HEAT TRACE / INSULATE
P40	27.18	10	S40	S20	4.00%	CPEP TYPE S	HEAT TRACE / INSULATE
P50	267.32	24	S50	S10	0.30%	CPEP TYPE S, SUBDRAIN	HEAT TRACE / INSULATE
P190	137.13	24	S190	S10	2.50%	CPEP TYPE S, SUBDRAIN	HEAT TRACE / INSULATE

ID	TYPE	STATION	OFFSET	CASTING TOP	CASTING TYPE	INVERT ELEVATION	REMARKS
S10	II	20+36.11	21.19 RT	24.90	MH	N 18.52 (P20) SW 18.47 (P10) E 18.52 (P190) NW 18.52 (P50)	
S20		20+34.26	0.00	25.12	MH	S 18.81 (P20) NW 19.62 (P30) W 20.44 (P40)	F&I OG SEPARATOR, SEE DETAIL 1/D1
S30	CB	20+15.00	18.00 LT.	24.94	CB	SE 20.44 (P30)	
S40	CB	20+15.00	18.00 RT.	25.12	CB	E 21.33 (P40)	
S50	I	17+74.24	8.92 RT.	26.03	MH	NW 19.36 (P60) SE 19.31 (P50)	



PRE-PSE JULY 2010

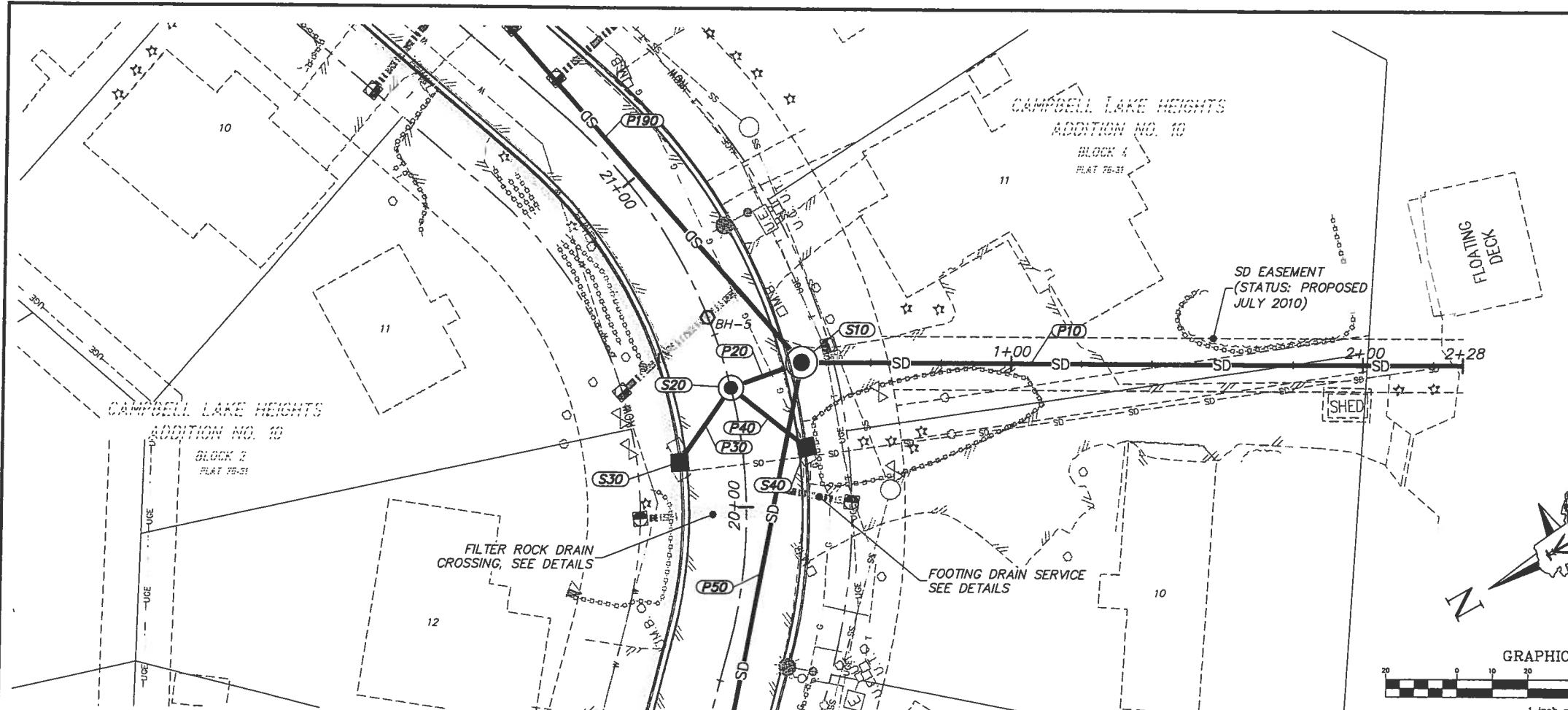
FIELD BOOKS	BM NO.	LOCATION	ELEV.	DATA	DESIGNED BY	CHECKED BY	DATA	DESIGNED BY	CHECKED BY	REV	DATE	DESCRIPTION	BY	REV	DATE	DESCRIPTION	BY
DESIGN: 3483, 3484 (LOUNSBURY)				BASE TOPOGRAPHY			TELEPHONE										
STAKING:				PROFILE			ELECTRIC										
ASBUILT:				SANITARY SEWER			CABLE TV										
CONTRACTOR:				STORM SEWER			DESIGN										
INSPECTOR:				WATER			QUANTITIES										
				GAS			MIN. FINAL CHECK										



PRE-PS&E REVIEW COPY

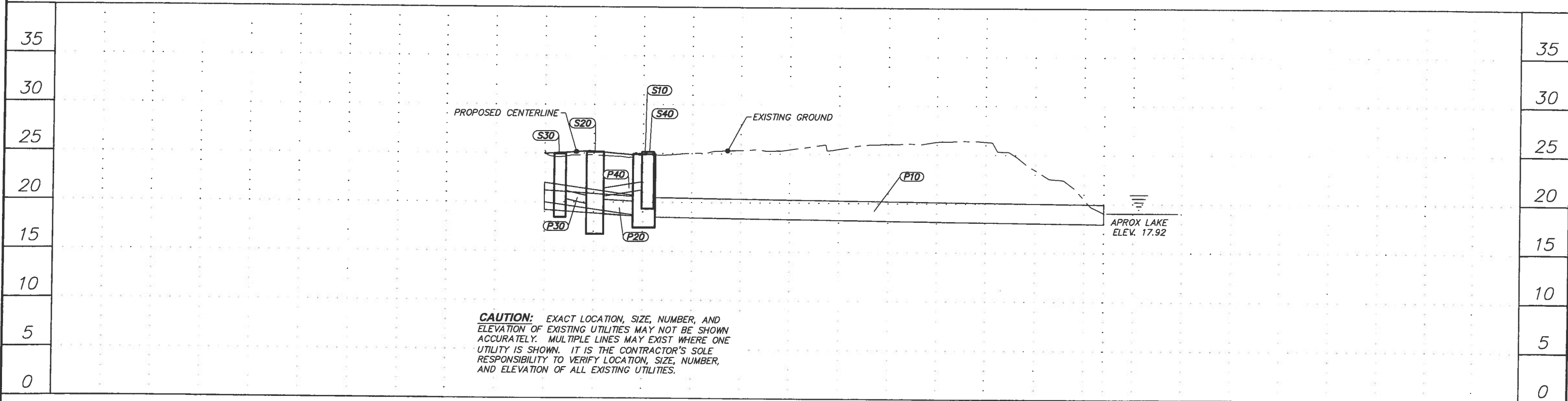
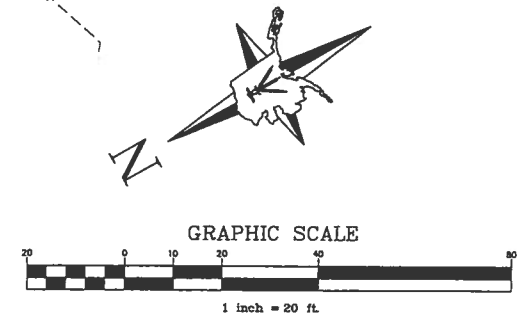


PROJECT MANAGEMENT AND ENGINEERING DEPARTMENT	
PM&E PROJECT NO. 06-019	
ARLENE DRIVE/PELICAN DRIVE/PELICAN COURT/KINGFISHER DRIVE ROAD RECONSTRUCTION RID	
STORM DRAIN - ARLENE DRIVE	
STA 17+00 TO 21+60	
SCALE: H: 1"=20'	DATE: JULY 2010
V: 1"=5'	ACCT. NO. 08-026
GRIDS: 2427	SHEET SD3 of 54



STORM STRUCTURE SUMMARY TABLE							
ID	TYPE	STATION	OFFSET	CASTING TOP	CASTING TYPE	INVERT ELEVATION	REMARKS
S10	II	20+36.11	21.19 RT	24.90	MH	N 18.52 (P20) SW 18.47 (P10) E 18.52 (P190) NW 18.52 (P50)	

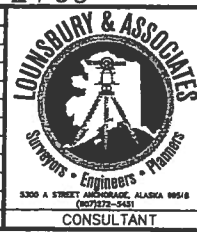
STORM PIPE SUMMARY TABLE							
PIPE ID	LENGTH	SIZE	FROM	TO	% SLOPE	MATERIAL	REMARKS
P10	187.79	24	S10		0.30%	CPEP TYPE S	HEAT TRACE / INSULATE



CAUTION: EXACT LOCATION, SIZE, NUMBER, AND ELEVATION OF EXISTING UTILITIES MAY NOT BE SHOWN ACCURATELY. MULTIPLE LINES MAY EXIST WHERE ONE UTILITY IS SHOWN. IT IS THE CONTRACTOR'S SOLE RESPONSIBILITY TO VERIFY LOCATION, SIZE, NUMBER, AND ELEVATION OF ALL EXISTING UTILITIES.

PRE-PSE JULY 2010

FIELD BOOKS	BM NO.	LOCATION	ELEV.	DATA	DRAWN BY	CHECKED BY	DATA	DRAWN BY	CHECKED BY	REV	DATE	DESCRIPTION	BY	REV	DATE	DESCRIPTION	BY
DESIGN: 3483, 3484 (LOUNSBURY)				BASE			TELEPHONE										
STAKING:				TOPOGRAPHY			ELECTRIC										
ASBUILT:				PROFILE			CABLE TV										
CONTRACTOR:				SANITARY SEWER			DESIGN										
INSPECTOR:				STORM SEWER			QUANTITIES										
				WATER			MUN. FINAL CHECK										
				GAS													



**PRE-PS&E
REVIEW
COPY**

SEAL

PROJECT MANAGEMENT AND ENGINEERING DEPARTMENT
 PM&E PROJECT NO. 06-019
 ARLENE DRIVE/PELICAN DRIVE/PELICAN COURT/KINGFISHER DRIVE ROAD RECONSTRUCTION RID
STORM DRAIN - OUTLET PIPE

SCALE: H: 1"=20'
 V: 1"=5'

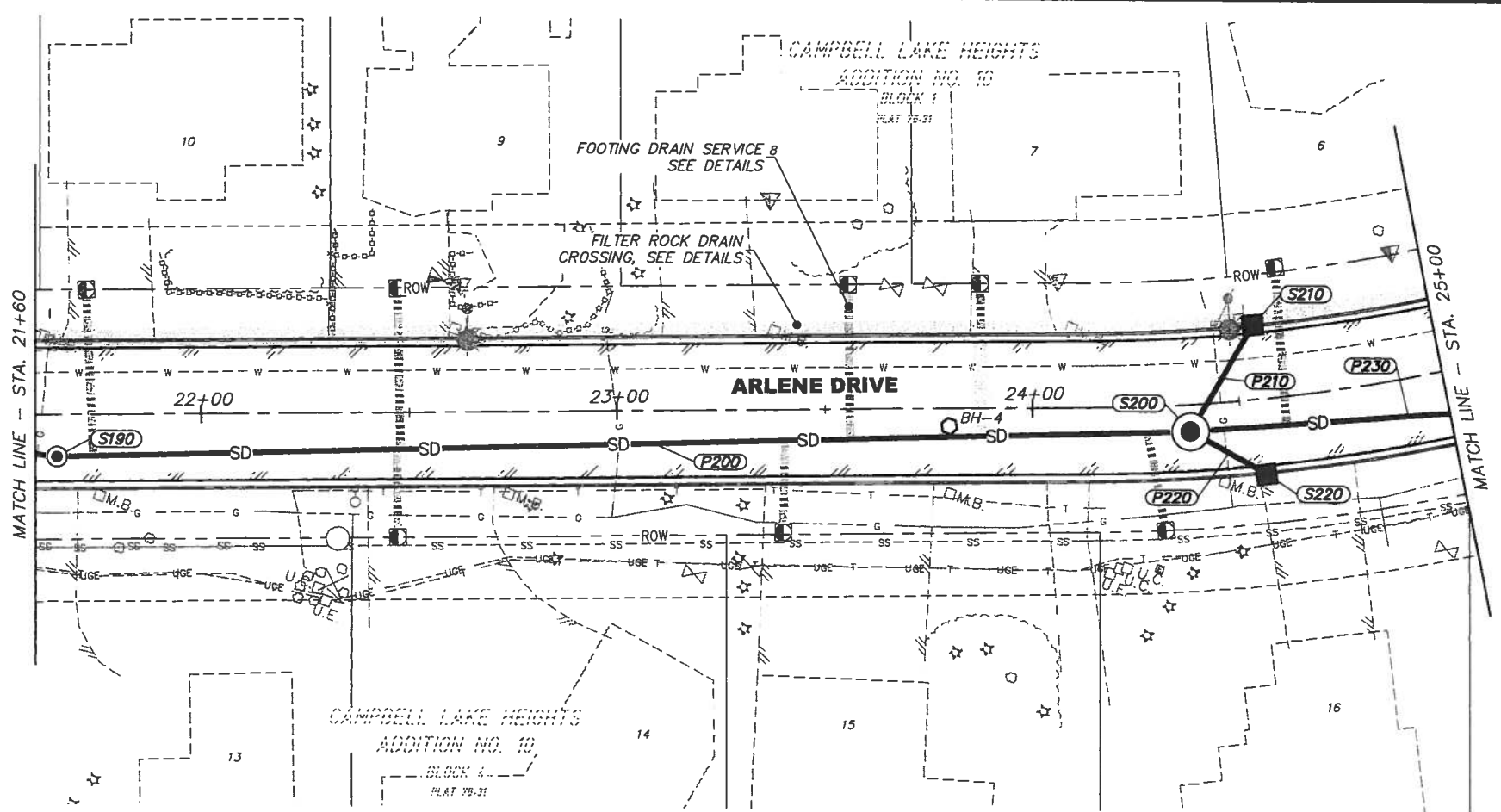
DATE: JULY 2010
 ACCT. NO. 06-026

GRIDS: 2427

SHEET SD4 of 54

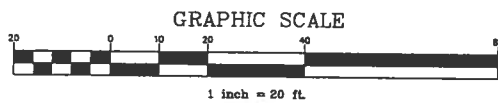
ID	TYPE	STATION	OFFSET	CASTING TOP	CASTING TYPE	INVERT ELEVATION	REMARKS
S190	I	21+65.28	10.14 RT	28.84	MH	E 22.15 (P200) W 21.80 (P190)	
S200		24+37.80	6.46 RT	35.44	MH	NE 28.63 (P230) W 27.49 (P200) N 30.15 (P210) E 30.50 (P220)	F&I OG SEPARATOR, SEE DETAIL 2/D1
S210	CB	24+55.00	18.00 LT	35.60	CB	S 31.10 (P210)	
S220	CB	24+54.91	18.00 RT	35.60	CB	W 31.10 (P220)	

PIPE ID	LENGTH	SIZE	FROM	TO	% SLOPE	MATERIAL	REMARKS
P200	272.87	18	S200	S190	2.00%	CPEP TYPE S, SUBDRAIN	
P210	29.77	12	S210	S200	4.00%	CPEP TYPE S, SUBDRAIN	
P220	21.04	10	S220	S200	4.00%	CPEP TYPE S	
P230	105.90	18	S230	S200	0.30%	CPEP TYPE S, SUBDRAIN	

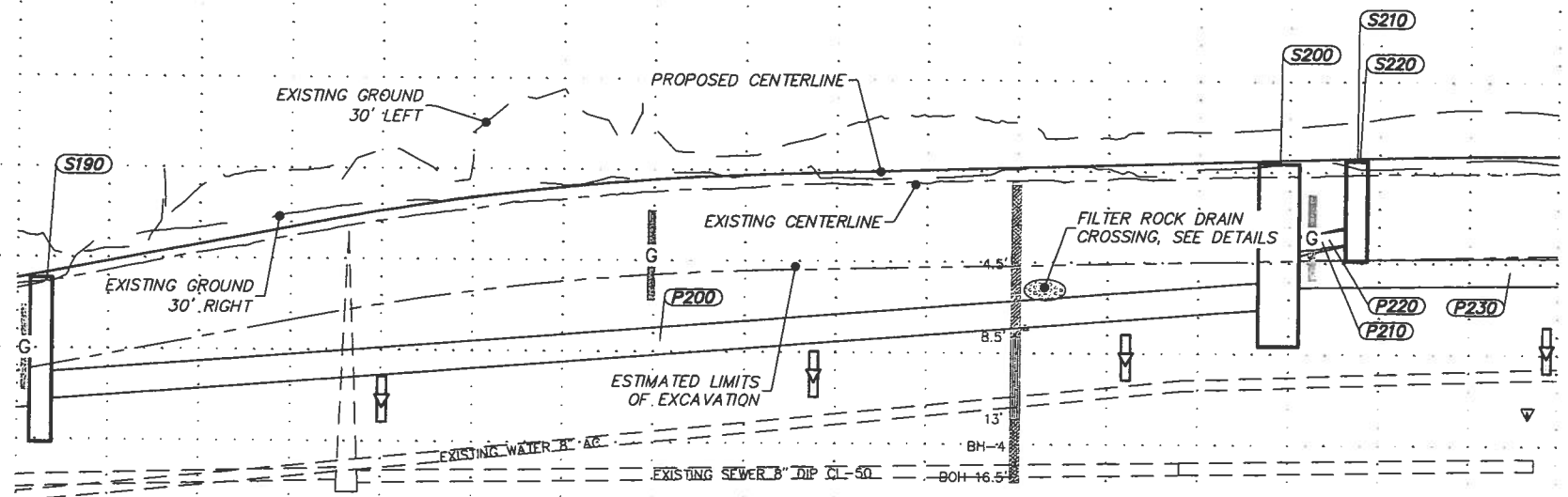


**BEFORE YOU DIG
CALL FOR FREE
UNDERGROUND
LOCATION**

Locate Call Center of Alaska
Statewide 1-800-478-3121
will notify subscribed utilities only. Other
utilities need to be contacted individually.



CAUTION: EXACT LOCATION, SIZE, NUMBER, AND ELEVATION OF EXISTING UTILITIES MAY NOT BE SHOWN ACCURATELY. MULTIPLE LINES MAY EXIST WHERE ONE UTILITY IS SHOWN. IT IS THE CONTRACTOR'S SOLE RESPONSIBILITY TO VERIFY LOCATION, SIZE, NUMBER, AND ELEVATION OF ALL EXISTING UTILITIES.

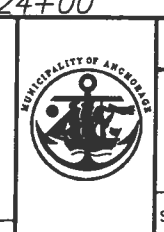


PRE-PSE JULY 2010

FIELD BOOKS	BM NO.	LOCATION	ELEV.	DATA	DRAWN BY	CHECKED BY	DATA	DRAWN BY	CHECKED BY	REV	DATE	DESCRIPTION	BY	REV	DATE	DESCRIPTION	BY	
DESIGN: 3483, 3484 (LOUNSBURY)				BASE			TELEPHONE											
STAKING:				TOPOGRAPHY			ELECTRIC											
ASBUILT:				PROFILE			CABLE TV											
				SANITARY SEWER			DESIGN											
				STORM SEWER			QUANTITIES											
				WATER			MON. FINAL CHECK											
				GAS														



**PRE-PS&E
REVIEW
COPY**



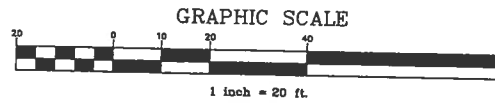
PROJECT MANAGEMENT AND ENGINEERING DEPARTMENT
 PM&E PROJECT NO. 06-019
 ARLENE DRIVE/PELICAN DRIVE/PELICAN COURT/KINGFISHER DRIVE
 ROAD RECONSTRUCTION RID
STORM DRAIN - ARLENE DRIVE
 STA 21+60 TO 25+00
 SCALE: H: 1"=20'
 V: 1"=5'
 DATE: JULY 2010
 ACCT. NO. 06-026
 GRIDS: 2427
 SHEET SD5 of 54

STORM STRUCTURE SUMMARY TABLE

ID	TYPE	STATION	OFFSET	CASTING TOP	CASTING TYPE	INVERT ELEVATION	REMARKS
S230	I	25+40.39	18.00 RT	35.74	CBMH	SW 28.93 (P230) NE 28.98 (P240)	F&I TOP INTAKE, SEE DETAIL 1/D2
S240	I	26+76.01	18.00 RT	35.45	CBMH	NE 29.44 (P260) SW 29.39 (P240) W 29.92 (P250)	F&I TOP INTAKE, SEE DETAIL 1/D2
S250	CB	26+40.00	18.00 LT	35.35	CB	E 30.85 (P250)	

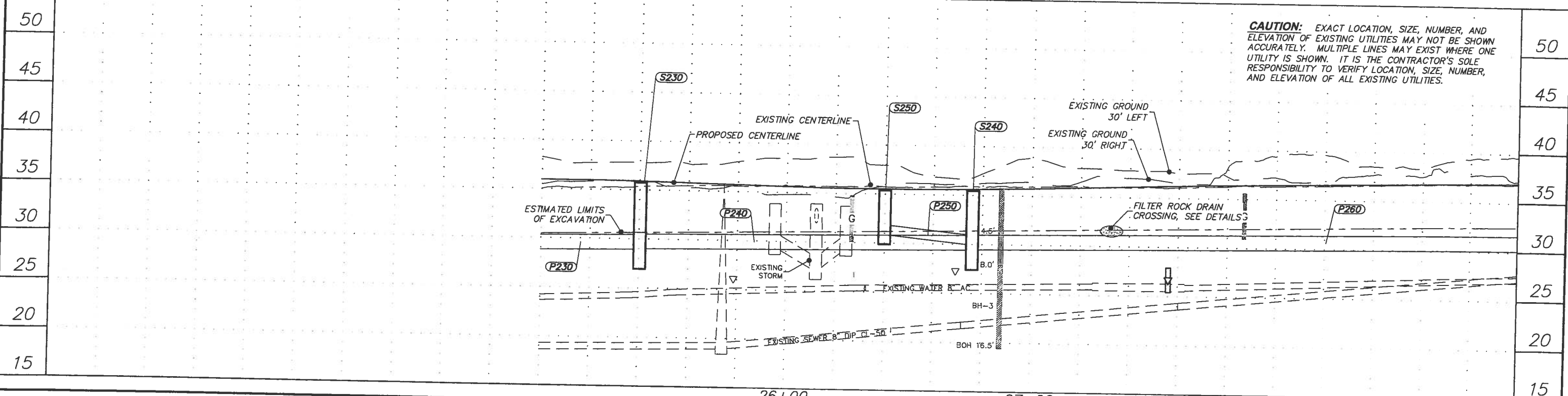
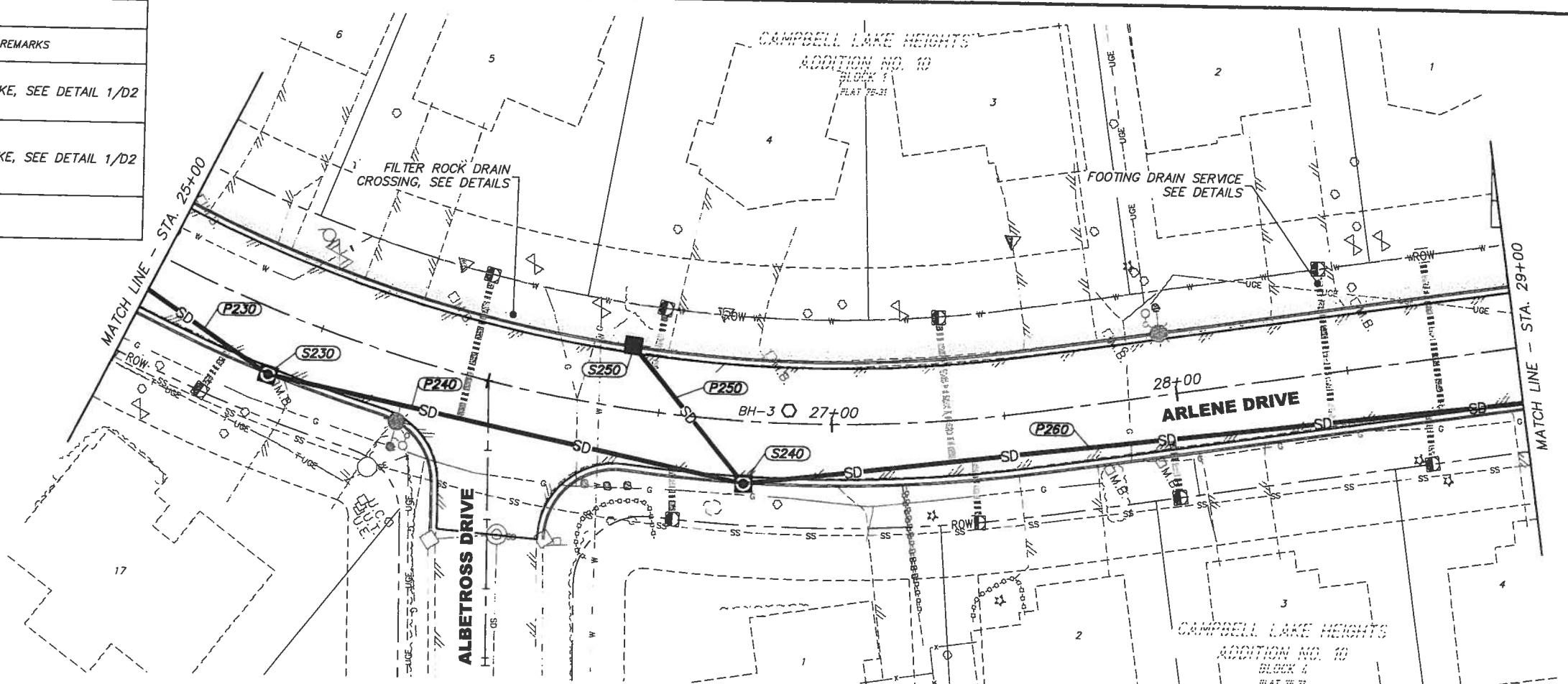
STORM PIPE SUMMARY TABLE

PIPE ID	LENGTH	SIZE	FROM	TO	% SLOPE	MATERIAL	REMARKS
P240	140.75	18	S240	S230	0.30%	CPEP TYPE S, SUBDRAIN	
P250	50.89	12	S250	S240	2.00%	CPEP TYPE S, SUBDRAIN	
P260	292.24	18	S260	S240	0.30%	CPEP TYPE S, SUBDRAIN	



BEFORE YOU DIG CALL FOR FREE UNDERGROUND LOCATION

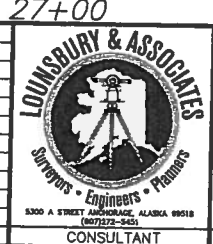
Locate Call Center of Alaska
Statewide 1-800-478-3121
will notify subsurface utilities only. Other utilities need to be contacted individually.



CAUTION: EXACT LOCATION, SIZE, NUMBER, AND ELEVATION OF EXISTING UTILITIES MAY NOT BE SHOWN ACCURATELY. MULTIPLE LINES MAY EXIST WHERE ONE UTILITY IS SHOWN. IT IS THE CONTRACTOR'S SOLE RESPONSIBILITY TO VERIFY LOCATION, SIZE, NUMBER, AND ELEVATION OF ALL EXISTING UTILITIES.

PRE-PSE JULY 2010

FIELD BOOKS	BM NO.	LOCATION	ELEV.	DATA	DRAWN BY	CHECKED BY	DATA	DRAWN BY	CHECKED BY	REV	DATE	DESCRIPTION	BY	REV	DATE	DESCRIPTION	BY
DESIGN: 3483, 3484 (LOUNSBURY)				BASE			TELEPHONE										
STAKING:				TOPOGRAPHY			ELECTRIC										
ASBUILT:				PROFILE			CABLE TV										
CONTRACTOR:				SANITARY SEWER			DESIGN										
INSPECTOR:				STORM SEWER			QUANTITIES										
				WATER			MUN. FINAL CHECK										
				GAS													



PRE-PS&E REVIEW COPY



PROJECT MANAGEMENT AND ENGINEERING DEPARTMENT

PM&E PROJECT NO. 06-D19

ARLENE DRIVE/PELICAN COURT/KINGFISHER DRIVE ROAD RECONSTRUCTION RID

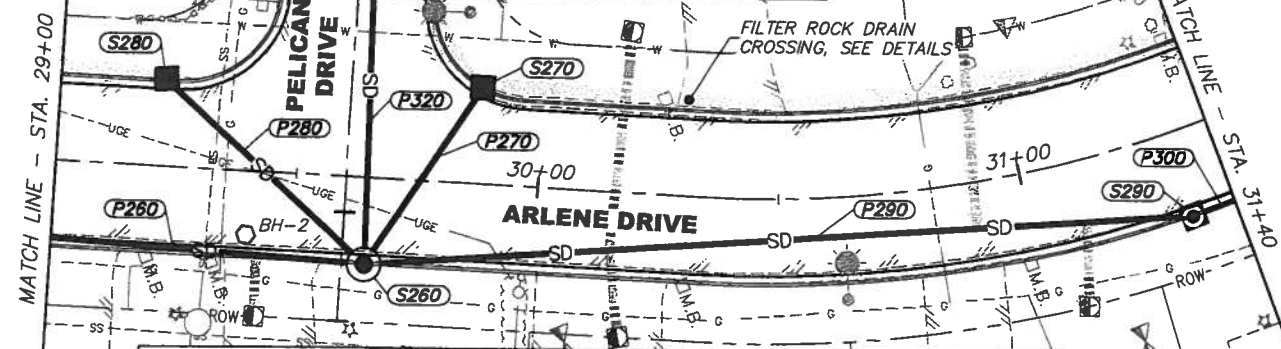
STORM DRAIN - ARLENE DRIVE

STA 25+00 TO 29+00

SCALE: H: 1"=20' DATE: JULY 2010 GRIDS: 2427
V: 1"=5' ACCT. NO. 08-026

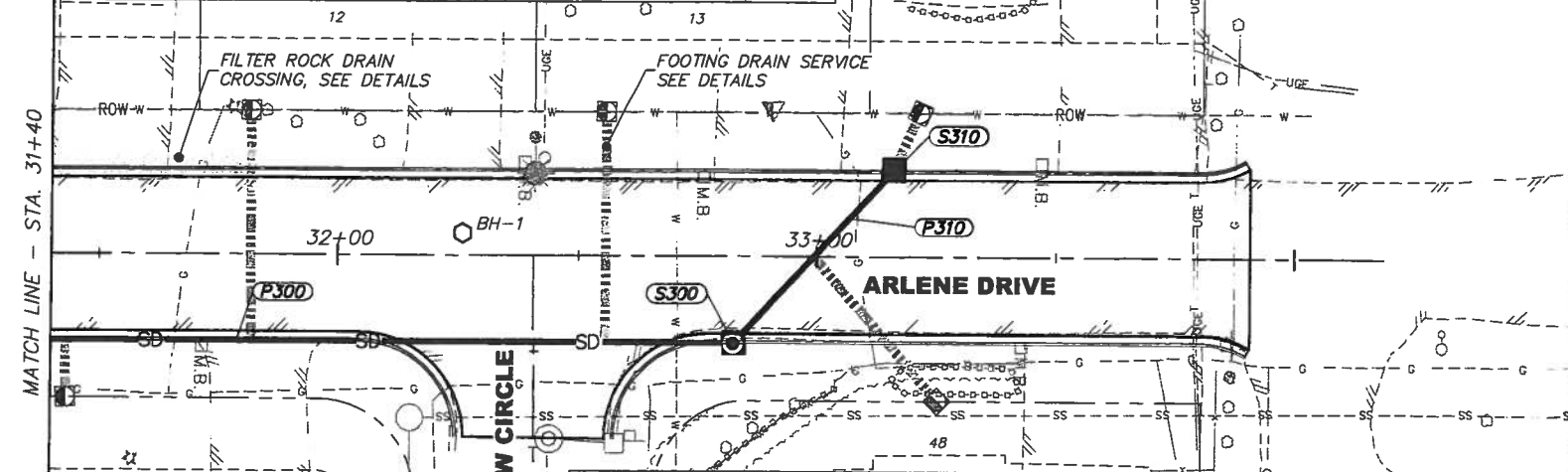
SHEET SD6 of 54

STORM PIPE SUMMARY TABLE							
PIPE ID	LENGTH	SIZE	FROM	TO	% SLOPE	MATERIAL	REMARKS
P270	44.16	12	S270	S260	4.00%	CPEP TYPE S, SUBDRAIN	
P280	56.43	12	S280	S260	4.00%	CPEP TYPE S, SUBDRAIN	
P290	171.81	12	S290	S260	3.00%	CPEP TYPE S, SUBDRAIN	



STORM STRUCTURE SUMMARY TABLE							
ID	TYPE	STATION	OFFSET	CASTING TOP	CASTING TYPE	INVERT ELEVATION	REMARKS
S260	II	29+65.13	18.00 RT	37.54	MH	W 30.36 (P320) N 30.36 (P290) SW 30.31 (P260) NW 31.96 (P270) SW 30.42 (P280)	
S270	CB	29+87.42	20.12 LT	38.03	CB	SE 33.53 (P270)	
S280	CB	29+21.68	18.00 LT	36.98	CB	NE 32.48 (P280)	
S290	I	31+31.38	18.00 RT	41.35	CBMH	N 35.44 (P300) S 35.36 (P290)	F&I TOP INTAKE, SEE DETAIL 1/D2

STORM PIPE SUMMARY TABLE							
PIPE ID	LENGTH	SIZE	FROM	TO	% SLOPE	MATERIAL	REMARKS
P300	151.83	12	S300	S290	2.00%	CPEP TYPE S, SUBDRAIN	
P310	49.09	12	S310	S300	4.00%	CPEP TYPE S, SUBDRAIN	

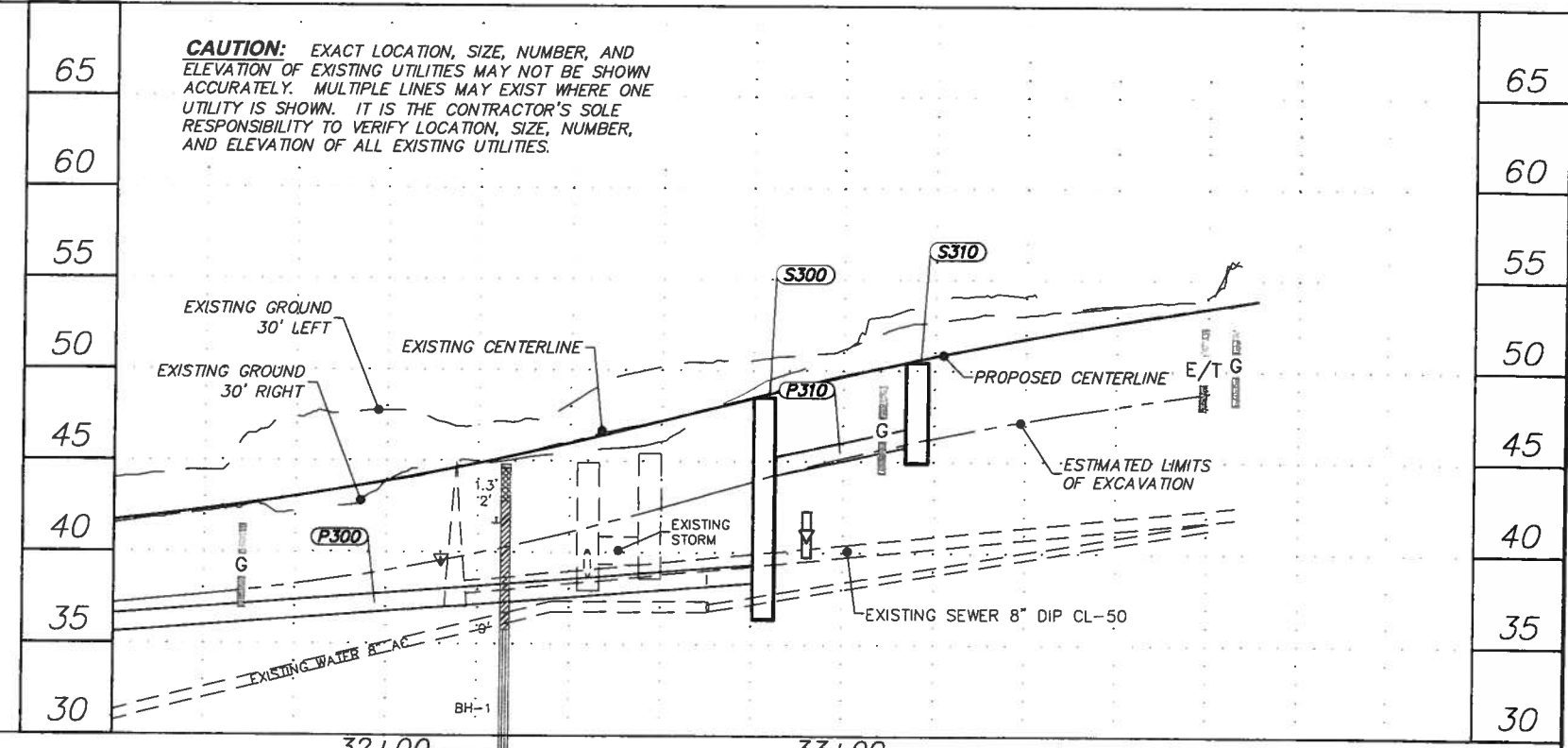
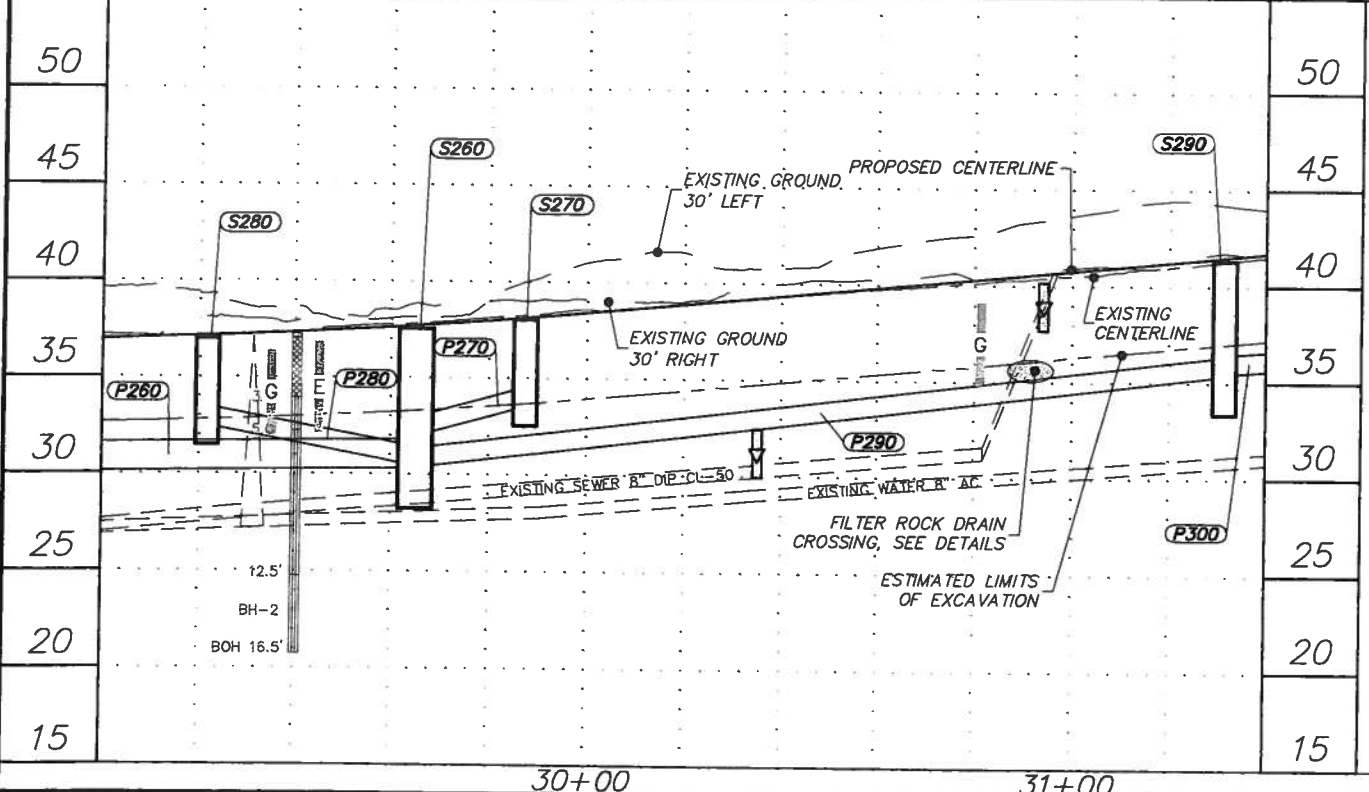


STORM STRUCTURE SUMMARY TABLE							
ID	TYPE	STATION	OFFSET	CASTING TOP	CASTING TYPE	INVERT ELEVATION	REMARKS
S300	I	32+82.63	18.00 RT	48.47	CBMH	NW 44.12 (P310) S 38.40 (P300)	F&I TOP INTAKE, SEE DETAIL 1/D2
S310	CB	33+16.00	18.00 LT	50.42	CB	SE 45.92 (P310)	

GRAPHIC SCALE
1 inch = 20 ft.

**BEFORE YOU DIG
CALL FOR FREE
UNDERGROUND
LOCATION**

Locate Call Center of Alaska
Statewide: 800-478-3121
will notify subscribed utilities only. Other
utilities need to be contacted individually.



CAUTION: EXACT LOCATION, SIZE, NUMBER, AND ELEVATION OF EXISTING UTILITIES MAY NOT BE SHOWN ACCURATELY. MULTIPLE LINES MAY EXIST WHERE ONE UTILITY IS SHOWN. IT IS THE CONTRACTOR'S SOLE RESPONSIBILITY TO VERIFY LOCATION, SIZE, NUMBER, AND ELEVATION OF ALL EXISTING UTILITIES.

PRE-PSE JULY 2010

FIELD BOOKS	BM NO.	LOCATION	ELEV.	DATA	DRY BY	CHECKED BY	DATA	DRY BY	CHECKED BY	REV	DATE	DESCRIPTION	BY	REV	DATE	DESCRIPTION	BY
DESIGN: 3483, 3484 (LOUNSBURY)				BASE			TELEPHONE										
STAKING:				TOPOGRAPHY			ELECTRIC										
ASBUILT:				PROFILE			CABLE TV										
				SANITARY SEWER			DESIGN										
				STORM SEWER			QUANTITIES										
				WATER			MUN. FINAL CHECK										
				GAS													



**PRE-PS&E
REVIEW
COPY**

SEAL



PROJECT MANAGEMENT AND ENGINEERING DEPARTMENT

PM&E PROJECT NO. 08-019

ARLENE DRIVE/PELICAN DRIVE/PALM COURT/KINGFISHER DRIVE
ROAD RECONSTRUCTION RID

STORM DRAIN - ARLENE DRIVE

STA 29+00 TO 33+91

SCALE: H: 1"=20'
V: 1"=5'

DATE: JULY 2010
ACCT. NO. 08-026

GRIDS: 2427

SHEET SD7 of 54