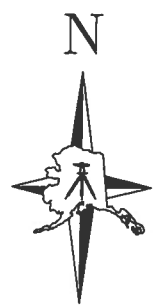
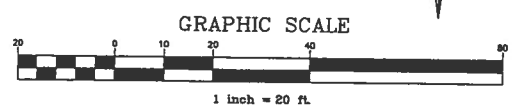


STORM STRUCTURE SUMMARY TABLE							
ID	TYPE	STATION	OFFSET	CASTING TOP	CASTING TYPE	INVERT ELEVATION	REMARKS
S540	I	63+19.25	16.00 RT	63.17	CBMH	E 56.50 (P550) W 55.63 (P540)	F&I TOP INTAKE, SEE DETAIL 1/D2

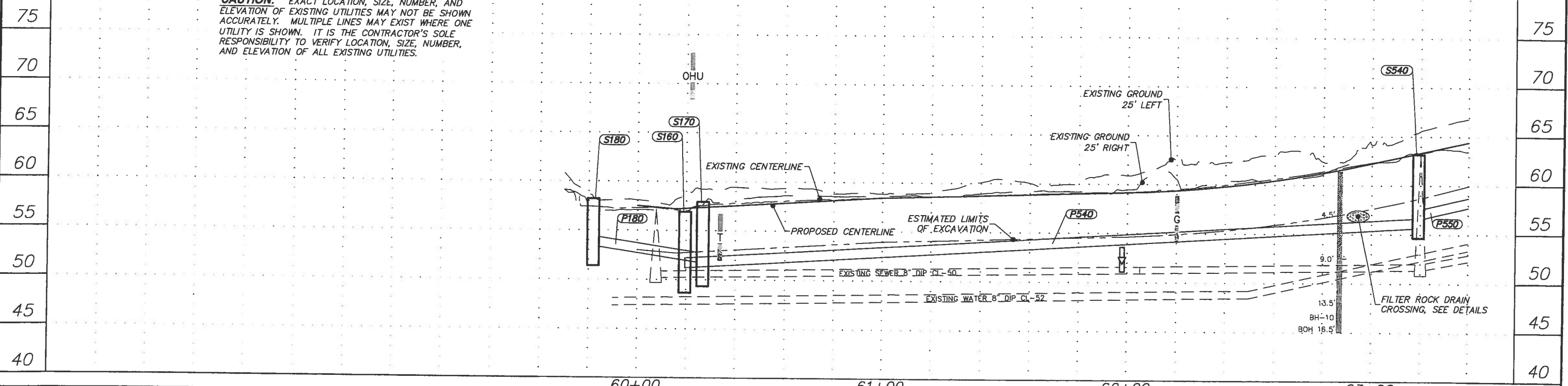
STORM PIPE SUMMARY TABLE							
PIPE ID	LENGTH	SIZE	FROM	TO	% SLOPE	MATERIAL	REMARKS
P540	299.65	12	S540	S160	1.49%	CPEP TYPE S, SUBDRAIN	

**BEFORE YOU DIG
CALL FOR FREE
UNDERGROUND
LOCATION**

Locate Call Center of Alaska
Statewide.....800-478-3121
will notify subscribed utilities only. Other
utilities need to be contacted individually.

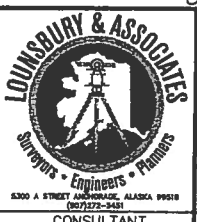


CAUTION: EXACT LOCATION, SIZE, NUMBER, AND ELEVATION OF EXISTING UTILITIES MAY NOT BE SHOWN ACCURATELY. MULTIPLE LINES MAY EXIST WHERE ONE UTILITY IS SHOWN. IT IS THE CONTRACTOR'S SOLE RESPONSIBILITY TO VERIFY LOCATION, SIZE, NUMBER, AND ELEVATION OF ALL EXISTING UTILITIES.



PRE-PSE JULY 2010

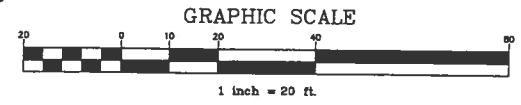
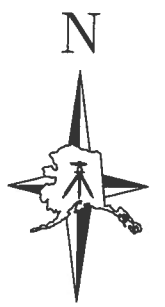
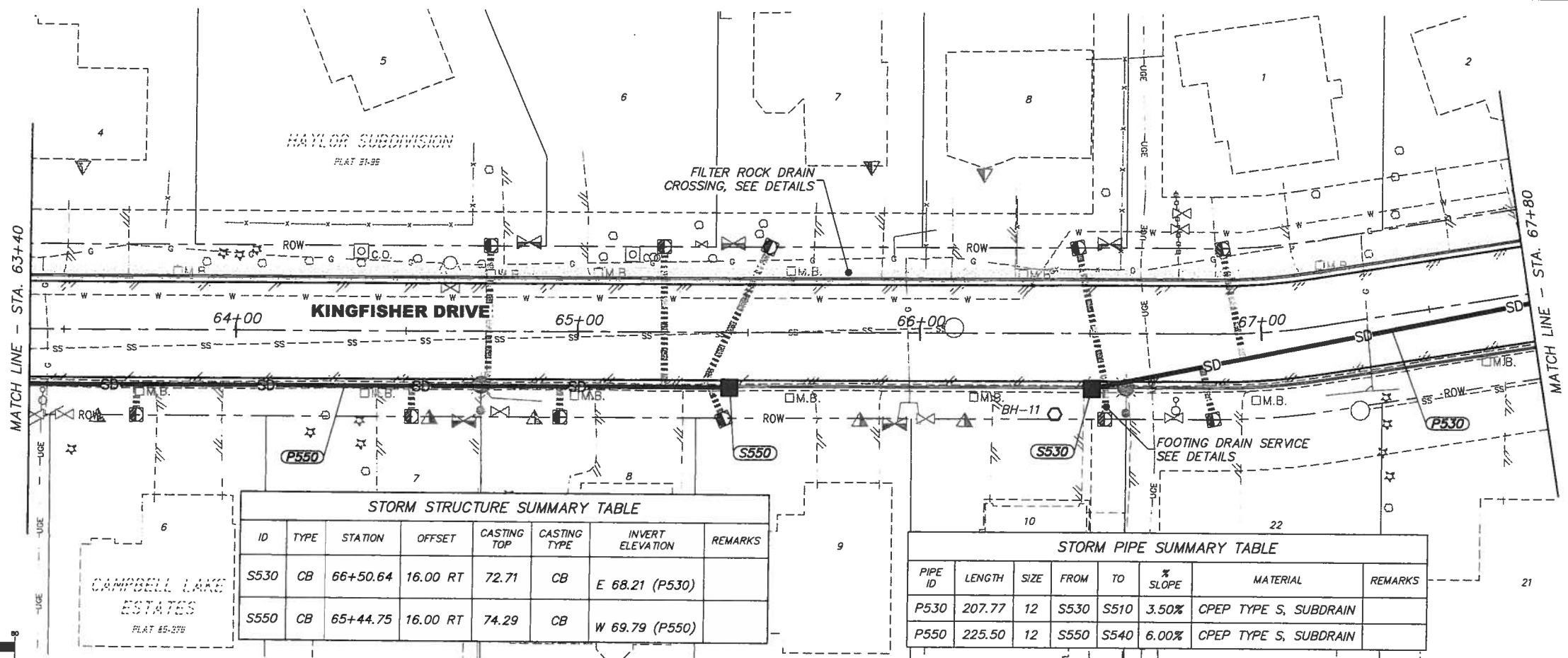
FIELD BOOKS	BM NO.	LOCATION	ELEV.	DATA	DATA	REV	DATE	DESCRIPTION	BY	REV	DATE	DESCRIPTION	BY
DESIGN: 3483, 3484 (LOUNSBURY)				BASE	TELEPHONE								
STAKING:				TOPOGRAPHY	ELECTRIC								
ASBUILT:				PROFILE	CABLE TV								
				SANITARY SEWER	DESIGN								
				STORM SEWER	QUANTITIES								
				WATER	MUN. FINAL CHECK								
				GAS									



**PRE-PS&E
REVIEW
COPY**



PROJECT MANAGEMENT AND ENGINEERING DEPARTMENT
PM&E PROJECT NO. 06-019
ARLENE DRIVE/PELICAN DRIVE/PELICAN COURT/KINGFISHER DRIVE ROAD RECONSTRUCTION RID
STORM DRAIN - KINGFISHER DRIVE
STA 59+70 TO 63+40
SCALE: H: 1"=20' DATE: JULY 2010 GRIDS: 2427
V: 1"=5' ACCT. NO. 08-028 SHEET SD8 of 54



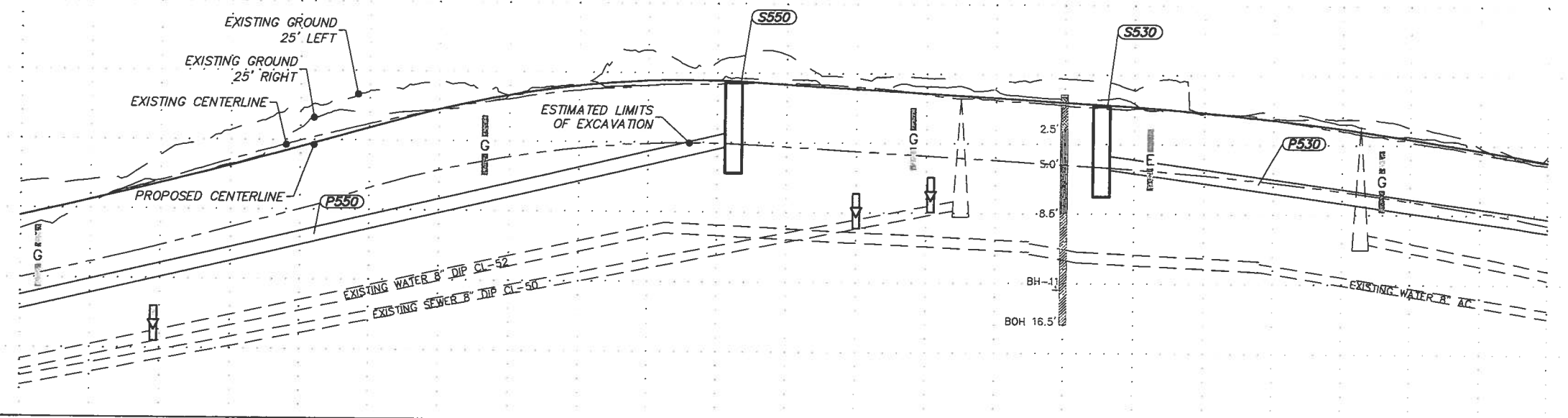
BEFORE YOU DIG CALL FOR FREE UNDERGROUND LOCATION

Locate Call Center of Alaska
Statewide 1-800-478-3121
will notify subscribed utilities only. Other utilities need to be contacted individually.

STORM STRUCTURE SUMMARY TABLE							
ID	TYPE	STATION	OFFSET	CASTING TOP	CASTING TYPE	INVERT ELEVATION	REMARKS
S530	CB	66+50.64	16.00 RT	72.71	CB	E 68.21 (P530)	
S550	CB	65+44.75	16.00 RT	74.29	CB	W 69.79 (P550)	

STORM PIPE SUMMARY TABLE							
PIPE ID	LENGTH	SIZE	FROM	TO	% SLOPE	MATERIAL	REMARKS
P530	207.77	12	S530	S510	3.50%	CPEP TYPE S, SUBDRAIN	
P550	225.50	12	S550	S540	6.00%	CPEP TYPE S, SUBDRAIN	

CAUTION: EXACT LOCATION, SIZE, NUMBER, AND ELEVATION OF EXISTING UTILITIES MAY NOT BE SHOWN ACCURATELY. MULTIPLE LINES MAY EXIST WHERE ONE UTILITY IS SHOWN. IT IS THE CONTRACTOR'S SOLE RESPONSIBILITY TO VERIFY LOCATION, SIZE, NUMBER, AND ELEVATION OF ALL EXISTING UTILITIES.



FIELD BOOKS	BM NO.	LOCATION	ELEV.	DATA	DRAWN BY	CHECKED BY	DATA	DRAWN BY	CHECKED BY	REV	DATE	DESCRIPTION	BY	REV	DATE	DESCRIPTION	BY
DESIGN: 3483, 3484 (LOUNSBURY)				BASE			TELEPHONE										
STAKING:				TOPOGRAPHY			ELECTRIC										
ASBUILT:				PROFILE			CABLE TV										
				SANITARY SEWER			DESIGN										
				STORM SEWER			QUANTITIES										
				WATER			MUN. FINAL CHECK										
CONTRACTOR:	BASIS OF DATUM: 1972 N.G.S. DATUM			GAS													
INSPECTOR:	MONUMENT NAME: GAAB39																
	ELEVATION: 62.20																
CONSTRUCTION RECORD	VERTICAL DATUM			PLAN CHECK	REVISIONS												



PRE-PS&E REVIEW COPY



PROJECT MANAGEMENT AND ENGINEERING DEPARTMENT

PM&E PROJECT NO. 06-019

ARLENE DRIVE/PELICAN DRIVE/PELICAN COURT/KINGFISHER DRIVE ROAD RECONSTRUCTION RID

STORM DRAIN - KINGFISHER DRIVE

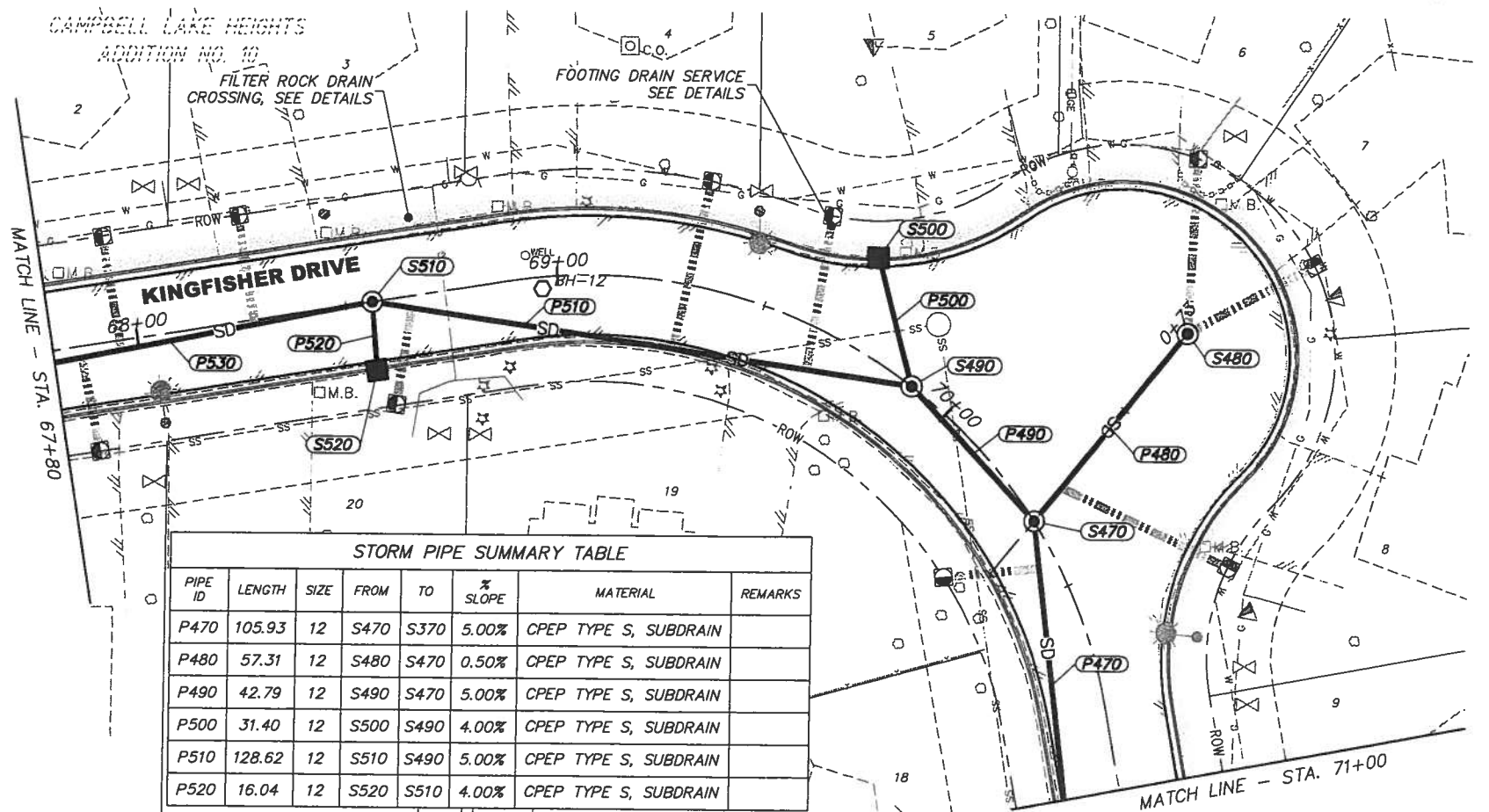
STA 63+40 TO 67+80

SCALE: H: 1"=20' DATE: JULY 2010 GRIDS: 2427
V: 1"=5' ACCT. NO. 08-028

SHEET SD9 of 54

PRE-PSE JULY 2010

STORM STRUCTURE SUMMARY TABLE							
ID	TYPE	STATION	OFFSET	CASTING TOP	CASTING TYPE	INVERT ELEVATION	REMARKS
S470	I	70+32.68	0.00	57.57	MH	NW 51.96 (P490) S 51.91 (P470) NE 51.96 (P480)	
S480	I	70+20.53	55.42 LT	57.90	MH	SW 52.23 (P480)	
S490	I	69+89.68	0.00	59.61	MH	W 53.95 (P510) SE 53.90 (P490) N 55.18 (P500)	
S500	CB	69+68.44	21.41 LT	60.78	CB	S 56.28 (P500)	
S510	I	68+56.32	0.00	65.66	MH	W 61.08 (P530) E 60.17 (P510) S 60.62 (P520)	
S520	CB	68+55.15	16.00 RT	65.60	CB	N 61.10 (P520)	

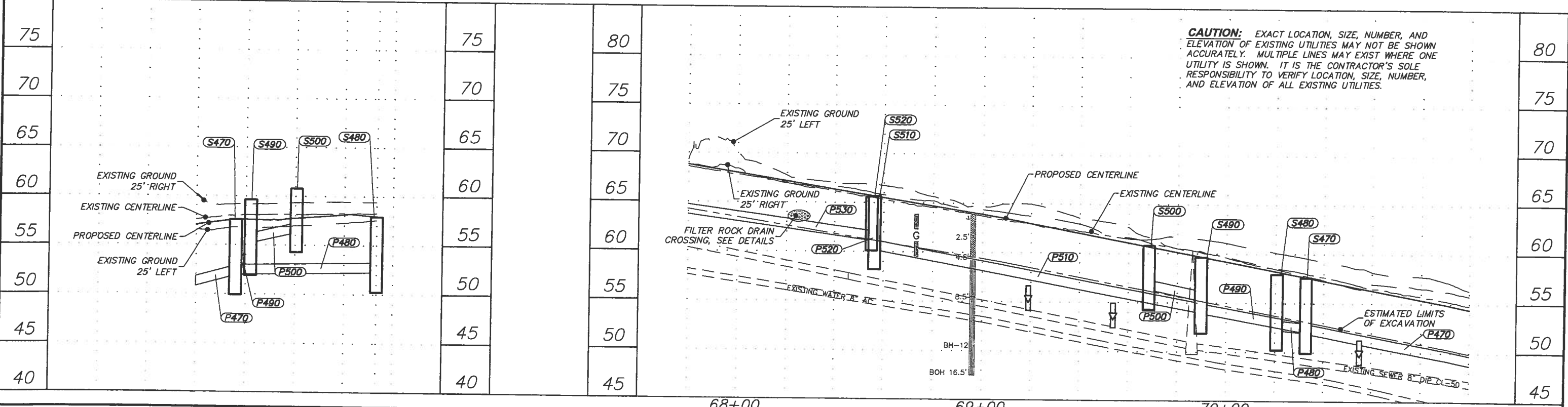
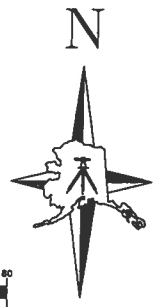
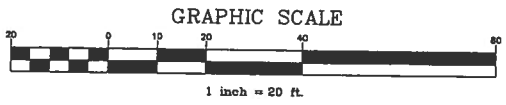


STORM PIPE SUMMARY TABLE							
PIPE ID	LENGTH	SIZE	FROM	TO	% SLOPE	MATERIAL	REMARKS
P470	105.93	12	S470	S370	5.00%	CPEP TYPE S, SUBDRAIN	
P480	57.31	12	S480	S470	0.50%	CPEP TYPE S, SUBDRAIN	
P490	42.79	12	S490	S470	5.00%	CPEP TYPE S, SUBDRAIN	
P500	31.40	12	S500	S490	4.00%	CPEP TYPE S, SUBDRAIN	
P510	128.62	12	S510	S490	5.00%	CPEP TYPE S, SUBDRAIN	
P520	16.04	12	S520	S510	4.00%	CPEP TYPE S, SUBDRAIN	



BEFORE YOU DIG
CALL FOR FREE
UNDERGROUND
LOCATION

Locate Call Center of Alaska
Statewide 800-478-3121
will notify subscribed utilities only. Other
utilities need to be contacted individually.



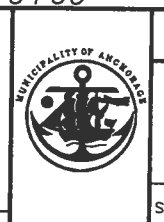
CAUTION: EXACT LOCATION, SIZE, NUMBER, AND ELEVATION OF EXISTING UTILITIES MAY NOT BE SHOWN ACCURATELY. MULTIPLE LINES MAY EXIST WHERE ONE UTILITY IS SHOWN. IT IS THE CONTRACTOR'S SOLE RESPONSIBILITY TO VERIFY LOCATION, SIZE, NUMBER, AND ELEVATION OF ALL EXISTING UTILITIES.

PRE-PSE JULY 2010

FIELD BOOKS	BM NO.	LOCATION	ELEV.	DATA	DRAWN BY	CHECKED BY	DATA	DRAWN BY	CHECKED BY	REV	DATE	DESCRIPTION	BY	REV	DATE	DESCRIPTION	BY
DESIGN: 3483, 3484 (LOUNSBURY)				BASE			TELEPHONE										
STAKING:				TOPOGRAPHY			ELECTRIC										
ASBUILT:				PROFILE			CABLE TV										
				SANITARY SEWER			DESIGN										
				STORM SEWER			QUANTITIES										
				WATER			MUN. FINAL CHECK										
				GAS													



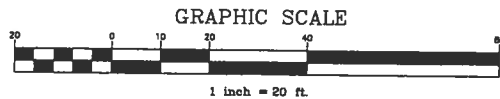
**PRE-PS&E
REVIEW
COPY**



PROJECT MANAGEMENT AND ENGINEERING DEPARTMENT
 PM&E PROJECT NO. 06-019
 ARLENE DRIVE/PELICAN DRIVE/PELICAN COURT/KINGFISHER DRIVE
 ROAD RECONSTRUCTION R/D
STORM DRAIN - KINGFISHER DRIVE
 STA 67+80 TO 71+00
 SCALE: H: 1"=20' DATE: JULY 2010 GRIDS: 2427 SHEET SD10 of 54
 V: 1"=5' ACCT. NO. 08-028

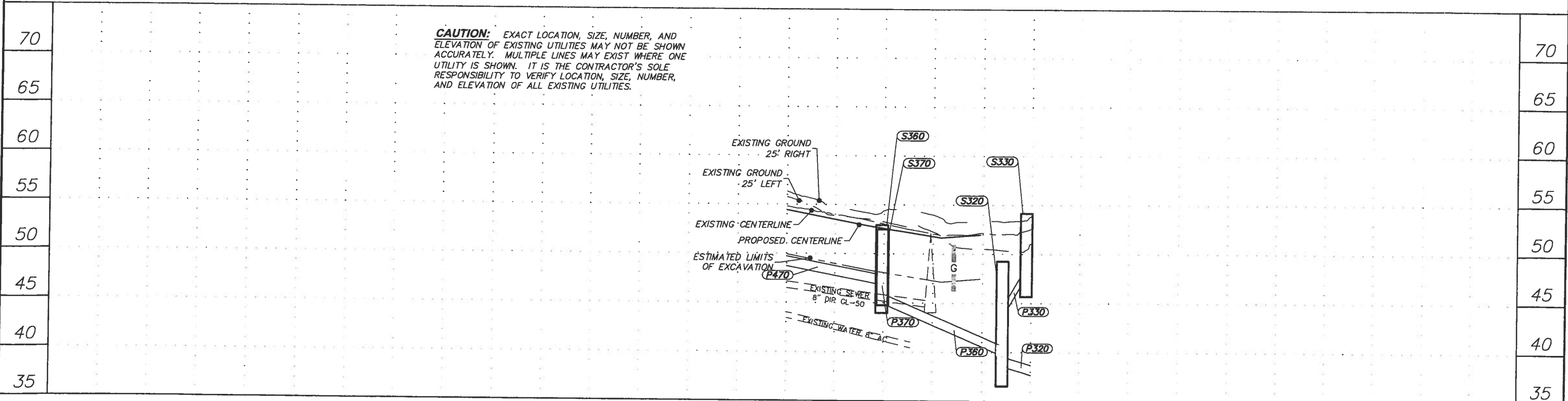
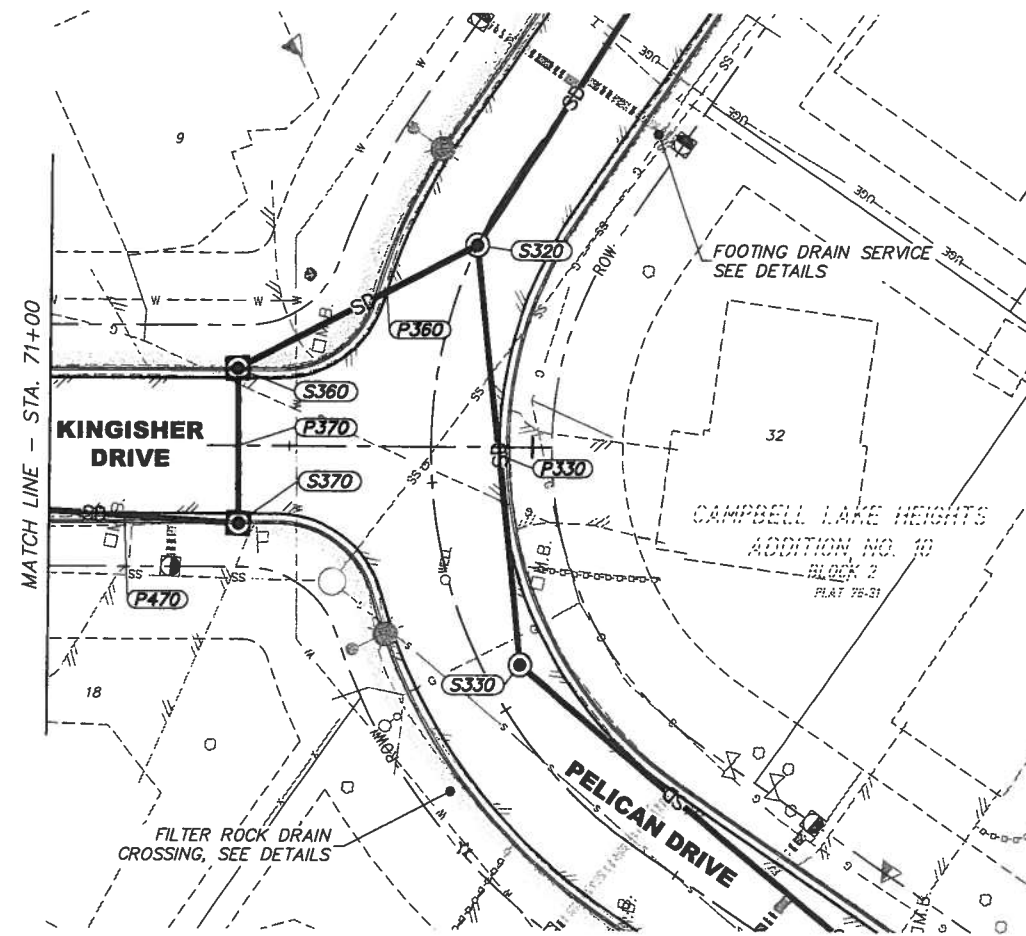
STORM STRUCTURE SUMMARY TABLE							
ID	TYPE	STATION	OFFSET	CASTING TOP	CASTING TYPE	INVERT ELEVATION	REMARKS
S360	I	71+39.26	16.00 LT	52.91	CBMH	SE 44.96 (P360) W 46.02 (P370)	F&I TOP INTAKE, SEE DETAIL 1/D2
S370	I	71+39.63	16.00 RT	52.47	CBMH	N 46.81 (P470) E 46.44 (P370)	F&I TOP INTAKE, SEE DETAIL 1/D2

STORM PIPE SUMMARY TABLE							
PIPE ID	LENGTH	SIZE	FROM	TO	% SLOPE	MATERIAL	REMARKS
P360	55.29	12	S360	S320	10.00%	CPEP TYPE S, SUBDRAIN	
P370	32.00	12	S370	S360	1.50%	CPEP TYPE S, SUBDRAIN	



**BEFORE YOU DIG
CALL FOR FREE
UNDERGROUND
LOCATION**

Locate Call Center of Alaska
Statewide.....800-478-3121
will notify subscribed utilities only. Other
utilities need to be contacted individually.



PRE-PSE JULY 2010

FIELD BOOKS	BM NO.	LOCATION	ELEV.	DATA	DRAWN BY	CHECKED BY	DATA	DRAWN BY	CHECKED BY	REV	DATE	DESCRIPTION	BY	REV	DATE	DESCRIPTION	BY
DESIGN: 3483, 3484 (LOUNSBURY)				BASE			TELEPHONE										
STAKING:				TOPOGRAPHY			ELECTRIC										
ASBUILT:				PROFILE			CABLE TV										
				SANITARY SEWER			DESIGN										
				STORM SEWER			QUANTITIES										
				WATER			MUN. FINAL CHECK										
CONTRACTOR:	BASIS OF DATUM: 1972 N.G.S. DATUM			GAS													
INSPECTOR:	MONUMENT NAME: GAAB39																
	ELEVATION: 62.20																
CONSTRUCTION RECORD	VERTICAL DATUM			PLAN CHECK			REVISIONS										

LOUNSBURY & ASSOCIATES
Engineers • Planners
5300 A STREET BLDG. ALASKA 99518
(907) 572-5451
CONSULTANT

**PRE-PS&E
REVIEW
COPY**

MUNICIPALITY OF ANCHORAGE

PROJECT MANAGEMENT AND ENGINEERING DEPARTMENT

PM&E PROJECT NO. 06-019

ARLENE DRIVE/PELICAN DRIVE/PELICAN COURT/KINGFISHER DRIVE ROAD RECONSTRUCTION RID

STORM DRAIN - KINGFISHER DRIVE

STA 71+00 TO 72+00

SCALE: H: 1"=20'
V: 1"=5'

DATE: JULY 2010
ACCT. NO. 08-026

GRDS: 2427

SHEET SD11 of 54