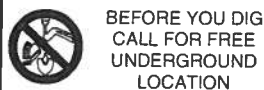


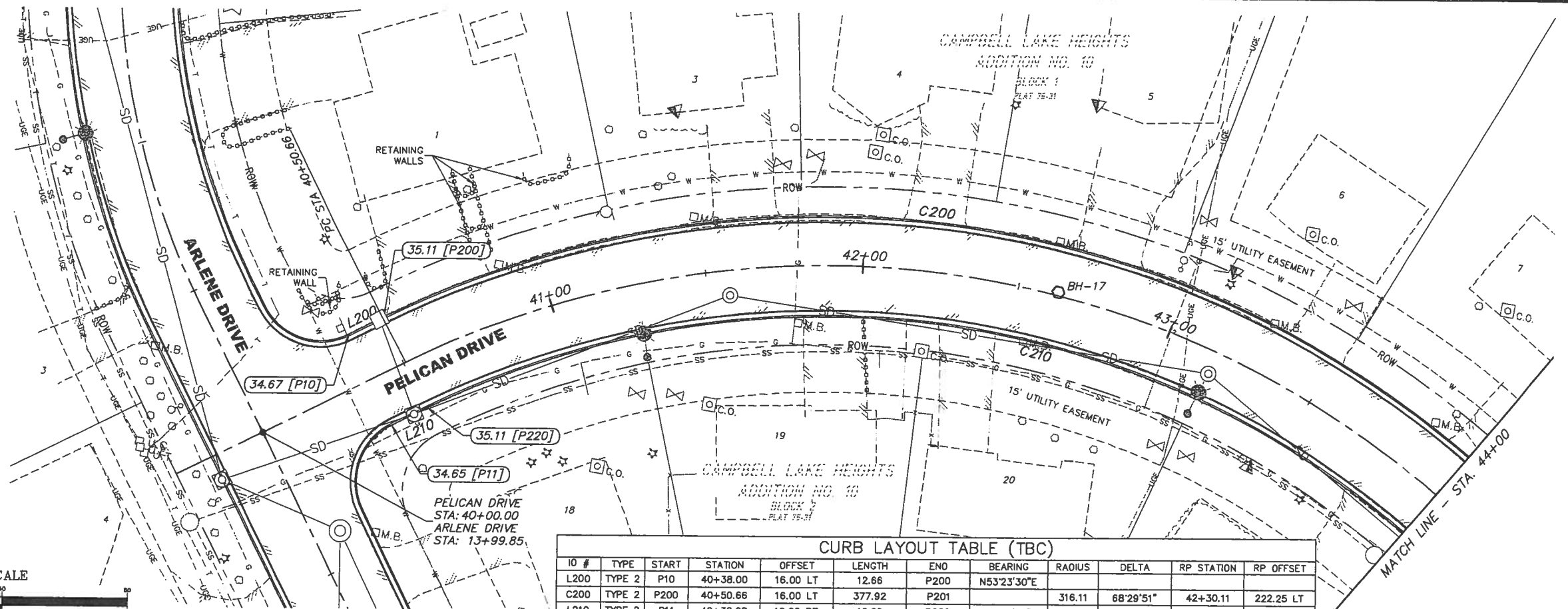
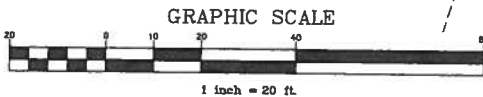
**KEY NOTES:**

- Ⓐ ADJUST MAINLINE OR FIRE HYDRANT VALVE BOX TO FINISH GRADE
- Ⓑ LOCATE AND ADJUST SERVICE KEY BOX TO FINISH GRADE
- Ⓒ ADJUST MANHOLE RING TO FINISH GRADE
- Ⓓ ADJUST CLEANOUT TO FINISH GRADE



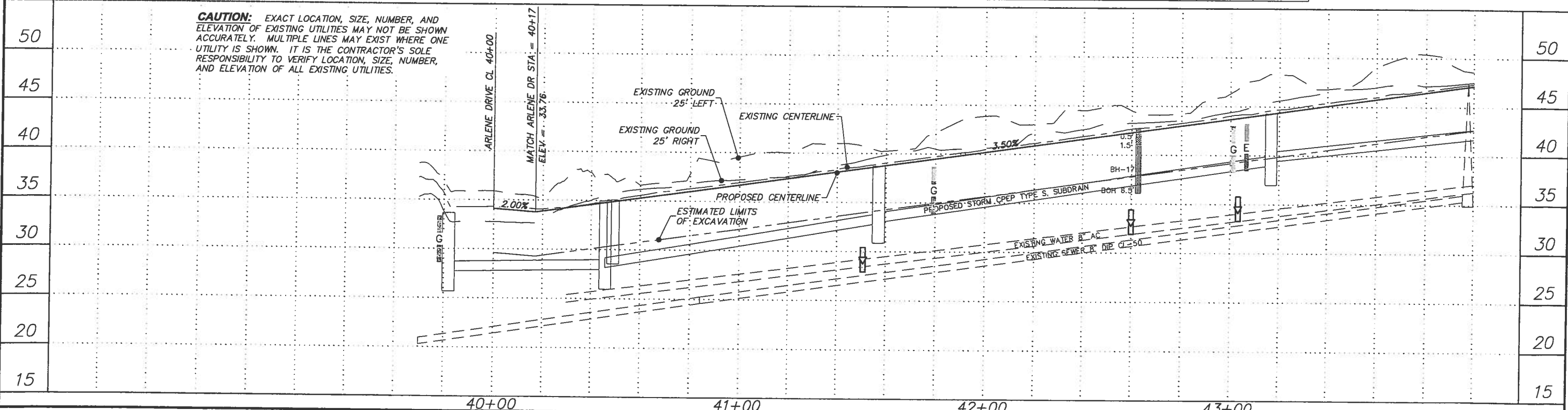
BEFORE YOU DIG  
CALL FOR FREE  
UNDERGROUND  
LOCATION

Locate Call Center of Alaska  
Statewide... 800-478-3121  
will notify subscribed utilities only. Other  
utilities need to be contacted individually.



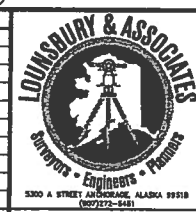
IO #	TYPE	START	STATION	OFFSET	LENGTH	END	BEARING	RADIUS	DELTA	RP STATION	RP OFFSET
L200	TYPE 2	P10	40+38.00	16.00 LT	12.66	P200	N53°23'30"E				
C200	TYPE 2	P200	40+50.66	16.00 LT	377.92	P201		316.11	68°29'51"	42+30.11	222.25 LT
L210	TYPE 2	P11	40+38.00	16.00 RT	12.66	P220	N53°23'30"E				
C210	TYPE 2	P220	40+50.66	16.00 RT	339.51	P221		284.12	68°27'59"	44+10.32	300.11 RT

**CAUTION:** EXACT LOCATION, SIZE, NUMBER, AND ELEVATION OF EXISTING UTILITIES MAY NOT BE SHOWN ACCURATELY. MULTIPLE LINES MAY EXIST WHERE ONE UTILITY IS SHOWN. IT IS THE CONTRACTOR'S SOLE RESPONSIBILITY TO VERIFY LOCATION, SIZE, NUMBER, AND ELEVATION OF ALL EXISTING UTILITIES.



PRE-PSE JULY 2010

FIELD BOOKS	BM NO.	LOCATION	ELEV.	DATA	DRAWN BY	CHECKED BY	DATA	DRAWN BY	CHECKED BY	REV	DATE	DESCRIPTION	BY	REV	DATE	DESCRIPTION	BY
DESIGN: 3483, 3484 (LOUNSBURY)				BASE			TELEPHONE										
STAKING:				TOPOGRAPHY			ELECTRIC										
ASBUILT:				PROFILE			CABLE TV										
				SANITARY SEWER			DESIGN										
				STORM SEWER			QUANTITIES										
				WATER			MUN. FINAL CHECK										
				GAS													



**PRE-PS&E  
REVIEW  
COPY**

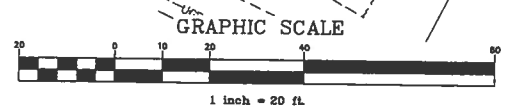


PROJECT MANAGEMENT AND ENGINEERING DEPARTMENT  
PM&E PROJECT NO. 06-019  
ARLENE DRIVE/PELICAN DRIVE/PELICAN COURT/KINGFISHER DRIVE ROAD RECONSTRUCTION RID  
**STREET IMPROVEMENTS - PELICAN DRIVE**  
STA 39+70 TO 44+00  
SCALE: H: 1"=20'  
V: 1"=5'  
DATE: JULY 2010  
ACCT. NO. 08-026  
GRIDS: 2427  
SHEET ST11 of 54

**KEY NOTES:**

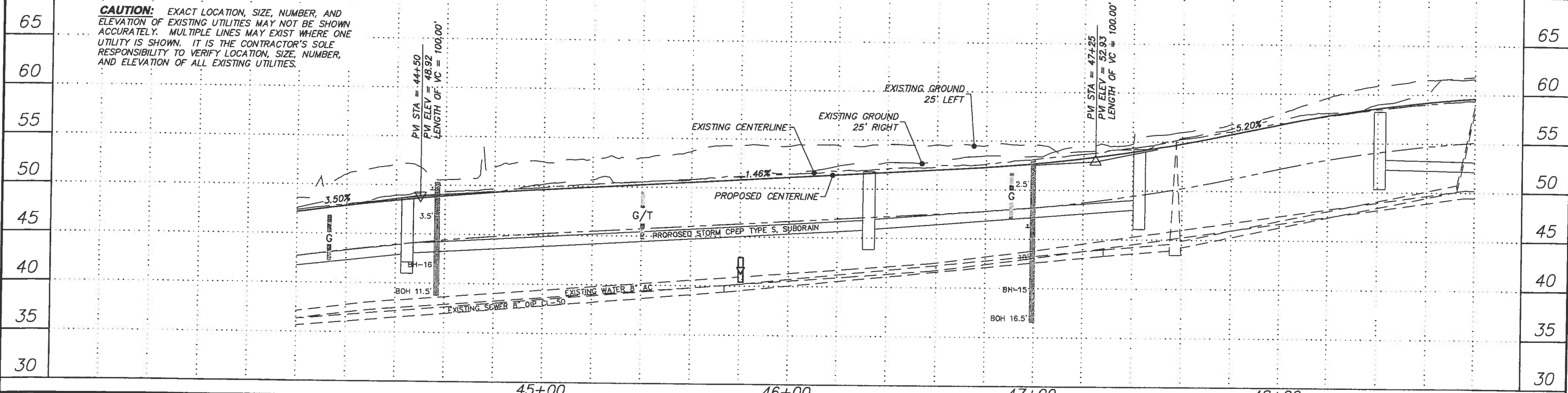
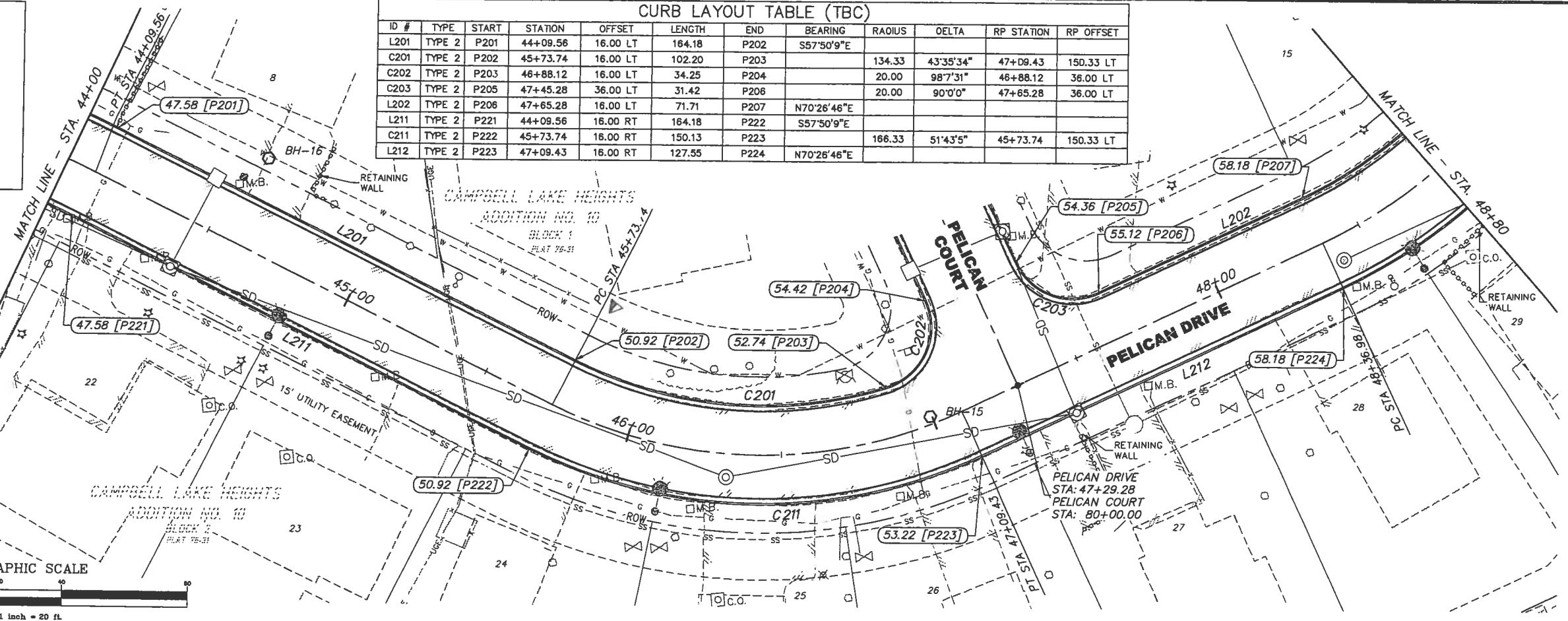
- Ⓐ ADJUST MAINLINE OR FIRE HYDRANT VALVE BOX TO FINISH GRADE
- Ⓑ LOCATE AND ADJUST SERVICE KEY BOX TO FINISH GRADE
- Ⓒ ADJUST MANHOLE RING TO FINISH GRADE
- Ⓓ ADJUST CLEANOUT TO FINISH GRADE

ID #	TYPE	START	STATION	OFFSET	LENGTH	END	BEARING	RAIUS	DELTA	RP STATION	RP OFFSET
L201	TYPE 2	P201	44+09.56	16.00 LT	164.18	P202	S57°50'9"E				
C201	TYPE 2	P202	45+73.74	16.00 LT	102.20	P203		134.33	43°35'34"	47+09.43	150.33 LT
C202	TYPE 2	P203	46+88.12	16.00 LT	34.25	P204		20.00	98°7'31"	46+88.12	36.00 LT
C203	TYPE 2	P205	47+45.28	36.00 LT	31.42	P206		20.00	90°0'0"	47+85.28	36.00 LT
L202	TYPE 2	P206	47+65.28	16.00 LT	71.71	P207	N70°26'46"E				
L211	TYPE 2	P221	44+09.56	16.00 RT	164.18	P222	S57°50'9"E				
C211	TYPE 2	P222	45+73.74	16.00 RT	150.13	P223		166.33	51°43'5"	45+73.74	150.33 LT
L212	TYPE 2	P223	47+09.43	16.00 RT	127.55	P224	N70°26'46"E				



**BEFORE YOU DIG CALL FOR FREE UNDERGROUND LOCATION**

Locate Call Center of Alaska  
Statewide... 800-478-3121  
will notify subscribed utilities only. Other utilities need to be contacted individually.



PRE-PSE JULY 2010

FIELD BOOKS	BM NO.	LOCATION	ELEV.	DATA	DRAWN BY	CHECKED BY	DATA	DRAWN BY	CHECKED BY	REV	DATE	DESCRIPTION	BY	REV	DATE	DESCRIPTION	BY	
DESIGN: 3483, 3484 (LOUNSBURY)				BASE TOPOGRAPHY			TELEPHONE											
STAKING:				PROFILE			ELECTRIC											
ASBUILT:				SANITARY SEWER			CABLE TV											
CONTRACTOR:				STORM SEWER			DESIGN											
INSPECTOR:				WATER			QUANTITIES											
				GAS			MUN. FINAL CHECK											



**PRE-PS&E REVIEW COPY**



PROJECT MANAGEMENT AND ENGINEERING DEPARTMENT

PM&E PROJECT NO. 06-019

ARLENE DRIVE/PELICAN DRIVE/PELICAN COURT/KINGFISHER DRIVE ROAD RECONSTRUCTION RID

**STREET IMPROVEMENTS - PELICAN DRIVE**

STA 44+00 TO 48+80

SCALE: H: 1"=20'  
V: 1"=5'

DATE: JULY 2010  
ACCT. NO. 08-028

GRIDS: 2427

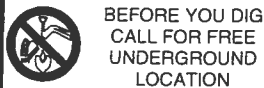
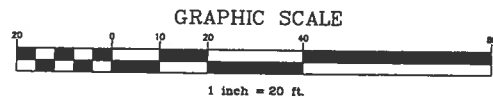
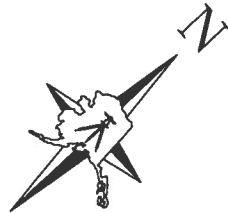
SHEET ST12 of 54

CURB LAYOUT TABLE (TBC)

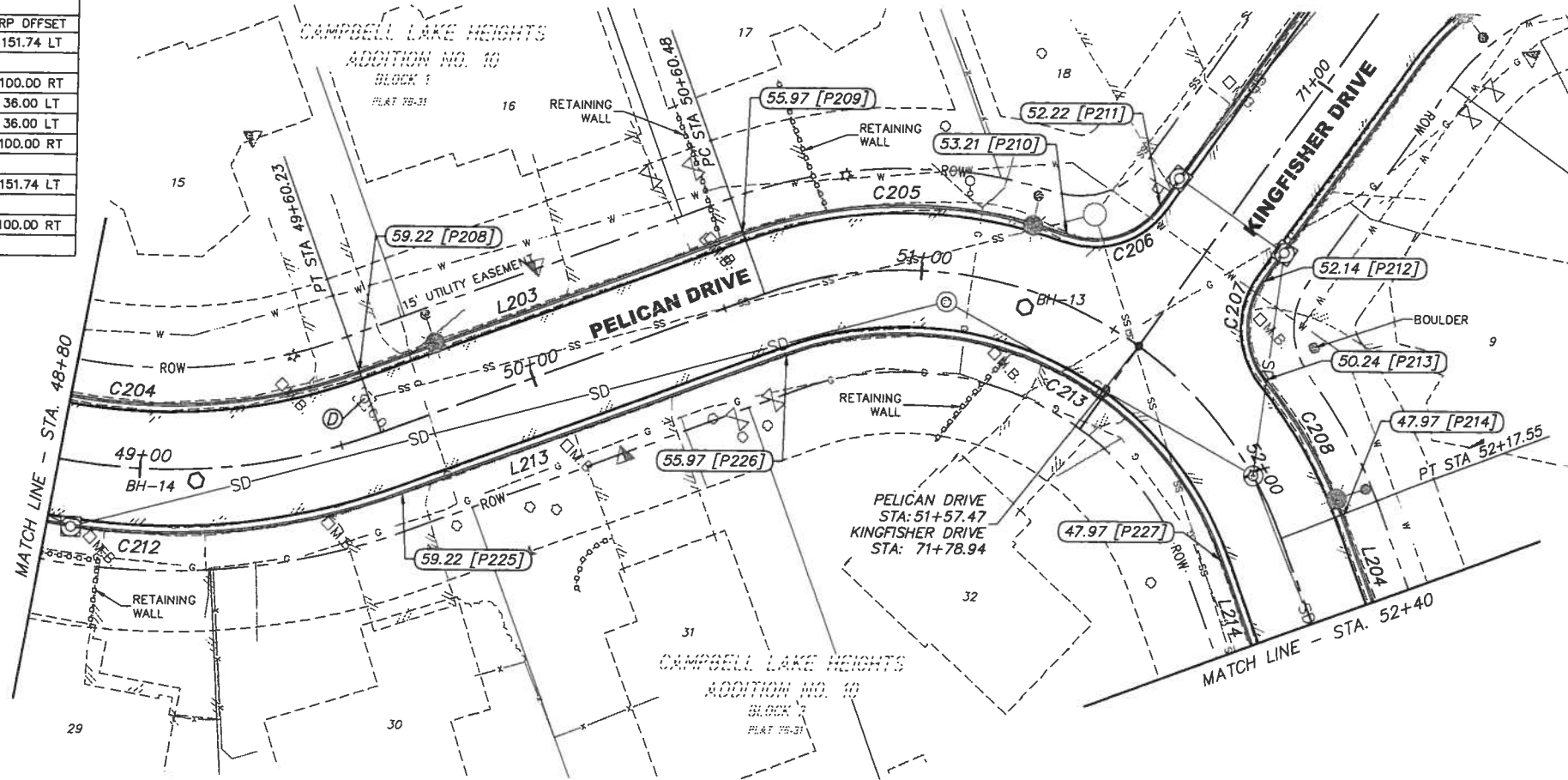
ID #	TYPE	START	STATION	OFFSET	LENGTH	END	BEARING	RADIUS	DELTA	RP STATION	RP OFFSET
C204	TYPE 2	P207	48+36.98	16.00 LT	110.25	P208		135.74	46°32'17"	49+60.23	151.74 LT
L203	TYPE 2	P208	49+60.23	16.00 LT	100.24	P209	N23°54'29"E				
C205	TYPE 2	P209	50+60.48	16.00 LT	81.41	P210		116.00	40°12'41"	50+60.48	100.00 RT
C206	TYPE 2	P210	51+30.66	16.00 LT	26.07	P211		20.00	74°41'45"	51+30.66	36.00 LT
C207	TYPE 2	P212	51+69.59	32.11 LT	26.04	P213		20.00	74°36'19"	51+84.24	36.00 LT
C208	TYPE 2	P213	51+84.24	16.00 LT	38.65	P214		116.00	19°5'23"	50+60.48	100.00 RT
L204	TYPE 2	P214	52+17.55	16.00 LT	137.02	P23	S66°5'31"E				
C212	TYPE 2	P224	48+36.98	16.00 RT	136.25	P225		167.74	46°32'17"	49+60.23	151.74 LT
L213	TYPE 2	P225	49+60.23	16.00 RT	100.24	P226	N23°54'29"E				
C213	TYPE 2	P226	50+60.48	16.00 RT	131.95	P227		84.00	90°0'-0"	52+17.55	100.00 RT
L214	TYPE 2	P227	52+17.55	16.00 RT	136.98	P22	S66°5'31"E				

KEY NOTES:

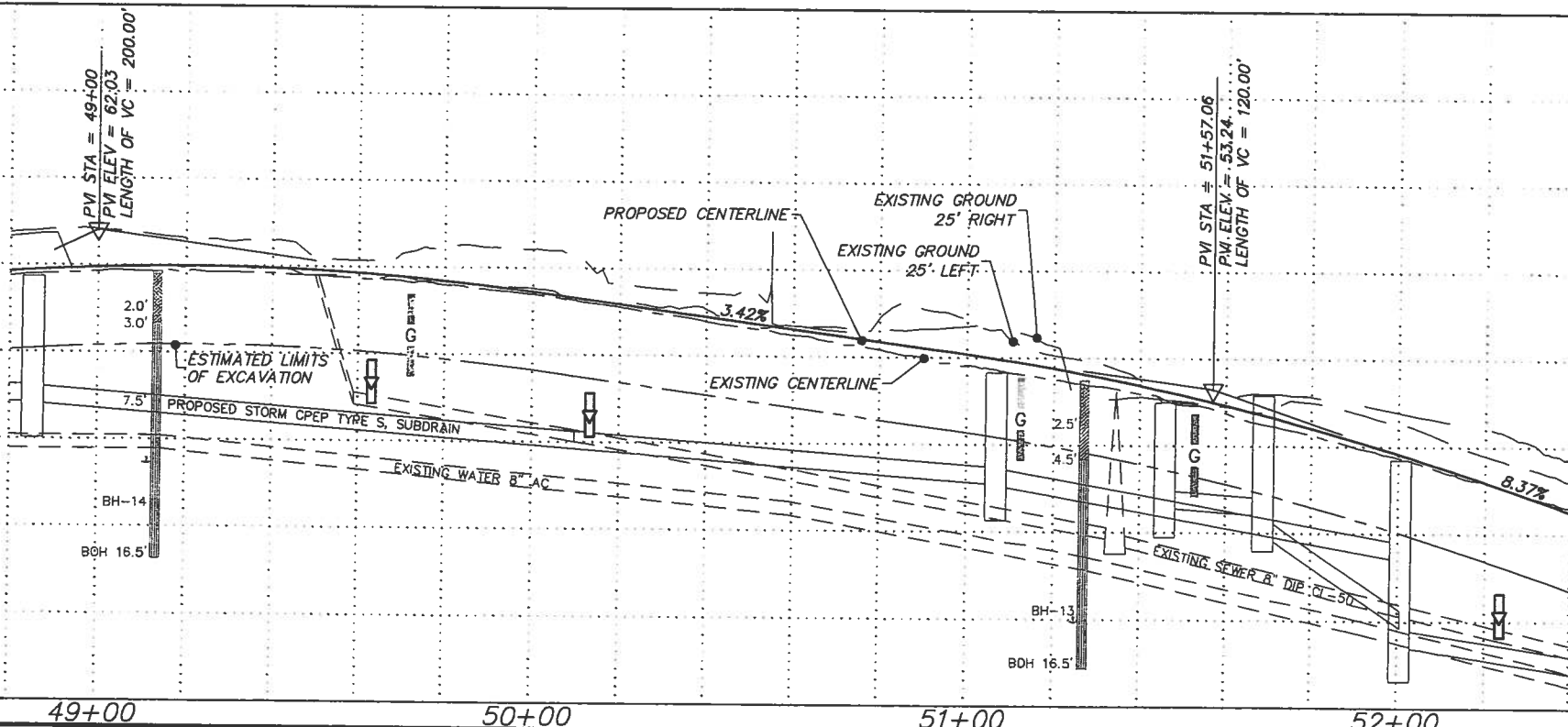
- (A) ADJUST MAINLINE OR FIRE HYDRANT VALVE BOX TO FINISH GRADE
- (B) LOCATE AND ADJUST SERVICE KEY BOX TO FINISH GRADE
- (C) ADJUST MANHOLE RING TO FINISH GRADE
- (D) ADJUST CLEANOUT TO FINISH GRADE



Locate Call Center of Alaska  
Statewide... 800-478-3121  
will notify subscribed utilities only. Other  
utilities need to be contacted individually.

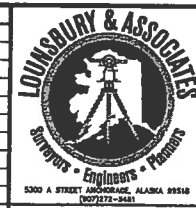


**CAUTION:** EXACT LOCATION, SIZE, NUMBER, AND ELEVATION OF EXISTING UTILITIES MAY NOT BE SHOWN ACCURATELY. MULTIPLE LINES MAY EXIST WHERE ONE UTILITY IS SHOWN. IT IS THE CONTRACTOR'S SOLE RESPONSIBILITY TO VERIFY LOCATION, SIZE, NUMBER, AND ELEVATION OF ALL EXISTING UTILITIES.



PRE-PSE JULY 2010

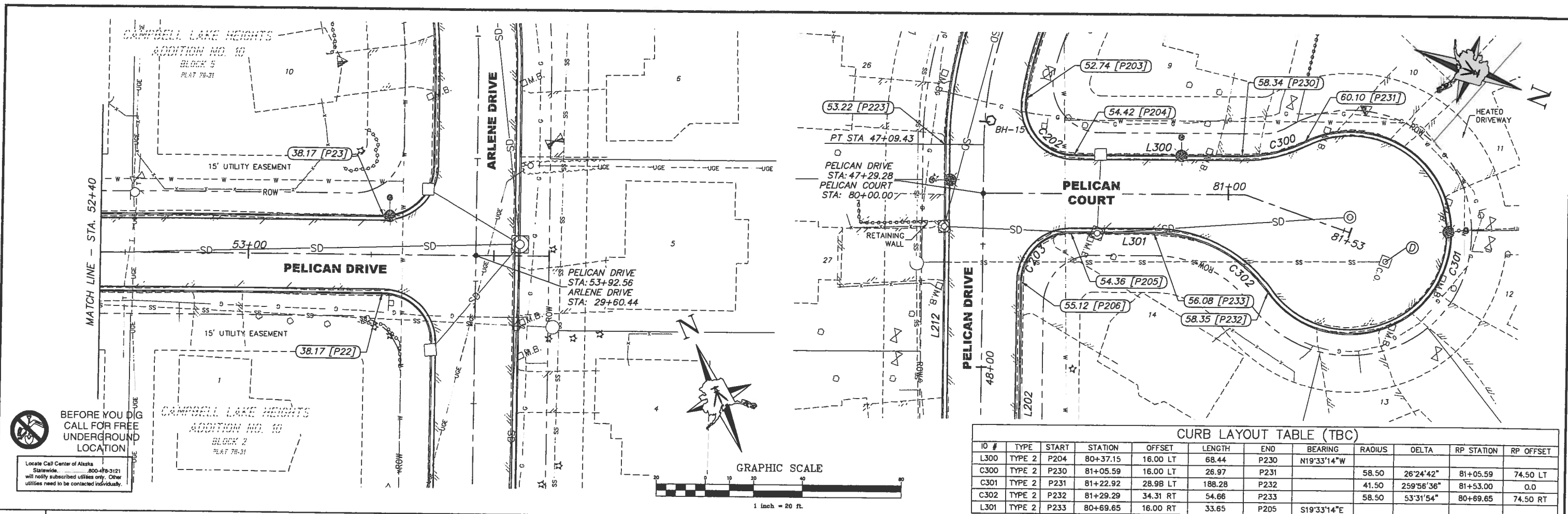
FIELD BOOKS	BM NO.	LOCATION	ELEV.	DATA	DATE	DESCRIPTION	BY	REV	DATE	DESCRIPTION	BY
DESIGN: 3483, 3484 (LOUNSBURY)				BASE		TELEPHONE					
STAKING:				TOPOGRAPHY		ELECTRIC					
ASBUILT:				PROFILE		CABLE TV					
				SANITARY SEWER		DESIGN					
				STORM SEWER		QUANTITIES					
				WATER		MIN. FINAL CHECK					
				GAS							



**PRE-PS&E  
REVIEW  
COPY**

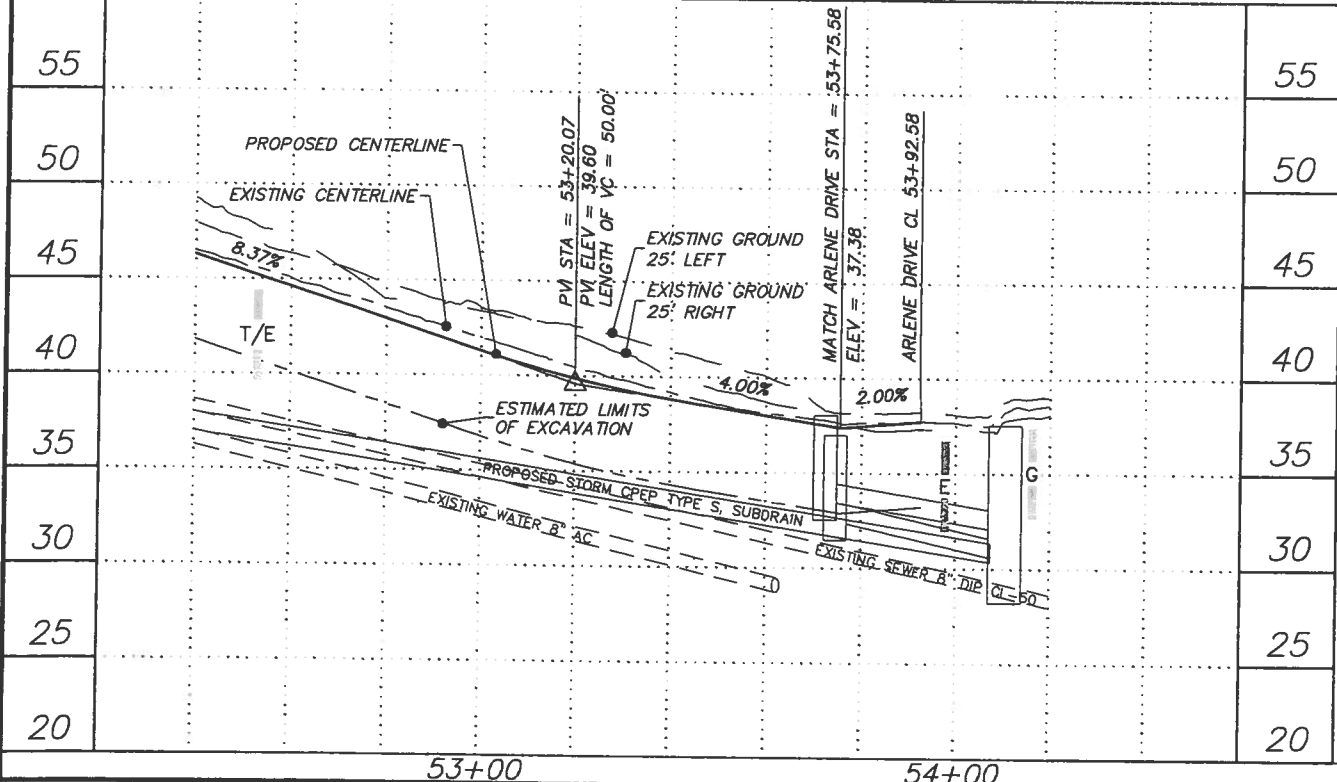


PROJECT MANAGEMENT AND ENGINEERING DEPARTMENT  
PM&E PROJECT NO. 06-019  
ARLENE DRIVE/PELICAN DRIVE/PELICAN COURT/KINGFISHER DRIVE ROAD RECONSTRUCTION RID  
**STREET IMPROVEMENTS - PELICAN DRIVE**  
STA 48+80 TO 52+40  
SCALE: H: 1"=20'  
V: 1"=5'  
DATE: JULY 2010  
GRIDS: 2427  
SHEET ST13 of 54



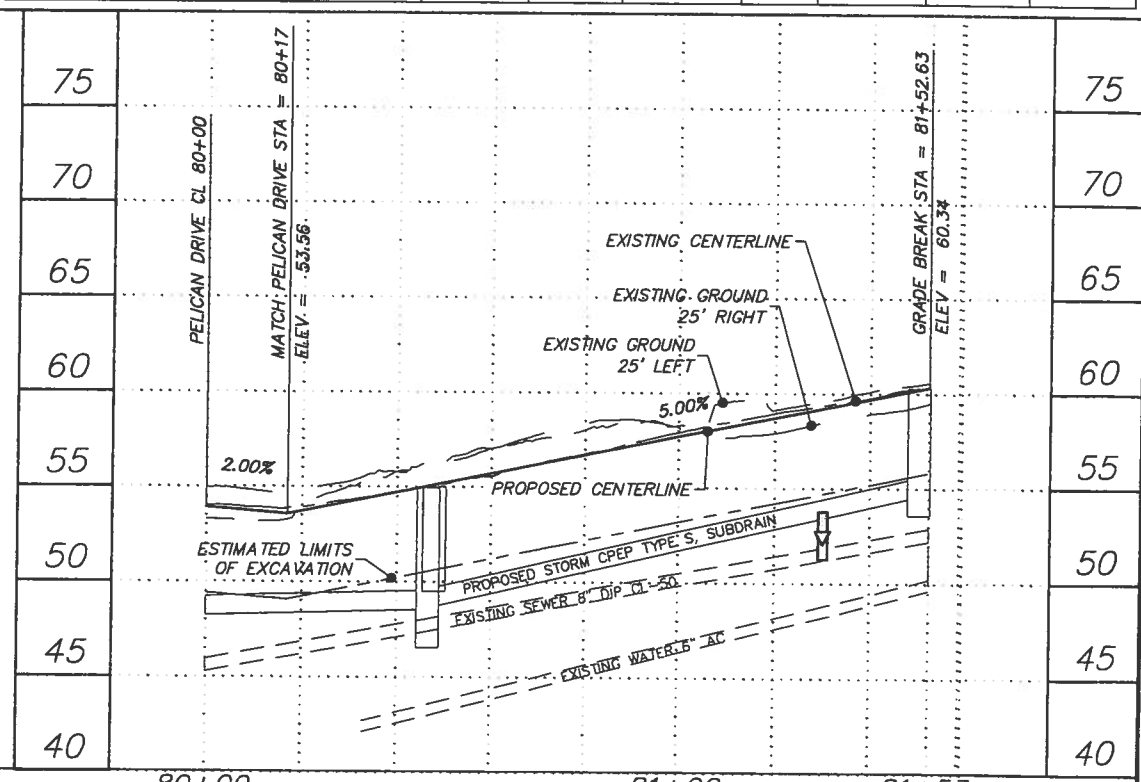
**CURB LAYOUT TABLE (TBC)**

ID #	TYPE	START	STATION	OFFSET	LENGTH	END	BEARING	RADIUS	DELTA	RP STATION	RP OFFSET
L300	TYPE 2	P204	80+37.15	16.00 LT	68.44	P230	N19°33'14"W				
C300	TYPE 2	P230	81+05.59	16.00 LT	26.97	P231		58.50	26°24'42"	81+05.59	74.50 LT
C301	TYPE 2	P231	81+22.92	28.98 LT	188.28	P232		41.50	259°56'36"	81+53.00	0.0
C302	TYPE 2	P232	81+29.29	34.31 RT	54.66	P233		58.50	53°31'54"	80+69.65	74.50 RT
L301	TYPE 2	P233	80+69.65	16.00 RT	33.65	P205	S19°33'14"E				



- KEY NOTES:**
- Ⓐ ADJUST MAINLINE OR FIRE HYDRANT VALVE BOX TO FINISH GRADE
  - Ⓑ LOCATE AND ADJUST SERVICE KEY BOX TO FINISH GRADE
  - Ⓒ ADJUST MANHOLE RING TO FINISH GRADE
  - Ⓓ ADJUST CLEANOUT TO FINISH GRADE

**CAUTION:** EXACT LOCATION, SIZE, NUMBER, AND ELEVATION OF EXISTING UTILITIES MAY NOT BE SHOWN ACCURATELY. MULTIPLE LINES MAY EXIST WHERE ONE UTILITY IS SHOWN. IT IS THE CONTRACTOR'S SOLE RESPONSIBILITY TO VERIFY LOCATION, SIZE, NUMBER, AND ELEVATION OF ALL EXISTING UTILITIES.



PRE-PSE JULY 2010

FIELD BOOKS	BM NO.	LOCATION	ELEV.	DATA	DRAWN BY	CHECKED BY	DATA	DRAWN BY	CHECKED BY	REV	DATE	DESCRIPTION	BY	REV	DATE	DESCRIPTION	BY	
DESIGN: 3483, 3484 (LOUNSBURY)				BASE TOPOGRAPHY			TELEPHONE											
STAKING:				PROFILE			ELECTRIC											
ASBUILT:				SANITARY SEWER			CABLE TV											
CONTRACTOR:				STORM SEWER			DESIGN											
INSPECTOR:				WATER			QUANTITIES											
				GAS			MUN. FINAL CHECK											

**LOUNSBURY & ASSOCIATES**  
Surveyors • Engineers • Planners

3300 A STREET ANCHORAGE, ALASKA 99518  
(907) 272-3421

CONSULTANT

**PRE-PS&E REVIEW COPY**

SEAL

**PROJECT MANAGEMENT AND ENGINEERING DEPARTMENT**

PM&E PROJECT NO. 06-019

ARLENE DRIVE/PELICAN DRIVE/PELICAN COURT/KINGFISHER DRIVE ROAD RECONSTRUCTION RID

**STREET IMPROVEMENTS - PELICAN DR. & CT.**

PELICAN DR. STA 52+40 TO 54+20, PELICAN CT. STA 79+75 TO 82+00

SCALE: H: 1"=20'  
V: 1"=5'

DATE: JULY 2010  
ACCT. NO. 08-028

CRIDS: 2427

SHEET ST14 of 54