

STATE OF ALASKA

DEPARTMENT OF TRANSPORTATION
AND PUBLIC FACILITIES

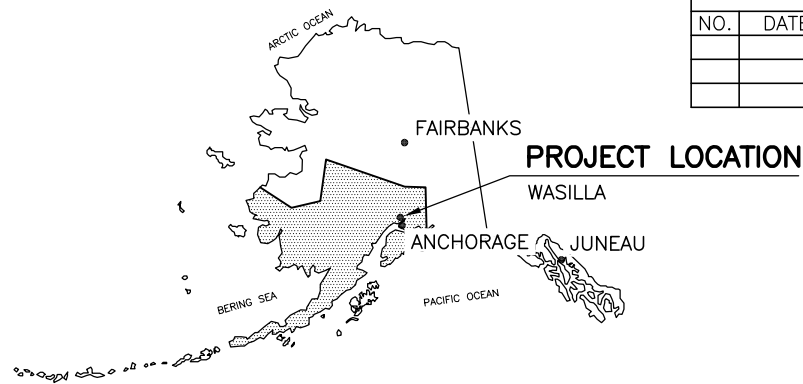
PROPOSED HIGHWAY PROJECT

FAIRVIEW LOOP ROAD

REHABILITATION - 51774

GRADING, DRAINAGE, PAVING, PATHWAY, SIGNING, & STRIPING

REVISIONS			STATE	PROJECT DESIGNATION	YEAR	SHEET NO.	TOTAL SHEETS
NO.	DATE	DESCRIPTION	ALASKA	51774	2010	A1	XX
			CDS ROUTE: 170028		MILEPOINT: 0 TO 10.894		

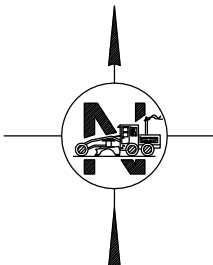
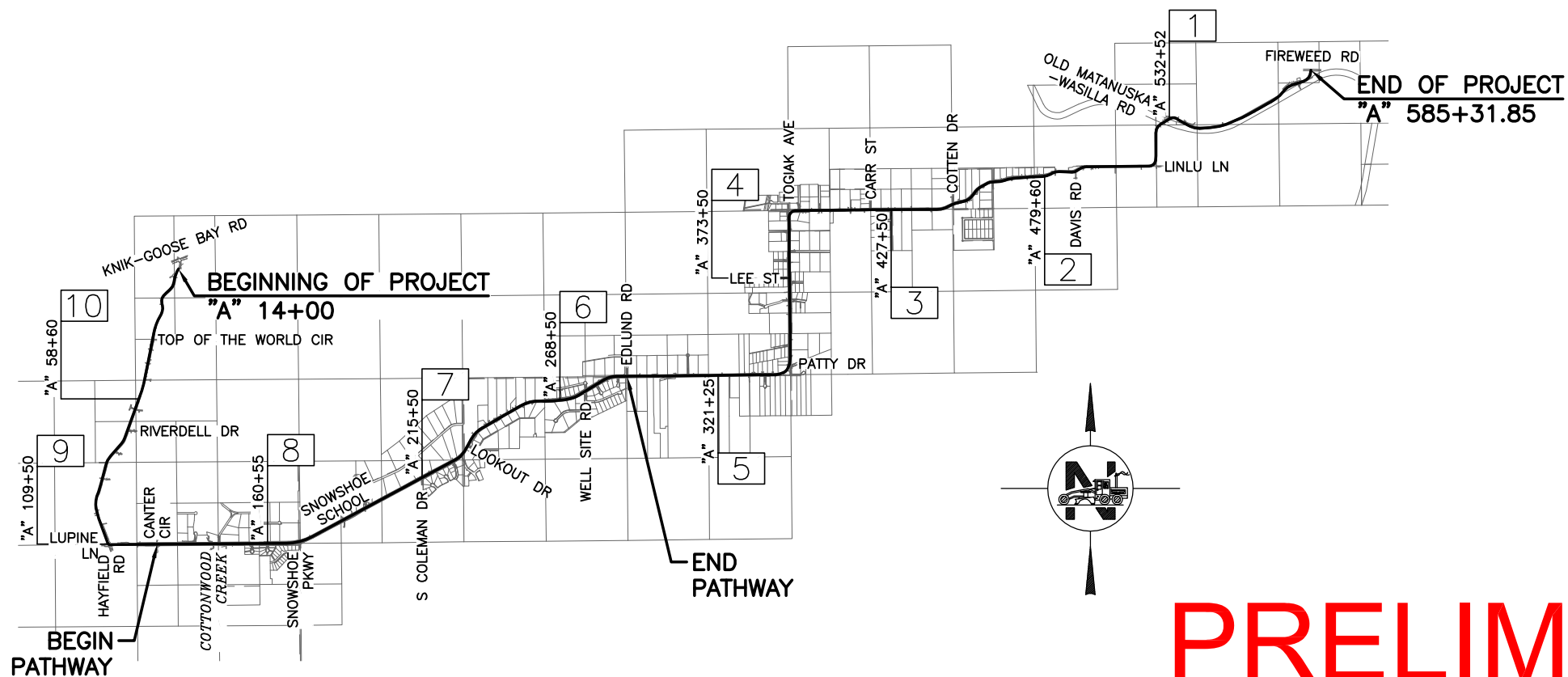


INDEX	
SHEET NO.	DESCRIPTION
A1 TO A3	TITLE, LEGEND, ABBREVIATION, & LAYOUT SHEETS
A4 TO ___	SURVEY CONTROL
B1 TO ___	TYPICAL SECTIONS
C1 TO ___	ESTIMATE OF QUANTITIES
D1 TO ___	SUMMARY SHEETS
E1 TO ___	DETAIL SHEETS
F1 TO ___	PLAN & PROFILE SHEETS
G1 TO ___	DRIVEWAYS, APPROACHES, & GRADING PLANS
H1 TO ___	SIGNING, STRIPING, & SIGN SUMMARY
J1 TO ___	TRAFFIC CONTROL PLANS
P1 TO ___	EROSION & SEDIMENT CONTROL PLANS

THE FOLLOWING DOT STANDARD DRAWINGS APPLY TO THIS PROJECT:

DESIGN DESIGNATION								
ROUTE	FUNCTIONAL CLASSIFICATION	AADT 2009	AADT 20__	DHV	D	T	V	ESAL X 10
FAIRVIEW LOOP ROAD	RURAL MINOR COLLECTOR						50 MPH	

PROJECT SUMMARY		
	WIDTH	LENGTH
FAIRVIEW LOOP ROAD	22 FT	10.84 MI
PATHWAY	10 FT	10.84 MI



PRELIMINARY


STATE OF ALASKA
DEPARTMENT OF TRANSPORTATION
& PUBLIC FACILITIES

PLANS DEVELOPED BY:
R&M CONSULTANTS, INC.

APPROVED: _____ DATE _____
REGIONAL PRE-CONSTRUCTION ENGINEER

CONCUR: _____ DATE _____
DIRECTOR, CONSTRUCTION & OPERATIONS

CERTIFIED TRUE & CORRECT AS-BUILT OF ACTUAL FIELD CONDITION:
CONSTRUCTION PROJECT MANAGER _____ DATE _____



Plotted 10/14/2010 3:06 PM by Ryan Goentzel Z:\project\1635.01 DOT_C Fairview Loop Road Rehabilitation\Engineering\ACAD\1635.01-A01.dwg

Plotted 10/14/2010 3:06 PM by Ryan Goentzel Z:\project\1635.01 DOT_C Fairview Loop Road Rehabilitation\Engineering\ACAD\1635.01-A02.dwg

REVISIONS			STATE	PROJECT DESIGNATION	YEAR	SHEET NO.	TOTAL SHEETS
NO.	DATE	DESCRIPTION	ALASKA	51774	2010	A2	A

	RECOVERED	TO BE SET THIS PROJECT
GOV'T SECTION CORNER		
GOV'T 1/4 SECTION CORNER		
GOV'T 1/16 SECTION CORNER		
GOV'T SURVEY MONUMENT		
GOV'T CONTROL STA.		
PRIMARY MON. [BRASS/AL CAP]		
SECONDARY CORNER		
PRIMARY CENTERLINE MONUMENT		
SECONDARY CENTERLINE MONUMENT		
SURVEY CONTROL POINT		
SECONDARY SURVEY CONT. POINT		
GPS CONTROL POINT		
BENCH MARK		
TEMPORARY BENCH MARK		
ROCK MONUMENT		
INTERNATIONAL BOUNDARY LINE		
TOWNSHIP & RANGE LINE		
SECTION LINE		
1/4 SECTION LINE		
1/16 SECTION LINE		
CORPORATE or CITY LIMITS		
EXISTING RIGHT-OF-WAY		
RIGHT-OF-WAY REQUIRED		
PROJECT RIGHT-OF-WAY LINE		
EXISTING PROPERTY LINE		
CONTROLLED ACCESS LINE		
PERMIT LINE		
EXISTING EASEMENT LINE		
STATION EQUATION		
PROJECT CENTERLINE		
EXISTING CENTERLINE		
RAILROAD CENTERLINE		
HIGHWAY MILEPOST		
RAILROAD MILEPOST		

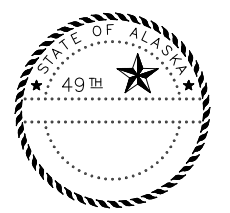
ROADWAY OBLITERATION	
LIMIT OF CUT SLOPE	
LIMIT OF FILL SLOPE	
PROPOSED ROADWAY	
EXISTING ROADWAY	
NOISE BARRIER	
FENCE	
STONE FENCE	
HEAD & WINGWALLS	
GUARD RAIL EXISTING	
PROPOSED	
RETAINING WALL	
TUNNEL	
INTERMITTENT DRAINAGE	
INTERCEPTOR DITCH	
MARSHLAND	
CREEK	
RIVER	
LAKE	
RESERVOIR	
CHANNEL CHANGE	
PLANTER	
VENT	
TANK VENT	
WELL	
SEPTIC	
TANKS ABOVE GROUND	
BELOW GROUND	
SATELLITE DISH	
PRIVATE SIGN	
GAS PUMP	
POST	
BOULDER OR BOULDERS	
LANDSCAPE LIGHT	
DECIDUOUS TREE	
CONIFER TREE	
SHRUB OR SHRUBS	

	EXISTING	PROPOSED
PIPELINES:		
SANITARY SEWER		
OIL		
GAS		
WATER		
STORM DRAIN		
SIDEWALK		
CONCRETE CURB		
CONCRETE CURB & GUTTER		
DRIVEWAY/APPROACH		
BRIDGE		
RIPRAP		
TELEPHONE (OVERHEAD)		
(DIRECT BURY)		
ELECTRIC (OVERHEAD)		
(DIRECT BURY)		
FIBER OPTIC		
U.G. CABLE		
U.G. DUCT		
TELEPHONE MANHOLE		
ELECTRIC MANHOLE		
FOUNDATION		
BUILDING		
MANHOLE		
FIRE HYDRANT		
METER		
VALVE		
PIPE CULVERT W/ END SECT.		
UTILITY POLE		
ELECTROLIER		
UTILITY POLE WITH LUMINAIRE		
POLE ANCHOR W/ GUY		
TRANSMISSION TOWER [WOOD]		
TRANSMISSION TOWER [STEEL]		
ELECTRICAL OUTLET		

	EXISTING	PROPOSED
ELECTRICAL PEDESTAL		
TELEPHONE PEDESTAL		
CABLE T.V. PEDESTAL		
MAILBOX		
SIGN (FACING →)		
DELINEATOR		
GUIDE MARKER (FACING →)		
SIGNAL FACE, VEHICULAR		
SIGNAL FACE, BACKPLATE		
SIGNAL FACE, LEFT TURN, BACKPLATE		
SIGNAL FACE, PEDESTRIAN		
JUNCTION BOX, TYPE I		
JUNCTION BOX, TYPE II		
JUNCTION BOX, TYPE III		
DETECTOR, LOOP		
DETECTOR, MAGNETOMETER		
DETECTOR, RADAR		
DETECTOR, SONIC		
DETECTOR, OPTICOM		
DETECTOR, PUSH BUTTON (DIRECTION →)		
SIGNAL CONTROLLER		
LOAD CENTER		
SIGNAL POLE		
SIGNAL POLE W/MASTARM		
SOLID WHITE STRIPE		
SOLID YELLOW STRIPE		
BROKEN WHITE OR YELLOW STRIPE		
DASH YELLOW STRIPE		
SOLID YELLOW STRIPE WITH BROKEN YELLOW STRIPE		

FOR STRIPING PLANS

PRELIMINARY



R&M CONSULTANTS, INC.

STATE OF ALASKA
DEPARTMENT OF TRANSPORTATION
AND
PUBLIC FACILITIES
**FAIRVIEW LOOP ROAD
REHABILITATION**

LEGEND SHEET