



# SOUTH TRUNK ROAD EXTENSION

## Matanuska-Susitna Borough PROJECT FACTS

### Project Scope

This project will design and determine right-of-way requirements for the extension of Trunk Road south from the Parks Highway to Nelson Road and for providing a new connection and intersection with Fairview Loop Road, located in the Matanuska-Susitna Borough (MSB). This is a critical connection needed to address increased development and growth south of the Parks Highway, to improve safety and reduce congestion. The project will provide construction cost estimates and will look at a public private partnership for the construction of improvements.

The project purpose and need is to respond to a growing community by providing improved access to the area south of the Parks Highway and east of Fairview Loop as well as to develop an integrated roadway network that respects individual neighborhoods, minimizes through-traffic, and facilitates efficient movement of pedestrians and vehicles.

The existing funding is being used to provide professional services for preliminary engineering, environmental analysis, permitting, final design development and right-of-way mapping for the subject project. Activities include, but are not limited to, environmental studies and permitting; public involvement; survey for design and right of way; geotechnical investigations; hydraulic design; traffic and safety analysis; design studies; right of way mapping; utility studies and agreements; preparation of plans; specifications & estimates; and design reviews.

### Benefits

- Improved safety and reduced congestion in a critical area of growth and development.
- Provide alternative access to several existing and proposed residential developments south of the Parks Highway.
- Provide alternative access to the new Elementary School.

### Status

- Alignment alternatives have been developed for the east side at Trunk Road and the west side at Fairview.
- Public meetings were held January 2009 and May 2009.
- Field surveys have been performed to gather topographic data for the road alignments.
- Decision making steps are underway. The project has been considered by the Transportation Advisory Board and the Planning Commission. The next step will be the MSB Assembly.

In general, public comment and the TAB concur with staff recommendations for the eastern alignment. The TAB recommended the Nelson Road East At-Grade alignment on the west. The Planning Commission took no action.

Staff recommends the Nelson Road Extension on the east.

### Project Cost

Grant Funds Available: \$750,000

Contract Amount to Lounsbury: \$525,000

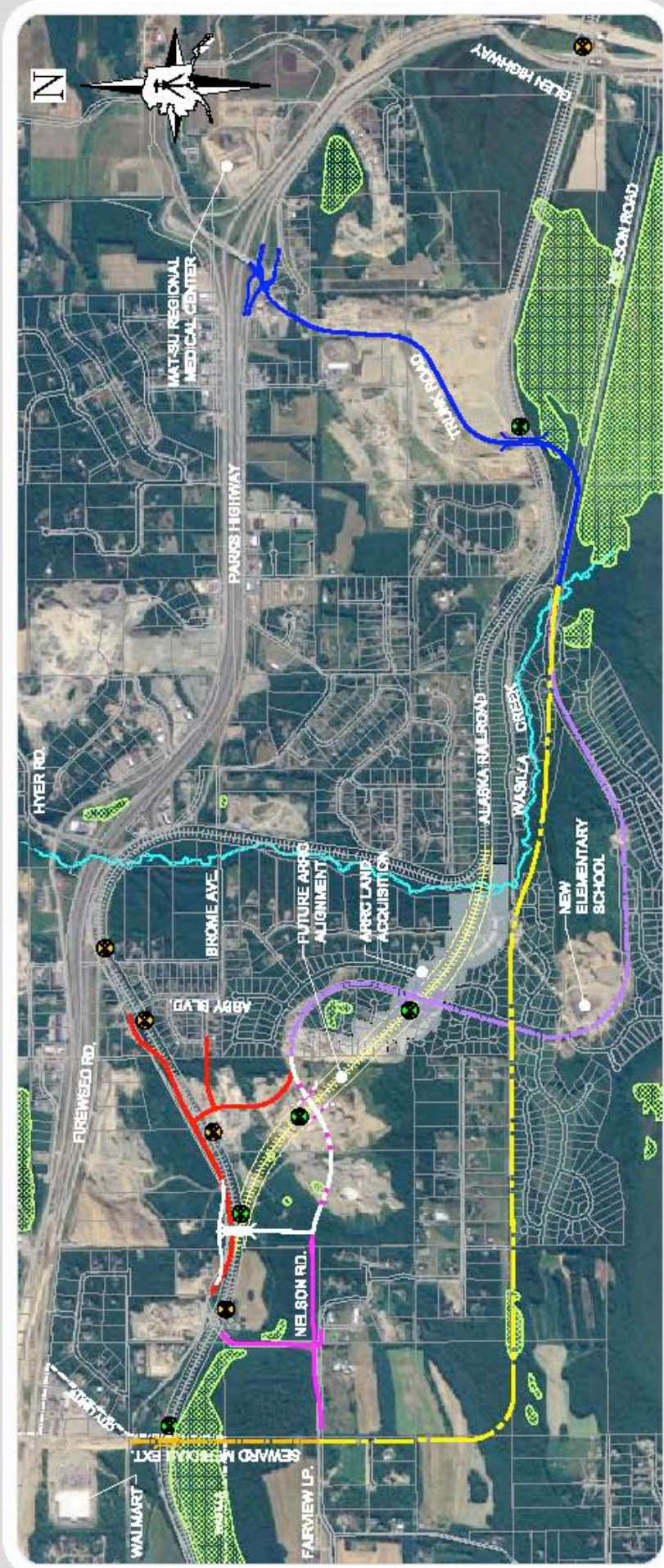
Funding is from a grant for the project from the Department of Commerce Community and Economic Development. The funds were accepted and appropriated by the Borough Assembly on August 1, 2006.

### Contact Information

For more information, visit our website at [www.matsugov.us](http://www.matsugov.us), the project website at: <http://www.brooks-alaska.com/trunkroadsouth/>. Contact the Project Manager, Jim Rowland at 745-9811, 350 E. Dahlia Avenue, Palmer, AK 99645 or e-mail at [jrowland@matsugov.us](mailto:jrowland@matsugov.us). Or contact Brad Sworts, Transportation and Environmental Manager, at (907) 746-7430 or email at [bsworts@matsugov.us](mailto:bsworts@matsugov.us).

# Proposed Southern Extension of Trunk Road

# Alignment Alternatives



## Legend

- EXISTING RAILROAD CROSSING
- PROPOSED RAILROAD CROSSING
- GRADE SEPARATED CROSSING
- POTENTIAL WETLANDS

## Alignments

- NELSON ROAD EAST
- NELSON ROAD EXTENSION
- TUCKER
- SEWARD MERIDIAN (SECTION LINE)

## Alignments (continued)

- TRUNK ROAD, 4-WAY INTERSECTION OR ROUNDABOUT
- NELSON ROAD, BY RANCH SUBMISSION DEVELOPER
- SEWARD MERIDIAN EXTENSION, BY MBSTATE BOND